

HPREC NEWS



KEYSIGHT
TECHNOLOGIES

Agilent Technologies

Fun, friendship, service, memories for members of the Bay Area Hewlett-Packard Retired Employees Club, Inc.

MARCH 2015



Issue: #99

HPREC President's Message *By Bernard Bruand*

Already March and moving toward spring, I don't know if, like me, you didn't see the winter passing. Not much skiing this year, only two storms which were not enough to reduce California's drought issue, so we will need to continue saving water. But that should not stop us to enjoy spring with key events.

Spring Fling: Don't forget to attend the Spring Fling on March 16 if this newsletter reaches you before then; register ASAP. You can register and pay online or by mail. Hoping to see a lot of you at this event where we will have a guest speaker from HP Labs to explain their new computing strategy with "The Machine."

Picnic: We are actively looking for volunteers to help organize and assist with this event. Please let me or Elizabeth Shen know if you can help as the more people in the team the lighter the load for everyone. See the flyer in this issue.

Golf: The Golf activities resume in March and there are places for golfers of all abilities. Contact Phil Smith if interested. Look in the newsletter for all detailed information and registration for these events.

If you got my email broadcast of early Feb., you know we ran into some delays with the January newsletter and will have some delay in the distribution of the HPREC 2015 Member directory (see below).

Newsletter: We have identified the causes of the delay for the January newsletter, part due to a new "temporary editor" and delays in FedEx and the USPS delivery. We think we have solutions for most of the process issues.

However, I want to remind everyone that we can't expect to have the mailed copy arrive at the time as we post it on HPREC website. We will always post on the website as soon as available, and we expect 10 to 15 days delay for the mailed copy to arrive. This was a decision made by the Board last year.

We encourage everyone to subscribe to the electronic notification, to know immediately when the newsletter is posted. For this we need to have your email address. You can change your profile online on the HPREC web page under

Join-Renew-Update [Member Info Updates](#). See Carol's Corner for more information on this.

You can also opt out of receiving a paper copy, which can save quite some money for the Club.

We are also looking for new permanent editor. Please come forward if you think you can contribute to a key activity of the Club, as many members only connect with the Club through the newsletter.

2015 Member Directory: We were almost ready early February; however, we were waiting on HP to make changes to their retiree websites, and we preferred to have the correct HP/Agilent/Keysight CONTACT and CHANGE OF ADDRESS information in the directory, since it is printed once a year. HP completed their work February 28, and we plan to have the completed directory to the printer by the second week of March. In the meantime, please keep your current copy of the directory.

Feel free to contact me with any comments, suggestions, or offers to help at ba.president@hpretirees.org.



HPREC NEWS

March 2015

Editorial Staff:

John McGowan
Carol Nakamoto
Betsy Riccomini
Marialis Seehorn

To submit articles or
contact the Editor, email:
HPREC_News@yahoo.com

Contents of This Issue

Page 1 ...President's Message	Page 12 ...Harley Farms Goat Dairy flyer
Page 2 ...Welcome Aboard! Membership Report	Page 13 ...HP Garage flyer
Page 3 ...Help Wanted: HPREC & Delta Dental Update	Page 14 ...HPREC Golf flyer
Page 4 ...Help with Cleanup & HP Memory Project	Page 15 ...SF Symphony Open Rehearsal flyer
Page 5 ...Travel Talk & Help w/Picnic	Page 16 ...Canepa Motorsports flyer
Page 6 ...HP & First Tech Updates	Page 17 ...HPREC Picnic flyer
Page 7 ...Carol's Corner	Page 18 ...Almaden Qs Mining Museum flyer
Page 9 ...Upcoming--One-page Reference	Page 19 ...Iceland Tour flyer
Page 10 ...HPARV Volunteer flyer	Page 20 ...Monthly Activities
Page 11 ...Spring Fling flyer	Page 21 ...Hiking Schedule
	Page 23 ...HPARV Volunteer News
	Page 24 ...Hiking News
	Page 26 ...Sympathy

To view newsletters online (in color!) visit www.hpretirees.org/hprec

HPREC, P.O. Box 86, Mountain View, CA 94042-0086

Welcome Aboard! *By John Weidert, Membership Chair*



I would like to extend a warm welcome to the following **NEW** members who have joined our Club during December 2014 and January 2015: **Karlie Arkin, Berry Walton, Fay Harmon, Danier (Dan) W. Burke, and Maureen Anne (Maureen) Cornelia.** *Welcome aboard and thank you for joining HPREC!*

Membership Report *By John Weidert, Membership Chair*

We have just now completed our first quarter of fiscal 2015 operations. I mentioned last month about our effort to get everyone signed up with their email address for emailing our notification that the bi-monthly HPREC newsletter (in color) has been posted on our Club's website and for opting NOT to receive a paper newsletter mailed to your home. Please consider doing this as it helps us to better manage the expense of mailing and printing so many newsletters.

Later on this year, I will remind everyone of our new online renewal process so that you can take advantage of this method of renewing your membership with HPREC this coming fall. I know we are several months away from this process, but I think it is helpful to keep this in mind so that you can take advantage of this later on this year.

Our Bay Area HPREC Club is continuing its campaign to increase membership, and we need your help!

Please keep up your efforts to remind your friends of the opportunity to join HPREC. None of the companies provide the Club with retiring employee's names for privacy reasons, so we rely mostly on word-of-mouth. The benefits are many, and the cost is very low. Remember, eligibility to join requires only a minimum of 10 years with HP and/or Agilent/Keysight, and members can live anywhere. I will repeat what I have mentioned in our January HPREC newsletter:

To help all of us in our recruiting efforts, utilize our **INFORMATIVE BROCHURE** highlighting the key activities and benefits that come with being a member of HPREC. This brochure is available on the www.hpretirees.org/hprec website. Click *HPREC Brochure* under **JOIN, RENEW, UPDATE** to access the tri-fold brochure. Please print out some copies and give them to your HP, Agilent or Keysight retiree friends. Or, if you would like hardcopies sent to you, send an email to our HPREC Membership Chair, **John Weidert** at bamembership@hpretirees.org.



Membership Report (continued)



Members! You can win a Gift Certificate!

To encourage participation, HPREC offers **TWO \$50.00 GIFT CERTIFICATES** to be awarded at the HPREC Holiday Luncheon in December 2015. Here's how you can qualify for the drawing. Each person you encourage to join HPREC (with dues paid) will put your name in the drawing pool. Bring in more than one member, and you will have your name added to the pool an additional time. Bring in three new paid members and get three chances to win. There is no limit to how many paid members you can bring in and increase your chance of winning a certificate (only one winning certificate per member).

All entries from November 1, 2014 through October 31, 2015 (end of our fiscal year) are eligible. New members should write your name on their enrollment form for you to qualify (either online or mail-in form). (If you have already referred new members who have joined and paid this year, just let John Weidert know.) All members of the Club are eligible to win (except the membership chair). If you have questions or comments, please send an email to John Weidert:

bamembership@hpretirees.org.

So, let's go out and talk to our friends and increase our membership level! You will be doing the new member and the Club a real favor.



Help Wanted! Opportunities Available Within HPREC

Newsletter Editor/Coordinator - for the Club's bi-monthly newsletter (published in the odd months). The newsletter team has been together for several years and works very well together. If you have solid MS Word and reasonable writing skills, and like to work collaboratively in a team environment, then contact Paula Hoelker-williams at phoelkerwilliams@yahoo.com to learn more.

Golf Chair/Program Manager - plan, organize and handle administration for the HPREC monthly golf outings (low-key "tournaments" from March through October). This is Phil Smith's last year as the chair. Learn the ropes during 2015 and take it on as of 2016. If you want to know more, contact Phil at smithphil06@gmail.com. Someone needs to step up in order to keep this program going as a fun element of HPREC past 2015.

Sympathy/Obituary Program Manager – use software tools to search for notices of HPREC members and retirees passing, and share the information through our newsletter, and manage the honorarium donations funded by the Club. If you want to know more, contact Bernard Bruand at ba.president@hpretirees.org.

Delta Dental Update *By Elizabeth Shen*

There is a new Delta Dental link where enrollees can login and get information about their plan, including premiums and claims information: deltadentalins.com The website contains a lot of useful information.

Help us with a “How-to Manual” on the Disposition of the Contents of a Home and Collectables *By John Minck*

At our age, many of us have faced the job of helping our parents downsize their home to move to senior housing... or after their death. In the last year, I've tried to help the children of several HP friends, struggling with what to do with hobby collections, a garage full of power tools, shelves of books and a gazillion HP binders. It is pretty overwhelming.

So I am proposing that we need an Instruction Manual on who to call. I am asking any of you readers to tell us how you were successful in finding good homes for STUFF. What will Goodwill or St. Vincent DePaul accept? What will local schools accept? Books? Stationary supplies? Computers? Most of us don't have time or expertise to use eBay, but have you found reliable brokers who will take your stuff and sell it on eBay for a percentage? How about a power mower or a pottery wheel? For example, Palo Alto sponsors a monthly turn-in for paint, any amount, and remixes it to paint over graffiti. We don't just want to call Got-Junk and have them carry it all to the dump.

Here is the plan. I am volunteering to compile inputs from any of you who have survived with successful disposition processes. Send your material to JLMinck1222(at)att.net, and I will pull it together. HPREC will then publish it as a downloadable file. I suggest that you provide actual organizations with names, and will for now restrict it to the Bay Area. I am sure that all your children and my poor daughter who gets to clean up after me will breathe a sigh of relief. Let's put a timeline on the project. Get your inputs to me within the next month. Depending on the response, I will try to finish the draft in another month.

New HPMemoryProject.org Website Preserves Marc Mislanghe Legacy *By John Minck*

With the stunning news that Curator Marc Mislanghe died in July, 2014, Marc's son Franck and several Keysight engineers in France have worked with Ken Kuhn in Alabama to preserve the web content of his life work. We are launching a new website named, "HPMemoryProject.org," www.hpmemoryproject.org. We have transferred the entire content to the new URL, in part to reduce search confusion with people googling HP Memory, looking to find HP computer memory products. Further, this new URL was Marc's own home page title.

Ken is a devoted Hewlett-Packard history aficionado. Although he never worked for HP, he has his own website, and a basement full of some 400 vintage HP instruments and computers. He and Marc became friends after bidding against each other on EBay. Ken and I are working to create a home page story of Marc's life legacy, with a blog for tributes by anyone who remembers him. We will also continue to expand the personal memoirs and other HP writings as you submit them.

I would also use this opportunity to encourage every one of you HPREC readers to promise yourself that you will write your own HP life story, long or short. We welcome your unique HP experiences of that wonderful work culture. Furthermore, my nagging will assure that you preserve your life history for your friends and children. I will offer to help you edit your drafts. I like to read about not just what you did and where you went, but also your causes and passions and heroes. I can promise you that your children will appreciate your efforts.

Travel Talk *By Pat Fausett*

Your **Travel Committee** politely requests that you fully and carefully read the travel and event fliers that are published in this newsletter, as we are getting many questions that can easily be answered if the information is fully read.



A few things to remember:

1. We do NOT send out confirmations for events, as your cancelled check should indicate that your reservation has been accepted. A few weeks before the actual date of the event, the team leader will contact you via email with final instructions regarding the trip. An exception to this is that, if you are on a Wait List, you will be notified right after we receive your request.
2. PLEASE PRINT CLEARLY your email address! We have to spend time calling people because we cannot read their writing. If you find the space too small for your handwriting, attach a separate piece of paper to the reservation with your clearly printed email address. Remember, we are retirees, and our eyesight is demanding larger print!
3. Please remember the contact hours for any HPREC trip activity. Our team does not work on weekends, so any emails you may send during a weekend will not get a response until that following Monday.
4. **NOTE:** Real emergencies are always an exception! Trip Leaders are always available for these kinds of situations... Make sure you contact both leaders, so that we are sure to get your emergency situation resolved as soon as possible. Just let us know that both leaders (names on the flyer) have been copied or contacted.
5. We have been struggling to fill up our trips, so your committee has decided that a member can bring more than one guest to an event. HOWEVER, please check with the leaders to make sure we can accommodate more than one guest, as HPREC members do get first dibs at open reservations.

Want to Help Plan an AWESOME Picnic? *By Elizabeth Shen, Picnic Co-chair*

- ✓ Do you have ideas to make the annual HPREC Picnic on **Saturday, June 6** an even better event than it has **ever** been? (*What will it take to get to the next level?*)
- ✓ Do you want to help create a **warm, inclusive and fun experience** for fellow HP retirees? (*Lots of tasks need helping hands for that to happen.*)
- ✓ Are you itching to **apply your finely honed skills** to a project with specific objectives, clear timeline and immediate feedback? (*Have you noticed that many HP folks tend to be vocal about what they think?*)



We are calling for **volunteers** to help plan this year's HPREC Picnic... depending on what you want to help with, it'll probably take several hours of your time before the picnic, which is scheduled for Saturday, June 6, 2015 at Cuesta Park in Mountain View.

We can use help with Planning, Set Up, Salad/Food serving, Bingo calling, Clean Up.

If you are interested, please contact me at ba.picnic@hpretirees.org or 408-318-8064, or contact the other Picnic Co-chair, Pat Capshaw at ba.picnic@hpretirees.org or 408-255-6385. Or, **sign up for the Picnic online at www.hpretirees.org** (click on **Calendar of Events**) or by filling out the **flyer** in this issue. You can indicate your interest in volunteering, and one of us will contact you. It's a fun project to work on.

HP Message on Anthem Security Breach

Those of you who are signed up to receive periodic emails from a member of your Club's Board were sent an email from me on February 7 regarding the security breach at Anthem of interest to those covered by Anthem. HP asked me to pass it along. If you'd like to receive these types of messages, please provide HPREC with your email address. See Carol's Corner, **Basics** section, for the "how to".

Snapfish Center at HP – Palo Alto (formerly Digital Oasis Center)



HP has approved a process whereby HP retirees can access the Snapfish Center at Bldg. 20 in Palo Alto. The process to follow was documented in November's HPREC News issue.

A refresher: Snapfish is owned by HP and provides discounted products (photos, calendars, mugs, mouse pads, posters, and more) to HP retirees. These are available online at www.snapfish.com at a discounted price. Some products, primarily photos, can be printed at the Center in Palo Alto for free.

First Tech Update *Submitted by Carol Nakamoto*

Here are the next two monthly webinars hosted by First Tech Federal Credit Union. Registration link is always the same and it's **free**.

March 25 at Noon Pacific Tame the Crazy World of Credit: Understand and take charge of your score

In today's fast-paced, digital world, your overall credit worthiness and credit score can affect your ability to buy a home, get a job or save money on car insurance. Learn how to manage your credit to improve your score and financial life.

April 23 at Noon Pacific Match Your Homeowner Wants and Needs: The often-overlooked realities of home ownership

Whether you're looking to buy a new home or refinance the one you have, there are some hidden homeowner expenses to consider. Those include the cost of financing, maintenance, taxes and homeowner association fees. Learn what to expect and how to save money during your home ownership adventure.

Go to www.firsttechfed.com/financialwebinar and register (early or just before event):

1. Click "register" link on top left-hand side, next to Event status.
2. Complete registration form and submit.
3. Receive a detailed email with event instructions, including Webex link to attend.
4. Mark your calendar with date and time, and SAVE the email.
5. 10 minutes prior to the seminar start time, open the invitation email and click "Click Here" link to attend.

Any questions? Refer to the credit union's website above, and correspondence from them if you are a member.

LATEST – Updates, new info from last newsletter.

www.hpretirees.org/hprec - **HPREC** (Our Club's website, maintained by HPREC volunteers)

To attend the 2015 HPREC Picnic in June, you now have one more way to register (besides usual mail/check):

PICNIC: To SIGN UP and PAY ONLINE, go to our Club's website (above),

1. click on **CALENDAR OF EVENTS** (*formerly Coming Events*)
2. scroll to **Picnic** (June 6)
3. click on **Sign Up and Pay Online** and complete the form

Also, check out the **new CALENDAR OF EVENTS** page. It is more flexible, informative, has a color-coordinated calendar with a full scrolling capability of the list of fun activities, picnic and volunteer opportunities.

www.hp.com/retiree - (Maintained by HP for retirees)

At the time of this newsletter deadline, HP was still working on updating their retiree website with HP, Agilent and Keysight contact information. Normally, it is refreshed by the first week of every January, but they hit a snag in getting it updated in a timely manner...they apologize for the delay. By the time you read this, their work should be completed... and we'll be finishing our work on the annual HPREC Member Directory, targeted to arrive at your homes in March.

www.bayarea.hpway.org - **Bay Area Employee Programs** (Maintained by HP affiliated volunteers, passing along discounted offerings to retirees made available to HP employees; *see password section for online access*)

Here are time-sensitive ONLINE Theater offerings:

- **SHN Orpheum Theater**
 - *Dame Edna's Glorious Goodbye* (March 17-22)
 - *Matilda* (July 15-Aug 15)
 - *Phantom of the Opera* (Aug 19-Oct 4)
- **Broadway San Jose**
 - *Rain: A Tribute to the Beatles* (March 27 & 29)
 - *Once* (April 22 & 26)
 - *The Illusionists* (June 10 & 14)
- **SAP Center**
 - *Stars on Ice* (April 5 @ 4pm)



Online, anytime: Marine World, Roaring Camp, Universal Studios, and Winchester Mystery House tickets

Here are offerings available for pick up at the HP Employee Store:

Palo Alto HQ, in Lobby 20D, no special access or appointment needed. Store hours: Wed-Fri 11:30-1:30 except HP holidays. Phone: 650-235-0525, answered when volunteers are present.

- Disneyland, Great America, AMC/Cinemark movie passes, Pier 39, Roaring Camp Railroad, California Academy of Sciences, Gilroy Gardens, LegoLand, Sea World, and more.

Pictured are HP Employee Store retiree volunteers at a luncheon recognizing Marilyn Reiley's long-time service of volunteering at the Store. **Thanks, Marilyn!** Marilyn, Fran Low, and John Jenke were the original volunteers at the HP Store.

Standing: Carol Arnett, RoseMary Brodbeck, Margaret Fletcher

Seated: Pat Capshaw, Marilyn Reiley, Fran Low

Not pictured: Tom Blanchard



Basics - As a reminder, Passwords are not shown in the online newsletter for security reasons.

They are in:

- Member Directory
- Paper version of the newsletter
- Bi-monthly email from me notifying you that the newsletter has been posted online
(see * in Email Newsletter Notice section below to sign up, select **second** button - "Be notified via an email...")
- Welcome Packet when you first joined the Club

Passwords: (For Online Newsletters, Passwords are Omitted.. Refer to Member Directory)

Program	URL	Username	Password
HP (News, Benefits and Stay Connected)	www.hp.com/retiree		
Bay Area Employee Programs (Discounts)	www.bayarea.hpway.org		
HP Branded Merchandise	www.hpstore.com		
Passport Unlimited (dining discounts)	www.bayarea.hpway.org		
Online HPREC <u>Member Info Updates</u> form (<i>new</i>) (Note: password is case sensitive, includes a hyphen, and numbers refer to the year HP was founded)	www.hpretirees.org/hprec/		

*Email Newsletter Notice, Paper Newsletter or Both? Need to update our records?

Want to **stop** having the paper newsletter mailed to your home and read the **color** version online? Want to receive an email from me letting you know when the newsletter is posted online? Go to www.hpretirees.org/hprec, click on "Member Info Updates", (u/n and p/w above) select **Email/Newsletter Notification Preferences**, fill in your email address and select your preferred communication option(s). **Updates to personal information can be done anytime.**

www.hp.com/retiree (Maintained by HP)

HP's site for all information provided to retirees: benefits/company and vendor contact info, retiree clubs, vendor. discounts, HP news and much more. Also, HP Continuum is listed under "Stay Connected" tab on this site's home page

www.hp.alumniprogram.com/continuum/home - **HP Continuum** (Maintained by HP)

Remember to keep checking the HP Continuum website for news, discounts, benefit updates, retiree profiles, and more. Set up a password, log in, and check it periodically. *Some overlapping material with above site.*

www.hp alumni.org - **HP Alumni Association** (Maintained by volunteer HP retirees/former employees)

Free to join. There's LOTS of helpful information (historical stock prices, legacy company listings, topic chats/Q&A, etc). Many former employees find this an invaluable resource when they need information or advice.

Contact **Carol Nakamoto** at CarolsCorner@hpretirees.org or call me (phone number in directory) if you need help.

Upcoming Activities, Events, Trips and Volunteer Opportunities

This table combines information about all the Club's social gatherings into an easy-to-use table that is sorted by date. Scan this list, check off the ones you want to attend, and be sure to add them to your calendar.

Events that are not free of charge have a \$ in the "Type" column. All others are free, or at least potentially free if you don't participate in the carpool.

Type	Date and Time	Description and Location	Sign Up Deadline
Luncheon \$	Mar. 16, 11 am – 2 pm	Spring Fling, Mariani's Inn and Restaurant, Santa Clara	\$30 by Mar. 4, \$35 after * or see Page 11
Hike	Mar. 18, 10 – 12:30 am	Rancho San Antonio Deer Hollow Farm	Just come! *
Trip \$	Mar. 19, 9:30 am – 4 pm	Harley Farms Goat Dairy; depart from Vallco Shopping Mall, Cupertino	Not specified * or see Page 12
Golf \$	Mar. 19, 10 am – 4 pm	Sunnyvale Golf Course	Mar. 14, *
Help	Mar. 24, 9:30 am – 12:30 pm	La Comida Dining Room, Palo Alto	Mar. 17, *
Bowl \$	Apr. 13, 11 am – 12:30 pm	Homestead Lanes, Cupertino	Just come! * or see Page 20
Hike	Apr. 14, 10 am	Rancho San Antonio	Just come! * or see Page 21
Golf \$	Apr. 16, 10 am – 4 pm	San Jose Muni Golf Course	Apr. 11, or see Page 14
Hike	Apr. 22, 10 am	Henry Cowell Redwoods State Park	Just come! * or see Page 21
Help	April 23, 9:30am – 1pm	St. Anthony's Padua Dining Room	Apr 9, or see Page 10
Help	May 6, 9:00 am – Noon	RAFT in Sunnyvale	Apr. 22, or see Page 10
Tour	May 7, 9:30 – 11:30 am	HP Garage, Palo Alto	Tours filled, see Page 13
Hike	May 12, 10 am	San Francisco Stairway Walk	Just come! * or see Page 21
Tour \$	May 20, 7:15 am – 4:30 pm	SF Symphony Open Rehearsal	May 20, or see Page 15
Hike	May 20, 10 am	Don Edwards SF Bay Refuge	Just come! * or see Page 22
Golf \$	May 21, 10 am – 4 pm	Spring Valley, Milpitas	May 16, or see Page 14
Tour \$	May 27 9:00 am – 3:30 pm	Canepa Auto Museum + Santa Cruz	May 20, or see Page 16
Picnic \$	June 6, 11:00 am – 4:00 pm	HPREC Picnic – Mountain View	May 22, or see Page 17
Golf \$	Jun. 11, 10 am – 4 pm (second Thursday due to schedule conflict)	Santa Clara Golf & Tennis Club -	Jun. 6, *
Tour \$	July 14, 10am-3pm	Almaden Quicksilver Mining Museum	Jul. 6, or see Page 18
Golf \$	Jul. 16, 10 am – 4 pm	Sunnyvale Golf Course	Jul. 11, *
Golf \$	Aug. 20, 10 am – 4 pm	San Jose Muni Golf Course	Aug. 15, *
Golf \$	Sep. 17, 10 am – 4 pm	Spring Valley, Milpitas	Sep. 12, *
Trip \$	Sep. 20-28	Iceland Land Tour	Mar. 21, * or see Page 19
Golf \$\$	Sep. 21, 9 am – 7 pm	Bill & Dave Charity Golf Classic Peninsula Golf & Country Club, San Mateo	http://billanddavegolf.com/
Golf \$	Oct. 15, 10 am – 4 pm	Los Lagos, San Jose	Oct. 10, *
Tour	Nov. 5, 9:30 – 11:30 am	HP Garage, Palo Alto	Tours filled, see Page 13
Luncheon \$	Dec. 7, 11am-2pm (Tentative)	HPREC Holiday Luncheon	Save the Date!

* Online Events Calendar: Go to www.hpretirees.org/hprec and click on Calendar of Events.

HPARV “Done in a Day” Volunteer Opportunities

Join your fellow HP/Agilent/Keysight retirees at the following events:



St. Anthony's Padua Dining Room.

We will prepare and serve food. Some tasks require standing.

For the past 35 years, the Padua Dining Room has pursued its mission to provide hot, well balanced meals to people in the community. They serve low-income people with as many as 600 hot nourishing meals a day, six days a week.

Date & Time: **Thursday, April 23, 2015, 9:30 am – 1 pm**

Place: St. Anthony's Padua Dining Room
3500 Middlefield Road, Menlo Park, CA

Directions: From Highway 101, take exit #406/Marsh Road; go southwest.
In 1.3 miles, go right onto Middlefield Road. Padua Dining Room is 0.5 of a mile down Middlefield Road on your left.
From Highway 280, take Hwy 84/Woodside Road to Middlefield Road and turn right. Padua Dining Room is 1.3 miles down Middlefield Road on your right.

RSVP ***hp.agilent.volunteers@hotmail.com*** or call **John McCabe** at 650-328-3472
by April 9, 2015



RAFT, Resource Area for Teaching, is a nonprofit organization that believes hands-on teaching is the best way for teachers to teach and students to learn. They provide creative hands-on activity kits, educational resources, workshops and inexpensive materials to enrich pre K-12 education and community group programs. Their goal is to assist teachers, nonprofits and community groups by providing materials and ideas for day-to-day teaching and for supporting professional growth. Volunteering at RAFT is a fun, easy and convenient way to support local teachers. RAFT's products, services and low-cost teaching supplies enrich and improve the education of over 825,000 young people each year. Volunteers help keep the cost of RAFT products affordable for educators by sorting the different raw materials that are donated and packaging RAFT hands-on learning activity kits. Casual dress and closed-toe shoes are recommended. Work is generally clean and low-impact.

Date & Time: **Wednesday, May 6, 2015, 9 am – 12 pm**

Place: RAFT Volunteer & Processing Center
1160 Kern Ave., Sunnyvale, CA 94085

Directions and more information: <http://www.raftbayarea.org/location-sobrato-center>

RSVP: ***hp.agilent.volunteers@hotmail.com*** or call **John McCabe** at 650-328-3472 **by April 22**



ANNUAL **HPREC SPRING FLING** LUNCHEON

Monday, March 16, 2015

Doors open at 11 am; Luncheon at 12 noon

Mariani's Inn and Restaurant, 2500 El Camino Real, Santa Clara

Choice of Entrée:

- **Corned Beef & Cabbage**
- **Filet of Sole Almandine**
- **Vegetarian Pasta Primavera**
- **Pasticcio Roasted Pork Tenderloin**

Served with fresh garden salad, French roll & butter, dessert,
and freshly brewed coffee or tea

GUEST SPEAKER: John Sontag

Vice President and Director of Systems Research at HP Labs

Cost: After March 4 / at the door - \$35 per person.

For further information contact Harold Kaye 408-257-9629 or kaye_harold@yahoo.com

You can sign up & pay online at www.hpretirees.org/hprec or complete the form below.

-----cut here-----

EVENT: Spring Fling 2015

_____ person(s) @ \$35 / person after Mar. 4 = \$_____ Total

(PLEASE WRITE ONE CHECK PER EVENT)

PLEASE PRINT NAMES:

Member Name _____

Phone () _____

Spouse/Guest Name _____

Phone () _____

(Please CIRCLE if spouse or guest—is this person a member? ...YES ...NO)

Emergency Contact _____

Phone () _____ Member

Emergency Contact _____

Phone () _____ Guest

SEND RESERVATION FORM & CHECK TO: HPREC, P.O. Box 86, Mountain View, CA 94042-0086

Choice of entrée: _____ Corned Beef & Cabbage

_____ Pasticcio Roasted Pork Tenderloin

(Specify number) _____ Filet of Sole Almandine

_____ Vegetarian Pasta Primavera

EVENT: Harley Farms Goat Dairy - **Mar 19, 2015**

_____ person(s) @ \$75 per person = \$_____ Total
(PLEASE WRITE ONE CHECK PER EVENT)

PLEASE PRINT NAMES:

Member Name _____

Phone () _____

Spouse/Guest Name _____

Phone () _____

(Please **CIRCLE** if spouse or guest—is this person a member? ...YES ...NO)

Emergency Contact _____

Phone () _____

Member

Emergency Contact _____

Phone () _____

Guest

SEND RESERVATION FORM & CHECK TO: HPREC, P.O. Box 86, Mountain View, CA 94042-0086

EMAIL ADDRESS FOR TRIP CONFIRMATION: _____ (Please Print)

-----cut here-----



Baby Goats and Cheese

Harley Farms Goat Dairy & Duarte's Tavern

Thursday, March 19, 2015

\$75 per person

Join HPREC for a visit to Harley Farms Goat Dairy and Cheese Shop in Pescadero on March 19, 2015. The two hour hands-on tour starts with the goat nursery. Wear sturdy shoes for the tour and bring a small cooler if you wish to purchase the goat cheese from the store.



Lunch will be at Duarte's Tavern, famous since 1894 for cioppino, artichoke dishes and olallieberry pie.

The menu will be choice of a soup (*includes the famous artichoke soup*) and a sandwich with fries. Olallieberry pie is extra at \$6.50. Details will be provided after you sign up.



Bus leaves Vallco parking lot behind Penney's in Cupertino at 9:30 am and returns to Vallco at 4 pm.

For additional information or questions, please contact the trip leaders during normal business hours of 9 am to 5 pm Monday-Friday. Exceptions for emergencies only, please.

Trip Leaders:

Gail Eatock

408 446-0428

taichats2@att.net

or

Pat Fausett

650 941-7093

pat.fausett@sbcgglobal.net

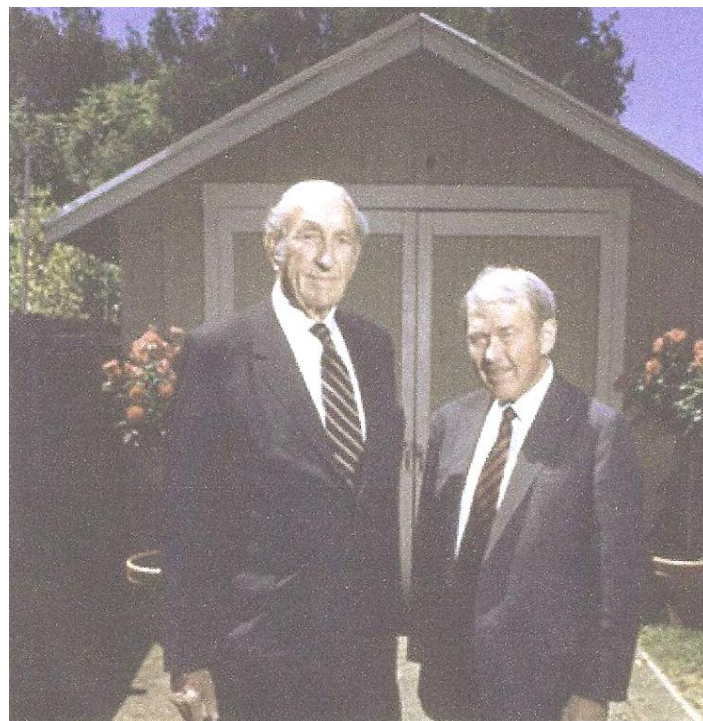
2015 Tours full, working on 2016 dates

A STEP BACK IN TIME!

Tours of the HP Garage began in October of 2010. 2016 schedule to be decided.

Tours will be limited to 10 Club members/guests per tour and you must sign up through HPREC.

Tours are free and start at 10 am and last approximately one-and-a-half hours.



We will meet at 9:30 a.m. at HP in Palo Alto in the parking area by Bldg. 20's former carwash/garage (off Hanover near the top of the hill).

For 2015 Wait list or additional information or questions, please contact the Trip Leaders during normal business hours of 9 am to 5 pm, Monday – Friday. Exceptions for emergencies only, please. Trip Leaders: Gail Eatock 408-446-0428 or taichats2@att.net or Pat Fausett 650-941-7063 or pat.fausett@sbcglobal.net

HPREC Golf Tournaments in April and May



Notes:

- Each HPREC member may invite one guest.
- Pay for golf carts in the pro shop at check-in.
- For further information, call **Phil Smith** at 408-749-1656.

San Jose Municipal Golf Course

1560 Oakland Road
San Jose, CA 95131
408-441-4653

Date: **Thursday, April 16, 2015**

Starting Time: **10 am**

Reservations due by: Saturday, April 11

Cost: **\$39** (includes \$2 prize fund)

Make check(s) payable to HPREC GOLF
and mail with this form to:

HPREC Golf,
c/o Phil Smith,
802 Beaverton Court,
Sunnyvale, CA 94087

-----cut here-----

HPREC GOLF RESERVATION

San Jose Muni, April 16, 2015

NAME	CART?	EMAIL**

** Only if not on file

Spring Valley Golf Course

3441 Calaveras Blvd.
Milpitas, CA 95035
408-262-1722

Date: **Thursday, May 21, 2015**

Starting Time: **10 am**

Reservations due by: Saturday, May 16

Cost: **\$41** (includes \$2 prize fund)

Make check(s) payable to HPREC GOLF
and mail with this form to:

HPREC Golf,
c/o Phil Smith,
802 Beaverton Court,
Sunnyvale, CA 94087

-----cut here-----

HPREC GOLF RESERVATION

Spring Valley, May 21, 2015

NAME	CART?	EMAIL**

** Only if not on file

EVENT: SF Symphony Rehearsal, May 20, 2015

_____ person(s) @ \$53 = \$_____ Total
(PLEASE WRITE ONE CHECK PER EVENT)

PLEASE PRINT NAMES:

(Member) Name _____ Phone () _____

(Spouse/Guest) Name _____ Phone () _____

(Please CIRCLE if spouse or guest—is this person a member?...YES...NO)

(Member)EmergencyContact _____ Phone () _____

(Spouse/Guest)EmergencyContact _____ Phone () _____

REMIT TO: HPREC, P.O. Box 86, Mountain View, CA 94042-0086

EMAIL ADDRESS FOR TRIP CONFIRMATION _____ (Please Print)

-----cut here-----

HPREC GOES TO THE SAN FRANCISCO SYMPHONY OPEN REHEARSAL

WEDNESDAY MAY 20, 2015

MICHAEL TILSON THOMAS CONDUCTS OPEN REHEARSAL

SFS principal musicians Alexander Barantschik and Jonathan Vinocour are soloists in Mozart's magnificent Sinfonia concertante, a virtuosic double concerto for violin and viola. Then MTT conducts a concerto showcasing the entire San Francisco Symphony: Bartók's masterpiece, the Concerto for Orchestra.

Katherine Hanrahan Open Rehearsal is a working rehearsal. The pieces rehearsed are at the conductor's discretion.

Cost = \$53 per person

**After the Rehearsal, enjoy lunch on your own
and shopping at Pier 39**



Coffee and free donuts 8:30 am; Lecture 9 am

Symphony rehearsal 10 am until finish

Pier 39 lunch and shopping until 3 pm

Depart from Vallco Shopping Mall, Cupertino at 7:15 am

Return to Vallco Shopping Mall, Cupertino at 4:30 pm

For additional information or questions, please contact Trip Leader during normal business hours of 9 am to 5 pm, Monday – Friday. Exceptions for emergencies only, please. Trip Leader: Don Higgins at 408-736-1918 or donald1090@comcast.net or Pat Fausett 650-941-7063 or pat.fausett@sbcglobal.net

Zoom, Zoom

Canepa Motorsports Museum

May 27, 2015 \$61



Guys (and gals too), ever wanted to get up close and personal with a high performance race car? Join HPREC for a tour of the Canepa Motorsports Museum in Scotts Valley on May 27, 2015.



Lunch at Crow's Nest in Santa Cruz.

Choice of: Charbroiled Chicken Breast; Sirloin Angus Steak; Seafood Thermidor; Butternut Squash Ravioli. A house salad with Bay shrimp, warm bread and butter, and a choice of coffee, tea or soft drink. No host bar drinks.



Bus leaves Vallco Shopping Mall 9 am

Return 3:30 pm.

Leaders: Gail Eatock 408-446-0428 / taichats2@att.net; Pat Fausett 650-941-7063 / pat.fausett@sbcglobal.net
For additional information please contact trip leaders during regular business hours 9 am to 5 pm.

-----cut here-----

EVENT: CANEPA MOTORSPORTS

_____ persons(s) @ \$61 per person by May 20, 2015 = \$_____ Total
(PLEASE WRITE ONE CHECK PER EVENT)

PLEASE PRINT NAMES:

Member Name _____ Phone () _____

Spouse/Guest Name _____ Phone () _____

(Please CIRCLE if spouse or guest—is this person a member?...YES...NO)

Emergency Contact _____ Phone () _____ Member

Emergency Contact _____ Phone () _____ Guest

Select: Charbroiled Chicken___ Sirloin Angus Steak___ Seafood Thermidor___ Butternut Squash Ravioli___

REMIT TO: HPREC, P.O. Box 86 Mtn. View, CA 94042-0086

Email for trip confirmation _____ (Please Print)

PICNIC!



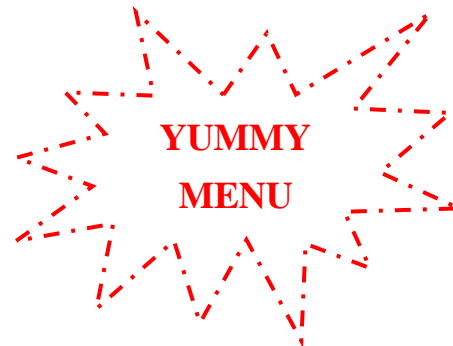
Cuesta Park

615 Cuesta Drive near Grant Road
Mountain View, CA

Saturday, June 6, 2015

11 am - 4 pm
\$30 per person
(adults only)

Bingo: 1:30 pm



BBQ Spare Ribs/Chicken
(sauce on side),
Seasoned Ranch Beans,
Buttered Corn on the Cob,
Chopped Salad, Garlic Bread,
Cookies, Sodas, Beer & Wine

For additional information or questions, please contact one of the Picnic Co-chairs
between 9 am and 5 pm, Monday – Friday. Exceptions for emergencies only, please.

Co-chairs: Elizabeth Shen ba.picnic@hpretirees.org or 408-318-8064
Pat Capshaw ba.picnic@hpretirees.org or 408-255-6385

BY MAY 22: Sign up & pay online at www.hpretirees.org under Calendar of Events –or– complete form below.

-----cut here-----

EVENT: HPREC Picnic 2015

_____ person(s) @ \$30 = \$_____ Total
(PLEASE WRITE ONE CHECK PER EVENT)

PLEASE PRINT NAMES:

Member Name _____ Phone () _____

Spouse/Guest Name _____ Phone () _____

(Please **CIRCLE** if spouse or guest—is this person a member?...YES ...NO)

Emergency Contact _____ Phone () _____ Member

Emergency Contact _____ Phone () _____ Guest

BY MAY 22: SEND RESERVATION FORM & CHECK TO: HPREC, P.O. Box 86, Mountain View, CA 94042-0086

Your reservation will be considered confirmed once your sign up/reservation form and payment have been received.

For ordering purposes, **please indicate your beverage choice(s).** Water will also be provided, of course.

___Beer ___Wine ___Coke ___Diet Coke ___Pepsi ___Diet Pepsi



Picnic Volunteers Needed

We need your help! Please check your interest below and return this with your registration and check.

Yes, I want to help with: ___ Set-up ___ Serving ___ Cookies/Drinks ___ Clean-up

Email Address: _____ (Please Print)

EVENT: ALMADEN QUICKSILVER MINING MUSEUM

_____persons(s) @ \$5 per person by July 6, 2015 = \$_____Total

(PLEASE WRITE ONE CHECK PER EVENT)

Indicate if you will carpool from Vallco Shopping Center: Drive____Ride____Meet at Museum____

PRINT NAMES:

Member Name _____ Phone () _____

Spouse/Guest Name: _____ Phone () _____

(Please *CIRCLE* if spouse or guest is a member?...YES...NO)

Emergency Contact _____ Phone () _____ Member

Emergency Contact _____ Phone () _____ Guest

REMIT TO: HPREC, P.O. Box 86 Mountain View, CA 94042-0086

Email for trip confirmation _____ (Please Print)

-----cut here-----

ALMADEN QUICKSILVER MINING MUSEUM



July 14, 2015

A drive yourself event

Mining operations in New Almaden first began in 1845 when Mexican Cavalry Officer Captain Andres Castillero discovered that the red rock used by the local Ohlone Indians to paint themselves and the walls of the Santa Clara Mission was cinnabar, an ore containing mercury

HPREC will have a private tour at 11 am, Tuesday July 14, 2015, before the museum opens to the public at noon. The tour takes about one hour; the gift shop opens at noon.

The museum is located at 21350 Almaden Road, just past the Post Office. From Highway 85 take the Almaden Expressway, exit south 4.5 miles to Almaden Road. Turn right and proceed 2.5 miles west to the town of New Almaden. The museum will be on the left



Meet at 10:45 am at the Museum, or if you are interested in carpooling, meet at 10 am at the Vallco parking lot behind Penney's. Please indicate on your reservation if you need a ride or can drive

We are collecting \$5 each for a donation to the museum

Leaders: Carol Arnett 408-732-5194 carol_a94087@yahoo.com; Pat Fausett 650-941-7063 pat.fausett@sbcglobal.net
Please call during business hours 9 am – 5 pm.

HPREC & COLLETTE TOUR OF INSPIRING ICELAND

SAVE \$200

PER PERSON IF BOOKED (AND SPACE IS AVAILABLE) BY MARCH 21, 2015

September 20 - September 28, 2015

9 Days • 10 Meals

7 Breakfasts • 3 Dinners

Highlights: Reykjavik, Golden Circle, Thingvellir National Park, Snafellsnes Peninsula, Puffin Cruise, Blue Lagoon

Rates Per Person

DON'T MISS OUT! BOOK NOW!

**Double \$4,714, Single \$5,264,
Triple \$4,684**

REGULAR RATES

**Double \$4,914, Single \$5,464,
Triple \$4,884**

***Included in Price:** Cancellation Waiver and Insurance of \$215 per person, Round Trip Air from San Francisco Intl Airport, Air Taxes and Fees/Surcharges, Hotel Transfers



Click for Additional Info: [**HPREC Tour**](#)

Please contact **Donald Higgins** at 408-736-1918 or donald1090@comcast.net or **Debbie Lum**, Accredited Cruise Counselor, at 408-773-8332 or dlum@cruiseplanners.com for more information and to book your trip.

HPREC Monthly Activities *By Lidia Donez*

Golf *By Phil Smith*



Since the weather this winter has been so great for golf (not so great for the needed rain), I assume all you golfers out there are more than ready to tee up with HPREC.

The Club's eight tournament golf season starts on Thursday March 19, at Sunnyvale Golf Course. The Golf flyer for this tournament was in January's newsletter, as the distribution date of this newsletter is very close to the tournament date. If you haven't signed up for Sunnyvale yet, and you'd like to play, give me a call at 408-749-1656, and I'll make sure you'll be able to play at this popular venue.

The Golf flyer in this newsletter has the next two tournaments for your sign-up: San Jose Muni on April 16 and Spring Valley on May 21. Both courses are Club favorites and are extremely user-friendly. So, grab your Club golfing buddy or guest golfer and sign up to play these great local courses. You never know, you may wind up with a bunch of golf ball prizes and a head start to winning the highly coveted Golfer-of-the-Year Award.

Golfers of all levels of play are welcome, and the Club's handicap system will put all golfers at an equal level. If you're in the Club and play golf, but haven't ventured out to play in these friendly tournaments, you should give it a try. The Club's tournaments are for the enjoyment of the game, getting together with friends, and enjoying the great outdoors. Besides, the 19th hole is where all the great shots of the day are captured for posterity.

So, please remember to calendar all eight tournaments for the year (they're detailed in the January newsletter in the Monthly Activities section) and enjoy the outings with your HP/Agilent/Keysight friends. See you at the golf course!

"The people who gave us golf and called it a game are the same people who gave us bag pipes and called it music."
Anonymous

Tours of the HP Garage – 2015 Tours Are Filled

Look for the flyer in this newsletter about an upcoming opportunity to visit true HP history. Two FREE tours of the HP Garage will be conducted in the spring and fall of 2015 and are limited to 10 Club members/guests per tour. They offer a free one and one half-hour tour of the HP Garage in Palo Alto, HP's first business site. Contact Leaders to be added to Standby/Wait list for filled tours in 2015.

Bowling for fun! *By Bernard Bruand*



Come join us at Homestead Lanes at 20990 Homestead Road, Cupertino. It's the 2nd Monday of each month. Price is \$9/hr or \$5.50/game (we bowl 2 games; depending on number of people bowling, our cost may vary between \$11-13.50). Shoe rental is separate. The next few bowling events are **April 13, May 11 and June 8 from 11 am - 12:30 pm.**

If interested, contact Bernard Bruand at ba.president@hpretirees.org or find phone number in the Club Directory.

(L-R): Harold Kaye, Bernard Bruand, JoAnn Taylor, Herb Knoesel, Bill Taylor, Barbara Trone, John Trone, Gene Doucette.

Hikes in April and May *By Jim Holl*



Rancho San Antonio County Park and Open Space Preserve	Tues. Apr 14, 10 am Rainout Apr 21, 10 am	\$2 to reimburse the carpool drivers	Leader: Jade and Chris Simonson 650-969-3450
<p>Meet at the Usual Carpool Location* or if you drive there directly, meet us at the Rancho San Antonio Open Space Preserve parking area. Exit Highway 280 at Foothill Boulevard and go south toward the hills. Take the first exit onto Cristo Rey Drive. Go around the round-about and continue on Cristo Rey Drive. Turn left into the Rancho San Antonio Open Space Preserve. Stay right and go until the road ends in the parking lot. Meet by the bathrooms in the County Park parking area. The hike should start about 10:15 am. Parking is limited at Rancho San Antonio, so please carpool.</p> <p>April should be a good time to hike the Rancho San Antonio Open Space Preserve. We should see elderberry, alder, dogwood, blue and valley oaks, California bay, buckeye, sage, toyon, coyote bush, and plenty of poison oak (be forewarned). There are restrooms at the parking area and near Deer Hollow Farm.</p> <p>Bring water, lunch, hiking sticks, sunblock, and \$2.00 to reimburse the carpool drivers.</p> <p>Length: About 5 miles. Duration: 4 hours. Difficulty: Moderate - up and down some rather strenuous hills. No dogs. Not wheelchair accessible (too steep).</p>			
Henry Cowell Redwoods State Park Lite Hike	Wed. Apr 22, 10 am No rainout date; we go rain or shine	\$10 per car entrance fee	Leader: Jim Holl 408-446-2963 or 408-528-5846 cell
<p>Meet at the parking lot located at the northeast corner of Highway 9 and Santa Cruz Avenue (across from the abandoned (green) Hobee's Restaurant) in Los Gatos. To get there, take Highway 17 south toward Los Gatos. Exit at Highway 9 - Los Gatos/Saratoga and continue west on Highway 9 (approximately 1/3 mile) to the parking lot on the right just before Santa Cruz Avenue. The carpools will depart at 10:00 am.</p> <p>From the carpool site, take Highway 17 south from Los Gatos to Mt. Herman road (exit 3) west (turn right toward Felton) for 3.5 miles to Graham Hill Road (where road ends), right for 0.2 mile to the next stop light (Highway 9). Turn left on Highway 9 and go through downtown Felton for 0.7 mile to the entrance of Henry Cowell Redwoods State Park. Turn left into the park and proceed to the Park Entrance Station. The entrance fee is \$10 per vehicle (bring your annual pass if you have one). We will gather for our hike of the Redwood Grove Loop Trail near the visitor center. This trail is 0.7 mile long. A short walk to Roaring Camp Railroads can easily be added.</p> <p>This walk is through a Redwood Forest and includes the historic John C. Fremont tree. Bathrooms are available at the parking area, at the Fremont tree and at Roaring Camp Railroads.</p> <p>Length: 0.7 mile. Duration: Less than an hour. Difficulty: Easy. No dogs on trail. Wheelchair accessible.</p>			
San Francisco Stairway Walk of Dolores Heights	Tues. May 12, 10 am Rainout: May 19, 10 am	\$4 to reimburse the carpool drivers	Leader: Jim Holl 408-446-2963 408-528-5846 cell
<p>Meet at the Usual Carpool Location *, or if you would like to meet at the hike site, form your own carpool and meet at the Randall Museum located at 199 Museum Way in San Francisco. Free parking is rare in this part of the city; please carpool or travel to the Castro Muni Station. Those arriving by Muni can either wait for the group to walk through the station or can come up the hill where restrooms are available at the Randall Museum. Note that there are no restrooms during the walk.</p> <p>Last taken in 2011, this San Francisco stairway walk includes Dolores Heights, the heart of the Castro District, and the Vulcan Stairway in Corona Heights. The highlight of the walk is the 'painted lady' like houses from the latter part of the 1800s. The route chosen is from <u>Stairway Walks in San Francisco</u> by Adah Bakalinsky. We pass through the heart of the Castro District twice. Our final stairway is the Vulcan Stairway which is nicely landscaped and is one of the group's favorites.</p> <p>Bring water, lunch, and \$4 to reimburse the carpool drivers</p> <p>Length: About 4 miles. Duration: About 3 hours. Difficulty: Moderate. Dogs OK, but not recommended. Wheelchair accessible with some steep paved sections.</p>			

Hikes in April and May (continued)

Don Edwards San Francisco Bay National Wildlife Refuge Lite Hike	Wed. May 20, 10 am No rainout date; we go rain or shine.	Free	Leader: Carol Arnett 408-732-5194
Meet at the Environmental Education Center parking lot at the Don Edwards San Francisco Bay National Wildlife Refuge in Alviso. From Interstate 880 or Highway 101, exit on Highway 237 toward Alviso. Turn north onto Zanker Road. Continue on Zanker Road to the Environmental Education Center entrance road just past the railroad tracks (a sharp right turn at Grand Boulevard). The distance from Highway 237 is just over two miles. Bring water and binoculars. There are porta-potties in the parking lot and indoor toilets. Length: About 2 miles. Duration: 1.5 hours. Difficulty: Easy. No dogs. Wheelchair accessible.			

* **The Usual Carpool Location** is the Enid Pearson Arastradero Preserve parking area. From I-280, exit on Page Mill Road and go SW for about half a mile. Turn right on Arastradero Road and go 1.2 miles. The parking area is on your right. Join your fellow hikers near the restrooms.

Hiking Email List: Updates, specifics and reminders will go out to the “HPREC Hiking Distribution List” about one week prior to the hike. If you are not on that list, contact John McCabe (leonaandjohn@att.net).



HPARV Volunteer News

hp.agilent.volunteers@hotmail.com

RAFT - Resource Area for Teaching *By John McCabe*

RAFT had the HPREC volunteers do something different this past January. RAFT had had a book drive over the holidays. A very large number of new and gently used books were donated to Raft. Eleven HP, Agilent, and Keysight retiree volunteers sorted them by grade level (pre-K, 1-3, 4-6, 7-9, and 10-12) and put the books into cartons so that teachers could select books appropriate for their classroom. We sorted and packed over 4,000 books into cartons for distribution to local schools.



(L-R): John McCabe , Fran Low, Marsha Lee , Ronda Rosner, Mike Tada, Eileen Ruppel, Cherie Baker, Carol Arnett, Marialis Seehorn, Irene Wright, and Gail Mantegani.

Bagging It In!! *By Marialis Seehorn, photo by Marsha Lee*

“Mmmm good!” Campbell soup eaters weren't the only folks saying that in February. I'm sure that comment was repeated in many households in Sunnyvale as the clients of Sunnyvale Community Services opened the bags of produce we had put together for them. Lots of veggies for salads and cooking, and an assortment of citrus were included. While our team was smaller than usual, the members were just as energetic and enthusiastic. Within a couple of hours, we had stuffed some 160 bags with enough vegetables and fruits to make many nutritious meals and snacks over the next couple of weeks. Another successful day for our volunteers! Thanks to one and all!



(L-R): Cherie Baker, Nancy Lem, Keith Lee, Marialis Seehorn, John McCabe, Rose Mary Brodbeck, and Marsha Lee.

Hiking News *Compiled by Gary Ruppel*

Palo Alto Baylands *By John McCabe*

Ed White, who has been faithfully leading hikes since 2003, had signed up to lead January's hike. He had a rather serious stroke and was not able to lead the hike. Ed was able to join his HP retirees hiking friends at the Palo Alto Baylands, however. He walked for one and a quarter miles before he and our daughter Susan turned around. It was a perfect first hike attempt for Ed, as they were walking on a very level gravel path. He enjoyed it, although he got tired. The remaining eleven HPREC Hikers continued around Charleston and Mayfield Sloughs, and portions of the Matadero and Adobe Creeks. They saw lots of shorebirds, including a great blue heron, some great and snowy egrets. There were lots of ducks (most especially shovelers), avocets, and stilts. A marbled godwit and a couple of long-billed curlews posed nicely so that

we could compare their long bills.



A fossilized Google bike?



(L-R): Stan McCarthy, Pat Wilcox, Susan Pretel, Ronda Rosner, Eileen Ruppel, Chuck Sieloff, Herb Knoesel, Ed White, Gary Ruppel, Jim Holl, Dee Baily and John McCabe.

The Baylands Preserve is the largest tract of undisturbed marshland remaining in the San Francisco Bay. Many consider this area to be one of the best bird watching areas on the West Coast. If you are interested doing a similar hike, take the San Antonio North exit off Highway 101 and take San Antonio Road to its end. Turn right onto Terminal Boulevard, park in the first available spot. There are bathrooms at the signed trailhead. We took the Adobe Creek Loop to Palo Alto's Byxbee Park where we ate our lunch. It also has bathrooms. We returned by way of Byxbee Park, along Matadero Creek and a portion of East Bayshore Road.

Stanford University Lite Hike *By Eileen Ruppel (leader) w/photo by John McCabe, photo editing by Janet Holl*

Thirteen lucky Lite Hikers enjoyed a stroll through the Stanford University campus on a beautiful January day. Beginning at the Cantor Arts Center, we walked between the David Packard Electrical Engineering Building and the William R. Hewlett Teaching Center (two separate structures) before passing the Terman site. We spent a few minutes admiring the New Guinea



New Guinea Gardens

Gardens before returning to the Cantor Center. Along the way, we passed the Hoover Tower, some of the outdoor sculptures, the

Oval, and ended with Andy Goldsworthy's sandstone sculpture, "Stone River." Free maps of the outdoor sculptures are available at the Center.



(L-R): Jim Holl, John McCabe, Bob Steward, Marty Bollman, Shirley Kwan, Janet Holl, Gary Ruppel, Barbara Beebe, Carol Arnett, Martha Maris, Ronda Rosner, Kuo Jung Chang, Eileen Ruppel.

Coyote Hills East Bay Regional Park *By John McCabe (leader)*



(L-R): Dee Baily, Ronda Rosner, Chuck Sieloff, Eileen Ruppel, Jade Sorenson, Bernard Bruand, Chris Sorenson, John McCabe.

Eight HPREC hikers enjoyed a beautiful day at Coyote Hills East Bay Regional Park. It rained the three days before the hike which left the hills lovely shades of green and the skies very clean. The first of the California poppies were blooming cheerfully on the hilltops. We saw a great egret swallow what we think was a vole. After climbing up and down all the hills you see by the San Francisco Bay just north of the Dumbarton Bridge, we ate lunch at lovely picnic tables with water and bathrooms nearby.

You should explore the Coyote Hills East Bay Regional Park yourself. You can view shorebirds and



migratory bird species along the marshlands; or you can climb some strenuous hills to see the great views; or you can do what we did and do both. The area is dotted with Ohlone Indian sites and has beautiful rock outcroppings. To get there from the peninsula, take Highway 84 across the Dumbarton Bridge to Paso Padre Parkway in Fremont (to get there from the East Bay, take Highway 84 and exit just before the toll booths). Go 1.2 mile north on Paso Padre, then turn left onto Patterson Ranch Road.

Bedwell Bayfront Park Lite Hike *By Gary Ruppel, co-leader Eileen Ruppel with photo by John McCabe*

Menlo Park's Bedwell Bayfront Park is part of the San Francisco Bay Trail. The park's 160 acres are surrounded on three sides by the Don Edwards San Francisco Bay National Wildlife Refuge. Thirteen of us took the relatively flat 2.3 mile trail around the perimeter of the park. The San Francisco Bay Trail is planned to encircle San Francisco and San Pablo Bays with a continuous 400-mile network of bicycling and hiking trails, connecting the shoreline of all nine Bay Area counties and linking 47 cities. The park was built on the site of a former landfill. The landfill has been turned into natural-looking hills covered with grasses, bushes, and scattered eucalyptus and pine trees. A complex network of paths covers the hills. They range from old paved landfill roads, to new smooth gravel bike paths, to narrow rugged footpaths. Surrounding the hills are salt ponds, salt marshes, and sloughs. Along the park road are several parking lots and a restroom.



(L-R): John McCabe, Sally Dudley, Gary Ruppel, Jim Holl, Eileen Ruppel, Ed & Patti White, Chuck Sieloff, Shirley Kwan, Fred Kohler, Barbara Beebe, KJ Chang, Carol Arnett.

Although the day began with some overcast skies, by the start of the hike it was sunny and quite warm. Nothing like the weather in January in the Bay Area!

To get there, take 101 to the CA-84 E/Marsh Road exit. Take Marsh Road east .8 mile to the park entrance. (Stay in the left lane to go straight.) The restrooms are straight ahead just a little beyond the park entrance. There is ample parking.

HPREC member Patsy Ruth Biondi, 76, of Santa Rosa, CA, passed away peacefully November 25, 2014, after losing her battle with cancer. She was preceded in death by her husband, Robert Biondi, her mother, Helen Mitchell, and her brother, Donald Shepard. She is survived by her three wonderful children: son Steven Alcocer, daughter Pamela Imbimbo, and son Anthony (Tony) Alcocer. She loved and was loved by many, including her daughters-in-law, Marilyn and Mary Alcocer; her son-in-law Kevin Imbimbo, 15 grandchildren, 11 great grandchildren, and many other cherished family members and dear friends. She touched many lives and will be forever missed. *(Submitted by Steve Alcocer, son)*

HPREC member Chuck Ernst (Charles Robert Ernst) 98, of San Francisco, CA, passed away in Palo Alto, CA on December 18, 2014. He was born in San Francisco in 1916, but spent his early years in Merced, CA. He moved to Oceanside when he was 12 and enrolled as a freshman at Oceanside-Carlsbad High School. From there Ernst attended UCLA and earned a BS degree in Business. He also obtained a commission as an Ensign in the US Navy Supply Corps Reserve. He returned to Oceanside, took flying lessons, and obtained a Private Pilot license. Then he received orders to attend the Navy Supply Officer School at the Philadelphia Navy Yard. He was working as Disbursing Officer for the Fleet Air Detachment at Naval Air Station, San Diego, when Pearl Harbor was attacked by Japan. Throughout most of WWII, Ernst was on duty in the Pacific with various Fleet Air Wings and Naval Air Transport Squadrons. After the war, in 1948, when the Soviets blockaded all surface traffic between Berlin and the West, the Western Powers began Operation Vittles to feed and sustain Berlin totally by aircraft. The Navy ordered Ernst to proceed without delay to Wiesbaden, Germany, and report to Headquarters, U.S. Air Forces in Europe as the Navy Liaison Officer for Operation Vittles, the Berlin Airlift. In 1949, after the blockade was defeated, Ernst was awarded the Legion of Merit by the Secretary of the Air Force, and he was reassigned to Navy duty in the U.S. In 1953 the Navy enrolled Ernst in the Stanford Graduate School of Business where he earned an MBA. "The Navy needs business-oriented supply officers," he said. After more than 22 years in the Navy, Ernst retired from military life and joined Hewlett-Packard in the Customer Service Department and, in about 1963 he replaced Carl Mahurin as Corporate Customer Service Manager. Ernst was also active for many years in fund raising for the Graduate School of Business. He was a member of Stanford Associates. In 1986, he retired from HP at age 70. *(Submitted by Chris Moser, daughter)*

John Joseph Peth, 83, of San Jose, CA passed away on January 6, 2015. John was the first child of George and Josephine Peth. John was born and raised in Chicago, Illinois. He grew up just a few houses away from Wrigley Field, and enjoyed watching the Cubs and hunting for loose change after games. Eager to strike out on his own and serve his country, John enlisted in the army and served as a sergeant during the Korean War. Through an introduction by his best friend, John met Rosina Chelli, a beautiful young woman who had recently immigrated from Fossato, Italy. That fateful encounter led to 60 years of marriage and three children. In 1960 John and Rosina moved their family to San Jose in search of better job opportunities, warmer weather and a smaller city in which to raise their children. John loved exploring the great outdoors with Rosina at his side. He enjoyed dirt bike riding, camping in the Sierras, picnics at the beach, and driving on open highways. After retiring from a lengthy career with Hewlett Packard, John and Rosina enjoyed long scenic road trips and touring the National Parks. John also had a profound love of tools, and could frequently be found tinkering in the garage, working on his cars or motorcycles, or in the backyard tending to the vegetable garden he took such pride in. All who knew John will fondly miss his unique, quick wit and playful sense of humor. John's legacy lives on through his three children: Harold (My-em), Jerry (JoAnne), and JoAnn Ernst (Don), along with seven grandchildren and a great granddaughter. He will be missed by his devoted sister-in-law Tina Gemignani, brother-in-law Neal Brabazon, sister Georgia Tynan, brother Tom (Darlene) Peth, and numerous nieces and nephews in the U.S. and Italy. *(San Jose Mercury News/San Mateo County Times on Jan. 17, 2015)*

To place a notice or provide information about HP/Agilent/Keysight retirees that you know, please email Bernard Bruand, at ba.sympathy@hp retirees.org or refer to the HPREC Membership Directory for his phone number or mailing address.
