

HPREC NEWS



Agilent Technologies

Fun, friendship, service, memories for members of the Bay Area Hewlett-Packard Retired Employees Club, Inc.

JANUARY 2015

Issue: #98

HPREC President's Message *By Bernard Bruand*



This newsletter is the first where I write the president's message. So it will be different in many ways.

First I want to thank John McGowan for leading the Club as its President for the last two years. I appreciate that John continues his involvement in the Club as Vice President and can help me learn the job, as I am still relatively new to the Club altogether.

I will give you a quick overview of my career at HP and personal background. As you noticed at the Holiday Luncheon, if present, I am originally from France, but now reside in California since 1996. I started in HP in 1972 in France in field support, and then moved to Boeblingen, Germany for three years, before moving three years to Singapore in 1975 to start the Service organization for HP when the sales office opened there.

I got married in Singapore to my wife Yoke Ping before returning to France where we stayed for 18 years. Our two daughters are born there; while in France, I was the European Support Training Manager.

In 1996, I got a transfer to the USA to become the World Wide Customer Hardware Support Training Manager. Had different jobs over the years, all related to customer support before retiring from HP in August 2012, after 40 years at HP on three continents.

My eldest daughter lives in San Diego and is a scientist developing solutions for medicine of the future, using DNA analysis to adapt treatments to each patient. The youngest works in Redwood Shores in 'retirement financial services' (IRA...).

Holiday Luncheon: Thanks everyone for a very successful Holiday luncheon. Thanks to the volunteers who organized it and thanks to the participants for contributing to its success by bringing their memories and their warmth to the event. We got 188 participants, and I got some positive feedback after the lunch, but don't hesitate to let me or others on the Board know if you have suggestions for improvements. I know I have one year to try to improve my speech for easier understanding especially at the back of the room. See [Page 4](#) for a recap and photos of this event.

Spring Fling: You will find more information and the flyer on [Page 15](#). Please reserve the date of March 16, and we hope to see you there and make it another successful event.

Picnic: We are still looking for some volunteers to organize and lead this event in early June. Please let me know if you can help as the more people in the team the lighter the load for everyone.

Golf: The Golf activities resume in March, see [Page 17](#) for the March flyer and [Page 19](#) for 2015 details. There are places for golfers of all abilities. Contact Phil Smith at smithphil06@gmail.com if interested.

HPREC Financial: I am sure you didn't memorize all the data I gave in the lunch, so there is an article on [Page 3](#) from **Gordon Mullin**, our treasurer, with the financial highlights for FY2014. Please have a look to see how the Club is managing the finances.

Let me wish you a very Happy New Year 2015.

Welcome Aboard! *By John Weidert, Membership Chair*



Happy New Year and welcome to 2015 and a year of fun and adventure with your fellow members of HPREC. I would like to extend a warm welcome to the following **NEW** members who have joined our Club during November: **Pamela Morgan Holt, Michael P. Doering, Rose Merryman, Betsy Riccomini, Nancy Gates and Richard Ridley.**

Membership Drive *By John Weidert, Membership Chair*

The Club's leadership team has worked on process improvements which will allow us to improve our operating efficiency in material that we send and receive from you.

We now have 335 members who have signed up to receive an email when the newsletter has been posted online rather than being mailed a paper copy, and we are hoping that more of you will continue to sign up for that this year. Some members ask if they can receive the actual newsletter attached to the email, or in pdf format, but these options cause big delays and some download issues for some members, depending on their equipment and service. We opt to continue to send you the link to the newsletter's location on our actual Club website. Please see Carol's Corner on [Page 7](#) for instructions on how to sign up for receiving the email.

We implemented an online membership renewal process this past year and of the 1293 active members, 245 of you renewed your membership online, and about a dozen new members joined by way of our online process. We are hoping that more of you take advantage of this as well as we get into the dues renewal process starting in the September time period. Our membership ended the fiscal year at 1293, and we are working on our plans for 2015.

There is a high probability that each of you knows at least one other eligible person who could join our Club. The benefits are many, and the cost is very low. Remember, eligibility to join requires only a minimum of 10 years with HP and/or Agilent, and members can live anywhere.

To help all of us in our recruiting efforts, use our **INFORMATIVE BROCHURE** highlighting the key activities and benefits that come with being a member of HPREC. This brochure is available on the www.hpretirees.org/hprec website. Click HPREC Brochure under **JOIN, RENEW, UPDATE** to access the tri-fold brochure. Please print out some copies and give them to your HP, Agilent or Keysight retiree friends. Or, if you would like hardcopies sent to you, send an email to our HPREC Membership Chair **John Weidert** at bamembership@hprec.org.



HPREC NEWS January 2015

Editorial Staff:
John McGowan
Carol Nakamoto
Betsy Riccomini
Marialis Seehorn

**To submit articles or
contact the Editor, email:**
HPREC_News@yahoo.com

Contents of This Issue

Page 1 ...President's Message	Page 13 ...SF Symphony Open Rehearsal flyer
Page 2 ...Welcome Aboard! Membership Drive	Page 14 ...Newsies at Orpheum flyer
Page 3 ...Financial Rpt. & Help Wanted	Page 15 ...Spring Fling flyer
Page 4 ...HPREC 2014 Holiday Luncheon	Page 16 ...Harley Farms Goat Dairy flyer
Page 5 ...Travel Talk	Page 17 ...Golf Tournament flyer
Page 6 ...HP Update & First Tech Update	Page 18 ...2015 HP Garage Tours flyer
Page 7 ...Carol's Corner	Page 19 ...Monthly Activities
Page 9 ...Upcoming--One-page Reference	Page 20 ...Hiking Schedule
Page 10 ...HPARV Volunteer Ops	Page 21 ...Bill & Dave CGC Recap
Page 11 ...Synopsis Science Fair	Page 22 ...HPARV Volunteer News
Page 12 ...Iceland Tour + Webinar	Page 24 ...Hiking News
	Page 25 ...Sympathy

To view newsletters online (in color!) visit www.hpretirees.org/hprec

HPREC, P.O. Box 86, Mountain View, CA 94042-0086

Membership Drive (continued)



Members! You Can Win a Gift Certificates!

To encourage participation, HPREC offers **TWO \$50 GIFT CERTIFICATES** to be awarded at the HPREC Holiday Luncheon in December 2015. Here's how you can qualify for the drawing. Each person you encourage to join HPREC (with dues paid) will put your name in the drawing pool. Bring in more than one member, and you will have your name added to the pool an additional time. Bring in three new paid members and get three chances to win. There is no limit to how many paid members you can bring in and increase your chance of winning a certificate (only one winning certificate per member).

All entries from November 1, 2014 through October 31, 2015 (end of our fiscal year) are eligible. New members should write your name on their enrollment form for you to qualify. (If you have already referred new members who have joined and paid this year, just let John Weidert know.) All members of the Club are eligible to win (except the membership chair). If you have questions or comments, please send an email to John Weidert: bamembership@hprec.org.

So, let's go on a recruiting binge and increase our membership level!

You will be doing the new member and the Club a real favor.

Financial Summary Report *By Gordon Mullin, Treasurer*



As **Bernard Bruand** reported at our Holiday Luncheon and Annual Meeting, the Club's fiscal year-end financial statement indicates that our income for the year was a little under **\$18,500** and our expenses were about **\$19,300** for a net loss of roughly **\$800**. The loss was covered by savings accumulated and maintained by the Club over the past 20 years. Our regular monthly activities (golf, hiking, bowling) and travel were self-supporting in 2014, in accordance with policies established by the Board of Directors. Our membership has declined slightly, but was helped in part by a recruiting effort at the HP Retiree Benefit Fair in Palo Alto in October.

Newsletter costs were close to budget and are roughly equal to our total dues income at \$15/member per year. We have outsourced the printing and mailing of our newsletters to FedEx Office, and their costs are lower than when we produced these ourselves. Costs for just four of our primary services (newsletters, directory, liability insurance, website hosting) were approximately **\$17,500**. The Board has elected to continue subsidizing the three major annual "events" at low levels to keep the costs down for our members, given a healthy carryover from prior years. Our remaining miscellaneous expenses were slightly under budget. Members with questions about the finances of the Club are welcome to contact me or one of the other Officers or Board members.

Help Wanted! Opportunities Within HPREC

Newsletter Editor/Coordinator - for the Club's bi-monthly newsletter (published in the odd months). The newsletter team has been together for several years and works very well together. If you have solid MS Word and reasonable writing skills, and like to work collaboratively in a team environment, then contact Paula Hoelker-williams at phoelkerwilliams@yahoo.com to learn more.

Golf Chair/Program Manager - plan, organize and handle administration for the HPREC monthly golf outings (low-key "tournaments" from March through October). This is Phil Smith's last year as the chair. Learn the ropes during 2015 and take it on as of 2016. If you want to know more, contact Phil at smithphil06@gmail.com. Someone needs to step up in order to keep this program going as a fun element of HPREC past 2015.

HPREC 2014 Holiday Luncheon *By John McGowan, Vice President*



Nearly 200 members of HPREC and their guests gathered in Santa Clara December 8 for the Club's Annual Holiday Luncheon. David's Restaurant Banquet Center, across from the new San Francisco 49ers Levi's Stadium, was our location again, and they provided another excellent meal. Special thanks to co-chairs **Pat Fausett** and **Jo-Ann Butler** for their work to organize and provide services at the event, and for many other volunteers who helped out with check-in, photography, decorations and prizes. Among

the many helpers, we should recognize **Homer Wong, Blanca Guerrero, Gordon Mullin, John Weidert, Phil Smith, Chris Gandel, Paula Hoelker-williams** and **Elizabeth Shen**. David and Jean Ebrahimoun, the owners of David's, also deserve thanks for their outstanding management of the event. We still hope to return for future events, though they are threatened by the City of Santa Clara's ongoing plan to turn the land over to the 49ers and Joe Montana for redevelopment.

Once again, we declined to provide a guest speaker, and the feedback is clear that the attendees were not at all disappointed in having more time to socialize. Finally, thanks to HP as well for their contribution of 75th Anniversary pens and coffee mugs. The Club continued the tradition of providing See's candy, and again included several large gift bags of Ghirardelli chocolates. Gift card winners for sponsoring new members went to **Judy Tieger** and **Joyce Bertozzi**. The See's and Ghirardelli candy winners have probably all resumed their healthy eating habits by now.



Elizabeth Shen with Co-Chairs Pat Fausett and Jo-Ann Butler



Nancy Savage, Robin Riccardi and Sandy Lawson.



Marialis Seehorn, Kathy Hall and Judy Sullivan.

HPREC 2014 Holiday Luncheon (continued)



Rhonda Louie, Faith Seal & guests ready for main course.



Former HP site nurses reminisce at luncheon.

Travel Talk *By Pat Fausett*

We are looking forward to an exciting year for our adventures here and abroad.
A few gentle reminders from your Travel Committee:

1. Sign up for trips and tours as soon as you get your newsletter and feel you can attend an event. We had many people sign up too late for the 49ers Levi's Stadium Tour. We had 120 members attend. Additionally, we have had to cancel trips (Golden Gate Fields) because we had too few meet the registration deadline with our transportation partners or the venue.
2. Read all the information on the flyer, then call if you have questions. Many times the calls could be avoided had the entire flyer been read. Also, keep a copy of the flyer if you are signing up!
3. *Newsies* and *Open Rehearsal* in February still have openings! Sign up now.
4. **HPREC and Cruise Planners present Inspiring Iceland Webinar**

This webinar is intended to share trip information with HPREC members and friends,
both those committed to the Iceland trip and those that might be interested in going on an extended trip.

Collette Webinars (webinars@gocollette.com) has invited you to join a webinar on Wednesday, February 4, 2015 from 3 to 3:30pm PST to learn more about the Iceland Land Tour - September 20 through 28, 2015 (see flyer on [Page 12](#)).

To add this Webinar to your Outlook calendar, click on this link:

<https://www2.gotomeeting.com/synchOutlook?wid=260039090&uid=105698143>

To Join the Webinar on Wednesday, February 4, 2015:

1. Click on this link to join the webinar: <https://www2.gotomeeting.com/pjoin/260039090/105698143>
This link should not be shared with others; it is unique to you. **Webinar ID: 260-039-090**
2. Choose one of the following audio options:
TO USE YOUR COMPUTER'S AUDIO: When the webinar begins, you will be connected to audio using your computer's microphone and speakers (VOIP). A headset is recommended. **-- OR --**
TO USE YOUR TELEPHONE: If you prefer to use your phone, you must select "Use Telephone" after joining the webinar and call **1-480-297-0021**. When instructed enter Access Code: 309-761-286, and when instructed, enter the Audio PIN shown to you after joining the webinar.

HAPPY NEW YEAR FROM YOUR TRAVEL COMMITTEE!!!!

HP Update *By Carol Nakamoto*

HP Speaker at Spring Fling Luncheon

Homer Wong has arranged for a guest speaker from HP Labs to attend our Spring Fling Luncheon in March. He will be sharing news on their latest endeavor, **The Machine**, the next generation of computing. Should be fascinating!

HP Split

You can follow news announcements in several ways:

HP Home Page - www.hp.com – scroll near bottom of page and click on **News** or **Investor Relations**

HP Continuum (maintained by HP for retirees) - hp.alumniprogram.com/continuum/home - scroll down to the link where you can sign up for **HP's Investor Relations Newsletter** to receive timely news and/or click on **News** link when visiting this website at a time of your choosing. If you haven't set up a free account yet, do so, as there's lots of info.

Snapfish Center at HP – Palo Alto (formerly Digital Oasis Center)



HP has approved a process whereby HP retirees can access the Snapfish Center at Bldg. 20 in Palo Alto. The process to follow was documented in November's HPREC News issue.

A refresher: Snapfish is owned by HP and provides discounted products (photos, calendars, mugs, mouse pads, posters, and more) to HP retirees. These are available online at www.snapfish.com at a discounted price. Some products, primarily photos, can be printed at the Center in Palo Alto for free.

First Tech Update *Submitted by Carol Nakamoto*

First Tech Federal Credit Union will be hosting a monthly webinar on topics of interest to many. All sessions are at the same time, 12 Noon Pacific Time. The registration link is always the same, and will update to new topic beginning of each month (so registration for the retirement planning session should open on February 2).

January 27 **Budgeting - Beating the Bottom Line**

Everyone has a budget. The trick is to stick to it and live a healthier financial life. Join us at our budgeting webinar and financial goal setting professionals will show you how.

February 24 **Retirement Planning - Keys to a Successful Retirement**

A confident financial future begins with a thoughtful roadmap. Learn how goal planning and monitoring can help increase your chances for success.

Go to www.firsttechfed.com/financialwebinar and register (early or just before event):

1. Click "register" link on top left-hand side, next to Event status.
2. Complete registration form and submit.
3. Receive a detailed email with event instructions, including Webex link to attend.
4. Mark your calendar with date and time, and SAVE the email.
5. 10 minutes prior to the seminar start time, open the invitation email and click "Click Here" link to attend.

Any questions, refer to the credit union's website above, and correspondence from them if you are a member.

LATEST – Updates, new info from last newsletter.

www.hpretirees.org/hprec (Our Club's website, maintained by HPREC volunteers)

Your Tech Team continues to be busy at work expanding the Club's online capabilities, and we have another **new** feature to introduce!

Spring Fling Luncheon: SIGN UP and PAY ONLINE!

To sign up and pay online for the Spring Fling Luncheon, go to our Club's website (above),

1. click on **COMING EVENTS**
2. scroll to **Spring Fling** (March)
3. click on **Sign Up and Pay Online**
4. complete the requested information

This feature will also be in place for this year's Picnic and Holiday Luncheon.

Of course, those who wish to pay by mail may still do so - fill out the sign-up form on the flyer in this newsletter and mail in with your check.

www.hp.com/retiree - (Maintained by HP for retirees)

Information provided by Agilent and Keysight has been added to the website under the **Contacts** tab on the home page, for both Contact and Change of Address information. You may find it in an alphabetical listing along with HP data.

BASICS – As a reminder, you can find the BASICS (for new members/refreshers) in three places:

- Online at the Club website, click on "Website Introduction" link
- In the front pages of your annual Club Directory (mailed to your homes every February; new online features will be included in the 2015 update)
- In your Membership Welcome Packet if you recently joined the Club



Passwords:

Program	URL	Username	Password
HP (News, Benefits and Stay Connected)	www.hp.com/retiree	Username and passwords are not shown in the online newsletter. See the printed Club Directory for them.	
Bay Area Employee Programs (Discounts)	www.bayarea.hpway.org		
HP Branded Merchandise	www.hpstore.com		
Passport Unlimited (dining discounts)	www.bayarea.hpway.org		
Online HPREC Member Info Updates form (<i>new</i>) (Note: password is case sensitive, includes a hyphen, and numbers refer to the year HP was founded)	www.hpretirees.org/hprec/		

www.hpretirees.org/hprec - HPREC

Passwords are not shown in the online newsletter for security reasons. They are communicated in the:

- Club Directory (annual; updated with this info in February 2015 Club Directory)

- Paper version of the newsletter
- Bi-monthly email from me notifying you that the newsletter has been posted online
(see * in Email Newsletter Notice section below to sign up, select **second** button - “Be notified via an email...”)
- Welcome Packet when you first joined the Club

Email Newsletter Notice, Paper Newsletter or Both? It’s Your Choice!

* Want to **stop** having the paper newsletter mailed to your home and read the **color** version online? Want to receive an email from me letting you know when the newsletter is posted online? Go to www.hpretirees.org/hprec, click on “Member Info Updates”, select **Email/Newsletter Notification Preferences**, fill in your email address, and select your preferred option(s) for what types of communication you want to receive from the Club. *We do not send the newsletter as an attachment due to some members’ incompatible platforms.*

www.bayarea.hpway.org - Bay Area Employee Programs (Maintained by HP affiliated volunteers; *additional* offerings available at HP Store and online...ex: Marine World is available online only)

- ***Here are time-sensitive, discounted online offerings:***
 - SAP Center – **Harlem Globetrotters** (Jan 9, 16, 17); **Disney on Ice** (Feb 18-25)
 - Orpheum, Curran & Golden Gate Theaters – **Blithe Spirit** w/Angela Lansbury (Jan 20-Feb 1)
 - San Francisco Symphony **Valentine’s Day** event (Feb 14)
- ***HP Employee Store (Palo Alto HQ, in Lobby 20D, no special access needed. Store hours: Wed-Fri 11:30-1:30 except HP holidays): Examples of discounted offerings available for pick-up:***
Disneyland, Great America, AMC/Cinemark movie passes, Pier 39, Roaring Camp Railroad, California Academy of Sciences, Gilroy Gardens, LegoLand, Sea World, See’s Candy 1 lb. certificates, and more.
- ***Online (above website: see password section for access):*** Marine World, Roaring Camp, Universal Studios, and Winchester Mystery House tickets are available online only.

www.hp.com/retiree (Maintained by **HP**)

HP’s site for all information provided to retirees. Find information on benefits, retiree clubs, vendor discounts, HP news and much more. Also, HP Continuum is listed under “Stay Connected” tab on this site’s home page.

hp.alumniprogram.com/login - HP Continuum (Maintained by **HP**)

Remember to keep checking the HP Continuum website for news, discounts, benefit updates, retiree profiles, and more. Set up a password, log in, and check it periodically. *Some overlapping material with above site.*

www.hpalumni.org - HP Alumni Association (Maintained by volunteer former HP retirees and employees)

Free to join. There’s LOTS of helpful information (historical stock prices, legacy company listings, topic chats/Q&A, etc). Recent Benefits Forum discussion topics:

- Open Enrollment
- Transitioning to Medicare
- HP Split Announcement

Contact **Carol Nakamoto** at CarolsCorner@hpretirees.org or call me (phone number in directory) if you need help.

Upcoming Activities, Events, Trips and Volunteer Opportunities

This table combines information about all the Club's social gatherings into an easy-to-use table that is sorted by date. Scan this list, check off the ones you want to attend, and be sure to add them to your calendar.

Events that are not free of charge have a \$ in the "Type" column. All others are free, or at least potentially free if you don't participate in the carpool.

Type	Date and Time	Description and Location	Sign Up Deadline
Hike	Jan. 21, 10 – 11:30 am	Stanford University Sculptures Lite Hike	Just come! *
Trip Info	Feb. 4, 3 – 3:30 pm Webinar: Iceland Land Tour	Opportunity to ask questions about Sep. 20-28 trip (deadline to sign up Mar. 21)	* or see Page 5 and Page 12
Help	Feb. 9, 10:45 am – 2 pm	Sunnyvale Community Services	Feb. 2, * or see Page 10
Bowl \$	Feb. 9, 11 am – 12:30 pm	Homestead Lanes, Cupertino	Just come! * or see Page 19
Hike	Feb. 10, 10 am – 2 pm	Coyote Hills East Bay Regional Park	Just come! * or see Page 20
Trip \$	Feb. 12, 7:30 am – 4:30 pm	SF Symphony Open Rehearsal; depart from Vallco Shopping Mall, Cupertino	Not specified, * or see Page 13
Hike	Feb. 18, 10 – 11:30 am	Bedwell Bayfront Park in Menlo Park	Just come! * or see Page 20
Trip \$	Feb. 25, 6:30 – 11:30 pm Optional TGIF @ 4:30 pm	<i>Newsies</i> ; depart from Vallco Shopping Mall, Cupertino	Feb. 1, * or see Page 14
Bowl \$	Mar. 9, 11 am – 12:30 pm	Homestead Lanes, Cupertino	Just come! * or see Page 19
Hike	Mar. 10, 10 am – 1 pm	Picchetti Ranch Open Space Preserve	Just come! * or see Page 20
Help	Mar. 10 and/or 11	Synopsys Science & Technology Championship, San Jose	Not specified, * or see Page 11
Luncheon \$	Mar. 16, 11 am – 2 pm	Spring Fling, Mariani's Inn and Restaurant, Santa Clara	\$30 by Mar. 4, \$35 after * or see Page 15
Hike	Mar. 18, 10 – 12:30 am	Rancho San Antonio Deer Hollow Farm	Just come! * or see Page 20
Trip \$	Mar. 19, 9:30 am – 4 pm	Harley Farms Goat Dairy; depart from Vallco Shopping Mall, Cupertino	Not specified * or see Page 16
Golf \$	Mar. 19, 10 am – 4 pm	Sunnyvale Golf Course	Mar. 14, * or see Page 17
Help	Mar. 24, 9:30 am – 12:30 pm	La Comida Dining Room, Palo Alto	Mar. 17, * or see Page 10
Bowl \$	Apr. 13, 11 am – 12:30 pm	Homestead Lanes, Cupertino	Just come! * or see Page 19
Golf \$	Apr. 16, 10 am – 4 pm	San Jose Muni	Apr. 11, *
Tour	May 7, 9:30 – 11:30 am	HP Garage, Palo Alto	* or see Page 18
Golf \$	May 21, 10 am – 4 pm	Spring Valley, Milpitas	May 16, *
Golf \$	Jun. 11, 10 am – 4 pm (second Thursday due to schedule conflict)	Santa Clara Golf & Tennis Club -	Jun. 6, *
Golf \$	Jul. 16, 10 am – 4 pm	Sunnyvale Golf Course	Jul. 11, *
Golf \$	Aug. 20, 10 am – 4 pm	San Jose Muni	Aug. 15, *
Golf \$	Sep. 17, 10 am – 4 pm	Spring Valley, Milpitas	Sep. 12, *
Trip \$	Sep. 20-28	Iceland Land Tour	Mar. 21, * or see Page 12
Golf \$	Sep. 21, 11 am – 7 pm	Bill & Dave Charity Golf Classic Peninsula Golf & Country Club, San Mateo	Watch for details later in 2015
Tour	Nov. 5, 9:30 – 11:30 am	HP Garage, Palo Alto	* or see Page 18

* Online Events Calendar: Go to www.hp retirees.org/hprec and click on Coming Events.

HPARV “Done in a Day” Volunteer Opportunities

Join your fellow HP/Agilent/Keysight retirees at the following events:



Sunnyvale Community Services

Sunnyvale Community Services is an independent, nonprofit emergency assistance agency. Their mission is to prevent homelessness and hunger for low-income families and seniors facing temporary crises. They provide financial aid, food, and other support that prevents larger problems with more expensive solutions. We can help. Come join us as we sort and bag produce and groceries and distribute them to SCS clients.

Date & Time: **Monday, February 9, 2015, 10:45 am – 2 pm**

Place: Sunnyvale Community Services 725 Kifer Road, Sunnyvale, CA 94086

Directions: From Highway 101, take the Fair Oaks Avenue exit and go south on North Fair Oaks Avenue.
After 0.8 miles, continue left onto North Wolfe Road.
After 0.9 miles, turn right on East Kifer Road.
Sunnyvale Community Services will be in .01 of a mile on your right.
Please use street parking -- lot is for client use only.

RSVP: hp.agilent.volunteers@hotmail.com or call **Marialis Seehorn** at 408-244-7556
by February 2

More information: <http://www.svcommunityservices.org/index.html>



La Comida Dining Room (New Volunteer Opportunity)

La Comida Dining Room in Palo Alto plays invaluable roles in ensuring seniors receive a nutritious and affordable meal, as well as enjoy opportunities to socialize and get connected to activities and services that promote healthy aging. Come join us as we will help set up the dining room, greet guests, serve food and refreshments, and assist with cleanup to make this meal special for local seniors while they dine.

Date & Time: **Tuesday, March 24, 2015, 9:30 am – 12:30 pm**

Place: La Comida Dining Room - Located in Avenidas, 450 Bryant Street, Palo Alto, CA 94301

Directions: La Comida Dining Room is just off University Avenue. Google for best directions.

RSVP: hp.agilent.volunteers@hotmail.com or call **Marialis Seehorn** at 408-244-7556
by Tuesday, March 17.

More information: <http://www.lacomida.org/Pages/default.aspx>

Volunteers Needed To Help With Science Fair



(Science background not needed except for judging.)

HPARV invites you to join with many other volunteers in this year's **Synopsys Science & Technology Championship.**

About 1000 students will be participating in the fair, and there are many ways you can help either day. We need more volunteers, so if you can, please help us!

What: County-wide regional science fair for students in grades 6-12

Where: San Jose McEnery Convention Center, South Hall, San Jose

When: **Tuesday, March 10, 2015** – Student check-in and set-up
(Lunch provided)
8 am – 6 pm (or 8 am – 12 noon or 12 noon – 6 pm)

Wednesday, March 11, 2015 – Judging day
(Lunch provided)

11 am – 6 pm (we need a few volunteers around 9 am to help set up judges)



What's Needed?

1. General volunteers

- * **Tuesday:** Help students through the registration process, help them find their assigned space to set up their projects, run errands, etc.
- * **Wednesday:** Help register judges, monitor the hall during judging, etc.
Tasks can be sitting, walking or standing. Indicate if you have a preference.

Send an email with your name, phone number and time availability to:

Rose Mary Brodbeck rm_brodbeck@comcast.net or call Rose Mary at 650-968-4269.

2. Judges:

If you have a degree in science, technology, engineering or math and are interested in judging, go to www.science-fair.org, then go to Judges, and, under Category Judges, click on Category Judging Registration to register as a judge. If you have any questions, please send an email to judging@science-fair.org.

For further information, see the Science Fair website at: www.science-fair.org.

Previous volunteers at this event say it's fun and rewarding.

Please volunteer. You'll be glad you did! And we need you!



HPREC & COLLETTE TOUR OF INSPIRING ICELAND

SAVE \$200

PER PERSON IF BOOKED (AND SPACE IS AVAILABLE) BY MARCH 21, 2015

SPECIAL ANNOUNCEMENT

HPREC Trip to Iceland Webinar -
Your opportunity to ask questions
about this great trip

Date: February 4, 2015
Time: 3 - 3:30 pm

See Travel Talk on Page 5 for
webinar access info

September 20 - September 28, 2015

9 Days • 10 Meals

7 Breakfasts • 3 Dinners

Highlights: Reykjavik, Golden Circle,
Thingvellir National Park, Snæfellsnes
Peninsula, Puffin Cruise, Blue Lagoon

Rates Per Person

DON'T MISS OUT! BOOK NOW!

**Double \$4,714, Single \$5,264,
Triple \$4,684**

REGULAR RATES

**Double \$4,914, Single \$5,464,
Triple \$4,884**

***Included in Price:** Cancellation Waiver and
Insurance of \$215 per person, Round Trip Air
from San Francisco Intl Airport, Air Taxes and
Fees/Surcharges, Hotel Transfers



Click for Additional Info: **HPREC Tour**

Please contact **Donald Higgins** at 408-736-1918 or donald1090@comcast.net or **Debbie Lum**, Accredited
Cruise Counselor, at 408-773-8332 or dlum@cruiseplanners.com for more information and to book your trip.

HPREC GOES TO THE SAN FRANCISCO SYMPHONY OPEN REHEARSAL

THURSDAY, FEBRUARY 12, 2015

PETER SERKIN PLAYS MOZART, AN OPEN REHEARSAL

Peter Serkin joins Herbert Blomstedt for Mozart's Piano Concerto No. 19
Concert also features Sibelius' exhilarating Second Symphony, a Blomstedt specialty

Katharine Hanrahan Open Rehearsal is a working rehearsal

The pieces rehearsed are at the conductor's discretion

Cost: \$49 per person

After the Rehearsal, enjoy lunch, on your own, and shopping at:

The Ferry Plaza Farmers Market

A California certified farmers market



Symphony rehearsal, 10 am until finished. Ferry Plaza Farmer's Market shopping until 2 pm.

Depart from Vallco Shopping Mall, Cupertino at 7:30 am and return to Vallco at 4:30 pm.

For additional information or questions, please contact Trip Leaders during normal business hours of 9 am to 5 pm, Monday – Friday. Exceptions for emergencies only, please.

Trip Leaders: Don Higgins 408-736-1918 donald1090@comcast.net or
Pat Fausett 650-941-7063 pat.fausett@sbcglobal.net

-----cut here-----

EVENT: SF Symphony Rehearsal - Feb 12, 2015

_____ person(s) @ \$49 = \$_____ Total
(PLEASE WRITE ONE CHECK PER EVENT)

PLEASE PRINT NAMES:

Member Name _____ Phone () _____

Spouse/Guest Name _____ Phone () _____

(Please CIRCLE if spouse or guest—is this person a member?...YES ...NO)

Emergency Contact _____ Phone () _____ Member

Emergency Contact _____ Phone () _____ Guest

SEND RESERVATION FORM TO: HPREC, P.O. Box 86, Mountain View, CA 94042-0086

EMAIL ADDRESS FOR TRIP CONFIRMATION: _____ (Please Print)

EVENT: Newsies - Feb 25, 2015

_____ person(s) @ \$98 per person by Feb 1, 2015 = \$_____ Total
(PLEASE WRITE ONE CHECK PER EVENT)

PLEASE PRINT NAMES:

Member Name _____ Phone () _____

Spouse/Guest Name _____ Phone () _____

(Please CIRCLE if spouse or guest—is this person a member? ...YES ...NO)

Emergency Contact _____ Phone () _____ Member

Emergency Contact _____ Phone () _____ Guest

SEND RESERVATION FORM TO: HPREC, P.O. Box 86, Mountain View, CA 94042-0086

EMAIL ADDRESS FOR TRIP CONFIRMATION: _____ (Please Print)

I/we will attend a no-host dinner at TGIF's at 4:30 pm. YES _____ NO _____

-----cut here-----



Wednesday, February 25, 2015

**Orpheum Theatre in
San Francisco**

\$98 per person

Limited to 44 people

**Cut-off date for reservations:
February 1, 2015.**

Bus leaves Vallco Shopping Mall in Cupertino at 6:30 pm

and returns to Vallco at 11:30 pm.

No-host dinner: TGIF at Vallco at 4:30 pm.

We will reserve a place at TGIF for those members who let us know they will join us by checking YES on the reservation form above.

For additional information or questions, please contact the Trip Leaders during normal business hours of 9 am to 5 pm Monday – Friday. Exceptions for emergencies only, please.

Trip Leaders: Pat Fausett 650-941-7063 pat.fausett@sbcglobal.net or
Vera Robertson 650-961-5554 write2vera@earthlink.net



ANNUAL **HPREC SPRING FLING** LUNCHEON

Monday, March 16, 2015
Doors open at 11 am; Luncheon at 12 noon

Mariani's Inn and Restaurant, 2500 El Camino Real, Santa Clara

Choice of Entrée:

- **Corned Beef & Cabbage**
- **Filet of Sole Almandine**
- **Vegetarian Pasta Primavera**
- **Pasticcio Roasted Pork Tenderloin**

Served with fresh garden salad, French roll & butter, dessert,
and freshly brewed coffee or tea

GUEST SPEAKER: John Sontag

Vice President and Director of Systems Research at HP Labs

Cost: by March 4 - \$30 per person, or after March 5 / at the door - \$35 per person.

For further information contact Harold Kaye 408-257-9629 or kaye_harold@yahoo.com

You can sign up & pay online at www.hpretirees.org/hprec or complete the form below.

-----cut here-----

EVENT: Spring Fling 2015

_____ person(s) @ \$30 / person through Mar. 4 = \$_____ Total

_____ person(s) @ \$35 / person after Mar. 5 = \$_____ Total

(PLEASE WRITE ONE CHECK PER EVENT)

PLEASE PRINT NAMES:

Member Name _____

Phone () _____

Spouse/Guest Name _____

Phone () _____

(Please CIRCLE if spouse or guest—is this person a member? ...YES ...NO)

Emergency Contact _____

Phone () _____ Member

Emergency Contact _____

Phone () _____ Guest

SEND RESERVATION FORM & CHECK TO: HPREC, P.O. Box 86, Mountain View, CA 94042-0086

Choice of entrée: _____ Corned Beef & Cabbage

_____ Pasticcio Roasted Pork Tenderloin

(Specify number) _____ Filet of Sole Almandine

_____ Vegetarian Pasta Primavera

EVENT: Harley Farms Goat Dairy - **Mar 19, 2015**

_____ person(s) @ \$75 per person = \$_____ Total
(PLEASE WRITE ONE CHECK PER EVENT)

PLEASE PRINT NAMES:

Member Name _____

Phone () _____

Spouse/Guest Name _____

Phone () _____

(Please **CIRCLE** if spouse or guest—is this person a member? ...YES ...NO)

Emergency Contact _____

Phone () _____

Member

Emergency Contact _____

Phone () _____

Guest

SEND RESERVATION FORM & CHECK TO: HPREC, P.O. Box 86, Mountain View, CA 94042-0086

EMAIL ADDRESS FOR TRIP CONFIRMATION: _____ (Please Print)

-----cut here-----



Baby Goats and Cheese

Harley Farms Goat Dairy & Duarte's Tavern

Thursday, March 19, 2015

\$75 per person

Join HPREC for a visit to Harley Farms Goat Dairy and Cheese Shop in Pescadero on March 19, 2015. The two hour hands-on tour starts with the goat nursery. Wear sturdy shoes for the tour and bring a small cooler if you wish to purchase the goat cheese from the store.



Lunch will be at Duarte's Tavern, famous since 1894 for cioppino, artichoke dishes and olallieberry pie.

The menu will be choice of a soup (*includes the famous artichoke soup*) and a sandwich with fries. Olallieberry pie is an extra at \$6.50. Details will be provided after you sign up.



Bus leaves Vallco parking lot behind Penney's in Cupertino at 9:30 am and returns to Vallco at 4 pm.

For additional information or questions, please contact the trip leaders during normal business hours of 9 am to 5 pm Monday-Friday. Exceptions for emergencies only, please.

Trip Leaders:

Gail Eatock

408 446-0428

taichats2@att.net

or

Pat Fausett

650 941-7093

pat.fausett@sbcgglobal.net

HPREC Golf Tournament in March



Notes:

- Each HPREC member may invite one guest.
- Pay for golf carts (\$14/person) in the pro shop at check-in.
- For further information, call **Phil Smith** at 408-749-1656.

Sunnyvale Golf Course

605 Macara Ave

Sunnyvale, CA 94085

408-738-3666

Date: **Thursday, March 19, 2015**

Starting Time: **10 am**

Reservations due by: Saturday, March 14

Cost: Seniors (60+) **\$29**; Non-seniors **\$39**
(includes \$2 prize fund)

Make check(s) payable to HPREC GOLF
and mail with this form to:

HPREC Golf,
c/o Phil Smith
802 Beaverton Court
Sunnyvale, CA 94087

✂ -----cut here-----

HPREC GOLF RESERVATION

Sunnyvale, March 19, 2015

NAME	CART?	EMAIL**

** Only if not on file

EVENT: HP Garage Tour

_____ person(s)

Please indicate your preference of dates (1=1st choice; 2=2nd choice):

_____ **May 7, 2015**

_____ **November 5, 2015**

PLEASE PRINT NAMES:

Member Name _____ Phone () _____

Spouse/Guest Name _____ Phone () _____

(Please CIRCLE if spouse or guest—is this person a member? ...YES...NO)

Emergency Contact _____ Phone () _____ Member

Emergency Contact _____ Phone () _____ Guest

SEND RESERVATION FORM TO: HPREC, P.O. Box 86, Mountain View, CA 94042-0086

EMAIL ADDRESS FOR TRIP CONFIRMATION: _____ (Please Print)

-----cut here-----

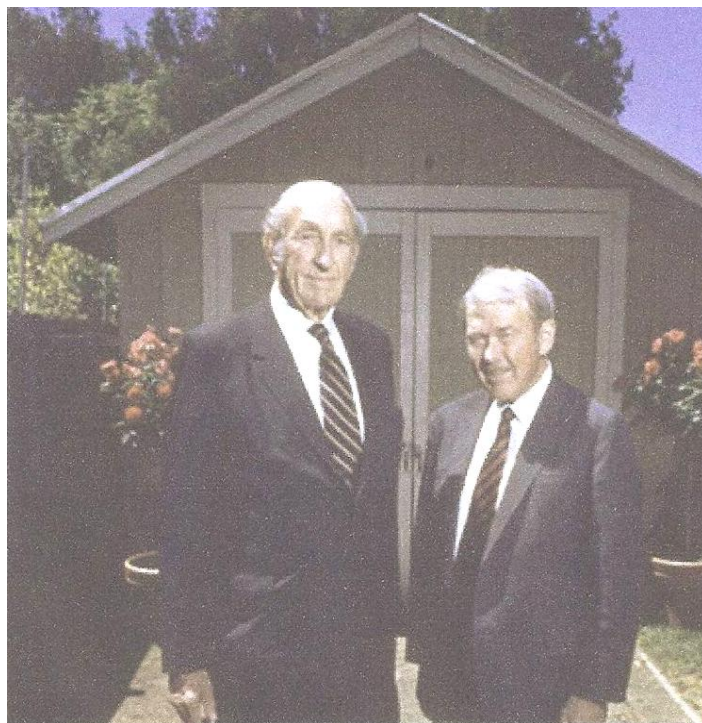
A STEP BACK IN TIME!

Two **FREE** tours of the HP Garage
will be conducted in
2015: May 7 and November 5,
and are limited to
10 Club members/guests per tour.

Sign up using the form below.

Tours start at 10 am and
last approximately 90 minutes.

We will meet in Palo Alto at 9:30 am in the
parking area by Building 20's defunct carwash
(off Hanover near the top of the hill).



For additional information or questions, please contact Trip Leaders between
9 am and 5 pm, Monday – Friday. Exceptions for emergencies only, please.

Trip Leaders: Gail Eatock 408-446-0428 taichats2@att.net or
Pat Fausett 650-941-7063 pat.fausett@sbcglobal.net

HPREC Monthly Activities *By Lidia Donez*

Golf *By Phil Smith*



Happy New Year! On review of the HPREC's 2014 golf season, we kept pace with the average attendance over the past six years. We averaged 22 players per tournament for the eight scheduled tournaments, although the mix showed more men and fewer ladies playing. We also awarded over 400 golf balls over the season, consistent with prior years. And, as has been the case in prior years, we lost some regular players, but gained some new ones to compensate, so it turned out to be a 'normal' year.

The final event of the season is the announcement at the Holiday Luncheon of the highly coveted Golfer of the Year award and the \$50 prize that goes with it. For 2014, the honors went to **Shelia Highe** and **Rhonda Louie** for the Ladies Flight, and to **Ben Lee** for the Men's Flight. Shelia and Rhonda finished in a tie, and the co-winners have now each won for the third time over the past five years, with Rhonda winning for the third consecutive year. Ben Lee won the honors for the first time and has been a regular player with the "Club" for the past several years. Congratulations to Shelia, Rhonda and Ben for their great play throughout the year.

With the 2015 HPREC golf season fast approaching, we continue to look for a person(s) to take over the stewardship of the golf tournaments. I gave notice this past year that I would be leaving the Golf Chair as of the end of 2014. As no one stepped forward to take on the responsibility for the HPREC golf tournaments (although one player did agree to fill in if there was a logistical conflict, and I appreciate that), we still need a new Chair for the tournaments. To keep golf as an HPREC activity, I'll agree to keep it going for the 2015 season, but not beyond 2015. So, if HPREC is to continue to offer the golf tournaments as we have over the past decades, we need someone to step forward and take over as chair for golf. I'll help in the transition, but someone needs to volunteer to keep the tournaments going beyond 2015.

Here's the schedule for 2015 – all tournaments will be on the 3rd Thursday of the month, with the first tee time at 10 am:

Sunnyvale - March 19

San Jose Muni - April 16

Spring Valley - May 21

Santa Clara – June 11* (Due to schedule conflict, June's tournament will be on the second Thursday!)

Sunnyvale - July 16

San Jose Muni - August 20

Spring Valley - September 17

Los Lagos - October 15

Please calendar the golf schedule for 2015, and prepare for your run at the highly coveted \$50 Golfer of the Year award. The formula is simple: just win the most golf ball prizes over the course of the year. The Golf flyer for the first tournament at Sunnyvale is on [Page 17](#), so be sure to sign up for the good times of HPREC Golf tournament play, and get a jump on that \$50 grand prize. See you there!

Tours of the HP Garage

Look for the flyer on [Page 18](#) about upcoming opportunities to visit true HP history. Two FREE tours of the HP Garage will be conducted on May 7 and November 5 in 2015, and are limited to 10 Club members/guests per tour. It is a one and one half-hour tour of the HP Garage in Palo Alto, HP's first business site.

Bowling for fun! *By Carol Nakamoto*



Come join us at Homestead Lanes at 20990 Homestead Road, Cupertino. It's the 2nd Monday of each month. Price is \$9/hr or \$5.50/game (we bowl 2 games; depending on number of people bowling, our cost may vary between \$11-13.50). Shoe rental is separate. The next few bowling events are **Feb. 9, Mar. 9 and April 13 from 11 am - 12:30 pm.**

If interested, contact Bernard Bruand at ba.president@hpretirees.org or find his phone number in the Club Directory.

Hikes in February and March *By Jim Holl*



Coyote Hills East Bay Regional Park	Tues. Feb. 10, 10 am Rainout: Feb. 17, 10 am	Cost:\$5 parking and \$5 bridge toll per car, \$4 for carpool drivers	Leader: John McCabe 650-328-3472
<p>Meet at the Usual Carpool Location* (see Page 21) or drive there directly, meet us at Coyote Hills East Bay Regional Park parking area. To get there from the peninsula, take Highway 84 across the Dumbarton Bridge to Paseo Padre Parkway in Fremont. Go about 1.2 miles north on Paseo Padre, then turn left onto Patterson Ranch Road. Go through the entry kiosk, where there is a \$5 parking fee, and then park at the visitor center. The hike should start about 10:30. This East Bay Regional Park adjoins the San Francisco Bay National Wildlife Refuge and offers trails in marshes, grasslands and hills with killer views. It is dotted with Ohlone Indian sites. Our route will be about five miles, and we will climb some strenuous hills. The area is exposed to bay winds. We should see some raptors, shorebirds and a few migratory bird species. Bring water, sunscreen, lunch, and \$4 plus your share of the \$10 bridge & entrance fees. Bathrooms are available at the beginning and end of the hike.</p> <p>Length: About 5 miles. Duration: 4 hours. Difficulty: Moderate - we will go up and down some rather strenuous hills. No Dogs (too many restrictions). Not wheelchair accessible (too steep).</p>			
Bedwell Bayfront Park in Menlo Park Lite Hike	Wed. Feb. 18, 10 am We go rain or shine unless it is pouring.	Free	Leaders: Eileen and Gary Ruppel 650 575-4264
<p>Meet at the large paved parking lot near the restrooms at Bedwell Bayfront Park in Menlo Park. Take 101 to the CA-84 E/Marsh Road exit. Take Marsh Road east .8 miles to the park entrance. The restrooms are straight ahead just a little beyond the park entrance. There is ample parking.</p> <p>The relatively flat 2.3-mile trail around the perimeter of Bedwell Bayfront Park is part of the San Francisco Bay Trail. The park's 160 acres are surrounded on three sides by the Don Edwards San Francisco Bay National Wildlife Refuge.</p> <p>Length: 2.3 miles. Duration: About 1.5 hours. Difficulty: Easy. Dogs OK. Wheelchair accessible.</p>			
Picchetti Ranch Open Space Preserve	Tues. Mar. 10, 10 am Rainout: Mar. 17, 10 am	Free	Leaders: Jade and Chris Simonson 650 969-3450
<p>No carpools, please meet at Picchetti Ranch. The Preserve is located in the Cupertino foothills. Exit Foothill Expressway from Highway 280, travel 3.5 miles southwest (toward the mountains) on Foothill Boulevard/Stevens Canyon Road. Turn right on Montebello Road. The Preserve is 0.5 miles up Montebello Road on the left.</p> <p>Picchetti Ranch offers 308 acres with wine-making history. The Picchetti family emigrated from Italy to California in the 1870s and operated a winery here for 72 years. Hikers have the option of visiting the current winery building (open 11:00 am to 5:00 pm) after the hike. The current complex is listed on the National Register of Historic Places and the Santa Clara County Heritage Resource Inventory.</p> <p>Our hike starts out on the Zinfandel Trail. In about half a mile, the Orchard Loop Trail will circle the hill to our left. The loop brings us back to the Zinfandel Trail. Continuing on the Zinfandel Trail takes us into the Stevens Creek County Park where we will enjoy our lunch at the picnic area. This is essentially an out-and-back hike on the Zinfandel Trail. On our way back to the winery, we will take in another short loop around Bear Meadow Trail to enjoy a high point along the Vista Trail. Our total elevation gain is about 950 feet.</p> <p>Facilities are available near the parking area and at our lunch stop. Please wear good hiking shoes and bring a stick if you have one. If the day is sunny, don't forget a hat and sunscreen.</p> <p>Length: About 4.5 miles. Duration: About 3 hours. Difficulty: Moderate. No dogs. Not wheelchair accessible.</p>			
Rancho San Antonio Deer Hollow Farm Lite Hike	Wed. Mar. 18, 10 am We go rain or shine unless it is pouring.	Free	Leader: Jim Holl 408-446-2963 408-528-5846 cell
<p>Meet at the northwest (main) parking lot at Rancho San Antonio County Park. Exit I-280 at the Foothill Boulevard exit, proceed south, and turn right onto Cristo Rey Drive. Continue for about 1 mile, veer right around a traffic circle, and turn left into the county park entrance. The main parking lot is located to the right and then down the hill. We will leave from the restroom area. The route to Deer Hollow Farm is paved or has paved alternatives. Deer and spring flowers should be plentiful. We will spend some time at Deer Hollow Farm, and we expect to see some newborn animals.</p> <p>Length: About 2.5 miles. Duration: 1.5 hours. Difficulty: Easy. No Dogs. Wheelchair accessible.</p>			

Hikes in February and March (continued)

* **The Usual Carpool Location** is the Enid Pearson Arastradero Preserve parking area. From I-280, exit on Page Mill Road and go SW for about half a mile. Turn right on Arastradero Road and go 1.2 miles. The parking area is on your right. Join your fellow hikers near the restrooms.

Hiking email List: Updates, specifics and reminders will go out to the “HPREC Hiking Distribution List” about one week prior to the hike. If you are not on that list, contact John McCabe (leonaandjohn@att.net).

Bill and Dave Charity Golf Classic *By John McCabe*

2014 was the 20th year for the Bill and Dave Charity Golf Classic and the most successful one ever. In those 20 years, the tournament has raised \$462,350 (\$625,850 with matching funds) for various aspects of the Lucile Packard Children’s Hospital. Last year’s campaign raised a record \$33,000 for the Teen Health Van. This year, we exceeded that amount by over 20% for a total of \$40,000. Over the last 7 years, the money has gone to the Teen Health Van. The Van provides free expert care, custom-designed for high-risk youth ages 10-25 who rely exclusively on the Teen

Health Van for their medical care. Forty percent of the teens they serve were homeless during some portion of the last year. The impact can be best said by our primary contact at LPCH Teen Health Van: “While we were out on the green thanking the participants, I was able to mention something that I think is very important - the Bill and Dave Charity Golf Classic is our biggest and most successful community event. Furthermore, it is supporting a very important and unique program at the Hospital – the Teen Health Van – that is addressing issues and health needs in our community that are frequently overlooked or inadequately addressed.”

This is the last year that **Shelia Highe**, an HP retiree, will lead the effort (she will stay involved as part of the committee). Agilent retiree **Judy Owen** has taken on the leadership of the Bill and Dave Charity Golf Classic, and Judy and her team are actively planning the tournament for September 21, 2015 in San Mateo.



HPREC’s Shelia Highe presents a \$40,000 check to Seth Ammerman, MD, Medical Director of Mobile Adolescent Health Services at Lucile Packard Children’s Hospital Stanford.



HPARV Volunteer News

hp.agilent.volunteers@hotmail.com

Padua Dining Room *By John McCabe*

Volunteering at the Padua Dining Room is always rewarding. Doing so a few weeks before Thanksgiving was especially so. Eight HPREC volunteers did various tasks to create hot, delicious meals for people in the community. We cut up apples, strawberries, and oranges, and made fruit salad. We helped create frittatas that were very tasty. We served the meal and drinks to go with it.



Marsha Lee and Al Low serve the hot food.



Rose Mary Brodbeck and her daughter-in-law Angela cut frittatas into serving size pieces.



Pam Bishop and Bryan Lovegren set out more food for people to take home.



Keith Lee and Al Low cut up apples for the fruit salad.

Family Giving Tree Holiday Wish Drive *By Marialis Seehorn, photos by John McCabe*

Ho! Ho! Ho! Thanks to the efforts of some 16 HP and Agilent retirees (and guests) and the Family Giving Tree, many more needy kids and seniors will be enjoying presents this holiday season. Although it was really cold and wet outside the gift warehouse, the inside was warm with laughter and conversations between volunteers. We wrapped and tagged gifts of every kind and size -- some of which required a "wrapping strategy!" Then we teamed up in pairs to check off gifts and assure that all recipients would receive their first or second gift choice. The on-site "store" had an extensive inventory of toys and other gifts to be used as needed. All of the donated gifts were scheduled to be picked up by participating organizations for distribution to recipients.

One of the nicest surprises of the day was working alongside some HP employee volunteers. They made our day brighter by gifting some T-shirts and photo frames to our retiree crew. Thank you HP!



(L to R): Back Row: Sam Khoo, Carol Arnett, Jacqueline Durden (guest), June Edwards, Eileen Ruppel, Herbert Knoesel, Bryan Lovegren, and Mike Tada.

*Middle Row: Marialis Seehorn, Pam Khoo, Marsha Lee, and Van Tang.
Kneeling: Janet Junger, Ana Clark, John McCabe, and Marian Cochran (guest).*



Bryan Lovegren, June Edwards, and Jacqueline Durden (guest)



Sam and Pam Khoo



Marsha Lee, Mike Tada, and Janet Junger

Hiking News *Compiled by Gary Ruppel*

Monte Bello Open Space Reserve *By Jade Simonson (leader) with photo by John McCabe*

The weather cooperated with us today for a very pleasant, if windy, hike up to the Black Mountain summit at the Monte Bello OSP. We were rewarded with superb views of the valley to the east and typical California rolling hills with windswept grasslands marked by numerous deer trails to the west. Lunch was enjoyed in the shelter of the Black Mountain backpack campsite. On the return hike, John McCabe spotted and photographed a California newt, which is a member of the salamander family. Stevens Creek is a breeding area for this species.

Getting there: Take Page Mill Rd west for about 5 miles. Parking is on the left and restrooms are available. The Los Trancos OSP is just across the road and makes a nice hike as well.

(L-R): Jade Simonson, Eileen Ruppel, Susan Pretel, Janis Andrews, Jim Holl, Duncan Missimer, Bernard Bruand, Gary Ruppel, Chris Simonson, Mike Fischer, and John McCabe.



Japantown Lite Hike *By Eileen Ruppel (leader) with photo by John McCabe*

Shirley Kwan's magic umbrella delayed the threatening rain on Wednesday so that nine Lite Hikers could enjoy a dry, leisurely stroll around Japantown. San Jose has one of only three remaining Japantowns in the United States. Our hike



(L-R): John McCabe, Bryan Lovegren, Barbara Beebe, Carol Arnett, Janet Holl, Pat Musachia, Jim Holl, Shirley Kwan, and Eileen Ruppel.

was just under two miles in length and filled with history. We especially enjoyed the numerous granite benches which mark historic structures, people and events important to this community. Many of them include a game board for Go, chess or checkers, Sugoroku or Shogi.

When you visit, be sure to see the Issei Stone (a gift from San Jose's sister city, Okayama, Japan), the Nikkei Lantern which commemorates February 19, 1942 (the date Executive Order 9066 was signed), and the Issei Voices, a 36-foot granite monument etched with a timeline and words reflecting the values of the pioneers and their descendants.

If you go Thursday through Sunday, 12:00 – 4:00 pm, you can visit the Japanese American Museum of San Jose at 535 North 5th Street, San Jose.

Sawyer Camp Trail South *By John McCabe (leader)*

Twelve HPREC hikers took a break from their busy December schedules to hike along the south portion of Sawyer Camp Trail. The skies were very calm, particularly in the morning. This made Crystal Springs Reservoir look like glass. The paved trail provided the perfect place to hike after the substantial rain we had. We hiked 3.5 miles to the Jepson Laurel Tree, ate our lunch by it on picnic tables, and then hiked back along the Crystal Springs Reservoir and the Peninsula Watershed. The Jepson Laurel Tree is California's oldest and largest laurel tree; it is estimated to be over 600 years old.



The Sawyer Camp Trail is 6 miles long. You can begin your trek at either end and walk any portion of it. There are bathrooms at both ends and by the Jebson Laurel Tree. To start at the south end, take exit #36, Black Mountain / Hayne Road, off Hwy 280. Go west onto Golf Course Drive. Turn left onto Skyline Blvd and drive 1.3 miles. Park on the side of the road just before Crystal Springs Road.

(L-R): John McCabe, Janis Andrews, Duncan Missimer, Susan Pretel, Chris Simonson, Eileen Ruppel, Jade Simonson, Jim Holl, Jim Leising, Bernard Bruand, John Kwan, and Stan McCarthy.

Sanborn Skyline County Park Lite Hike *By Jim Holl (leader) with photo by Eileen Ruppel*

During a brief break in our rainy December weather, two hikers took a one-hour tour of this lushly wooded park. We met a newt, some rangers rebuilding a restroom and pretty much had the entire park to ourselves. The route chosen was 100% paved as the recent heavy rains made the intended use of the nature trail unworkable. Aubry Creek and one of its tributaries were running strong and made pleasant sounds as we hiked beside them. The picture was taken in the Peterson Redwood Grove.

If you want to try this hike yourself, Sanborn Skyline County Park is located on Sanborn Road. From Saratoga, proceed 2 miles west on Highway 9 to Sanborn Road. Turn left onto Sanborn Road, traveling 1 mile to the park entrance. The \$6 per car entrance fee may be purchased from a machine that takes cash or credit cards. Our route visited the Peterson Redwood Grove near the lower parking lot, the pond on lower Aubry Creek, the Youth Science Institute building, the campsite area including the Youth Campground, the RV Campground and circled the large meadow back to the lower parking area.



Eileen Ruppel & Jim Holl looking lonely.

Sympathy

By Blanca Guerrero

HPREC member Eunice Colwell, 92, of Port Aransas, TX passed away on May 4, 2014. Beloved mother of six daughters (five worked for Hewlett Packard), beloved grandmother to seven and beloved great-grandmother to thirteen. Eunice was a graduate of San Jose State University and worked for Hewlett-Packard for 24 years. She began her career in the Redwood building in Palo Alto, CA. She became a production line supervisor at Stanford Park Division, eventually transferring to Spokane, WA, where she set up a production line at the new site. She returned to Stanford Park to complete her employment before retiring. *(Submitted by Priscilla Casey, daughter)*

John Tillema, 78, of Escalon, CA passed away on Wednesday, July 23, 2014. He is survived by his wife, Edie Tillema, three sons and their wives, a fourth daughter-in-law who is the widow of his deceased son John, Jr., nine grandsons, and two granddaughters. A memorial service for John was held on Saturday, August 2, at First Christian Reformed Church. *(Submitted by Edie Tillema, HPREC member)*

Paul L. Knight, of Fremont, CA died in his Fremont home on October 17, 2014 from chronic lymphocytic leukemia. Born in Las Vegas, Nevada, Paul graduated from Scottsdale High School in Arizona. After his graduation from Occidental College in Los Angeles with a Bachelor of Science in Biology, Paul pursued science at higher levels, earning his PhD in Neurophysiology from the University of California San Francisco. Following his scientific research career, Paul worked for 18 years as an engineer at Hewlett-Packard. The son of Tui Ava Knight and Louis Wiener, Jr., Paul is survived by his wife, Charlotte, and sister, Valerie. *(Published in Inside Bay Area on Oct. 24, 2014)*

Joan R. Stivers, 81, of Mountain View, CA died peacefully at home on November 26, 2014 after a brief battle with brain cancer. Joan was born in Denver, Colorado on December 30, 1933 to F.B. "Eddie" Rankin and Lillian Rose Rankin. She attended South High School in Denver, and Colorado A&M in Fort Collins, where she met and married Jerry Stivers. She and Jerry had two children, and lived and worked all over the world. After returning to California, Joan settled in Mt. View and went to work for Hewlett-Packard, retiring from there in 1988. Joan is survived by her son Jeff, daughter Jonni, grandson Jeremy, granddaughter Jessica, sister Janet, niece Kathy, and son-in-law Beau. *(Published in San Jose Mercury News/San Mateo County Times on Dec. 10, 2014)*

Doris Irene Daniel, 86, formerly of Fremont, CA passed away on December 1, 2014, and reunited with her loving husband, Bob. Doris was born in Wallowa County, OR, to Roscoe and Gertrude Scott on April 3, 1928. Doris married and welcomed a son, Larry Eugene Anderson, in 1949, and then a daughter, Audrey Joyce Anderson, in 1950. In 1958, Doris, her husband, and children relocated to California and settled in Newark welcoming another daughter, Nancy Lynn Anderson. In 1966, she was hired at Hewlett Packard where she began in the Assembly area, moved into Quality Assurance, and then worked with engineers in Research & Development. The R&D team made components for the Apollo space program. Doris always made sure her family was well cared for despite the challenges of being a single mother. In 1976, she married Robert Daniel, the love of her life. They settled in Fremont, CA, where she lived until 2008. She retired from HP in 1980 and was able to ardently pursue her hobbies of gardening and sewing. Doris is survived by her three children, Larry (Susan) Anderson of Fremont, CA; Audrey (Ted) Debski of Somis, CA; and Nancy (Bryan) Horne of Livermore, CA. She also leaves behind her six grandchildren, Jeffrey and Kimberly Anderson, Stacey Saenz, Nicholas Brown, and Michelle and Cole Tarwater; four great-grandchildren; sister-in-law, Maxine (Arnold) Hahn; and many nieces and nephews. She was preceded in death by her parents, both sisters, and her husband Bob. *(Published in Inside Bay Area on Dec. 13, 2014)*

Fred C. Laccabue, 81, of Cupertino, CA passed away at home in Cupertino, CA, December 11, 2014, with his family at his side. Fred was born in Chicago, IL on May 26, 1933 to James Ronald Laccabue, Sr. and Mary Ann Gassi. Fred graduated from St. Mel High School and spent a semester at St. Mary's College, Winona, MN before attending the University of Illinois Urbana-Champaign, where he received a B.A. in Mathematics. Fred held management positions in many companies in the computer systems industry, including Fairchild/Schlumberger and Tandem/Compaq/HP, from where he retired as VP of HP's NonStop Systems Development in 2012. Devoted to his family, he is survived by his wife Michelle, their son Michael, mother Mary Ann, brother James Ronald, Jr., nieces and nephews, sharing a special bond with nephew and buddy, Jim, children Brenna, Julie, Fred Jr., Ronald, Steven, Susan, and Joseph, grandchildren and great-grandchildren. *(Published in San Jose Mercury News/San Mateo County Times on Dec. 19, 2014)*

Mae Minato, 87, of Cupertino, CA passed away suddenly in her home on December 4, 2014. She was born on July 6, 1927. A native of San Jose, she graduated from Heart Mountain High School in Wyoming, where she was relocated during World War II. She retired from Hewlett-Packard where she worked for over 20 years. She is survived by her sons, Dennis (Tina), and Alan (Lynn); grandchildren, Chris, and Melissa; and sisters, Grace Inouye, and Tomi Tanase. She was preceded in death by her brother, Ray Inouye; and sister, Ann Masuda. *(Published in San Jose Mercury News/San Mateo County Times on Dec. 21, 2014)*

To place a notice or provide information about HP retirees whom you know, please write to Blanca Guerrero, 1139 W Remington Dr., Sunnyvale, CA 94087 or email to bn.guerrero@NU-RIS.com.
