

HPREC NEWS



Agilent Technologies

Fun, friendship, service, memories for members of the Bay Area Hewlett-Packard Retired Employees Club, Inc.

NOVEMBER 2014

Issue: #97



HPREC President's Message *By John McGowan*

This newsletter will be the first since Agilent and Keysight have officially become independent companies, with the new Keysight Technologies stock being distributed on November 1. While many of us thought that would be enough corporate changes for 2014, HP announced in October that it would be splitting into two separate companies, HP Inc., and Hewlett-Packard Enterprise. The Club expects to maintain positive relationships with both companies, and we will update our website and Club directory as more information becomes available.



This is my final President's article, as **Bernard Bruand** assumes the President's position effective November 1 and will be writing the messages starting in January. There have been several other changes at the Board level: **Henry Sanchez** had to withdraw as a Board nominee at the last minute due to health concerns; and **Carol Nakamoto** has been appointed to fill an unexpired term for several more years. Carol has stayed active since her last Board term, continuing as a volunteer member of our Tech Team and Communications Committee, serving as our Web Communicator, an Associate Editor of our newsletter, and continuing a relationship with HP's HR organization as well as an HP women's network. We are delighted to have her back on the Board. We welcome **Oscar Lombardi** to the Board. **Betsy Riccomini** has agreed to join the newsletter team replacing **Lynn Cortes** who is "retiring" as the other Associate Editor after 13 years. The entire Board thanks **Lynn** for her years of assistance and support! We are still looking for volunteers: someone to serve as a final editor for the newsletter, and someone to schedule, handle registrations for, and scoring for our monthly golf tournaments which occur March through October. With **Homer Wong's** return to work at HP, we need a Chair for the 2015 Picnic. **Carol Nakamoto** will return to the role of HP liaison.

Here's the final reminder for the HPREC Holiday Luncheon in Santa Clara at David's Banquet Center across from the new San Francisco 49ers Levi's Stadium. The luncheon is Monday, December 8, starting at 11 am - see flyer on [Page 9](#). Last year, we had a great time and great meal at this location, and I hope you'll sign up to join us this year.

In 2015, we are looking forward to adding online registration and payment for the Club's three major events: Spring Fling, Picnic, and Holiday Luncheon. The new online membership (join, renew, and update your member info) is working as designed. We plan to upgrade our Club's email system to enable more effective email messaging to our members. With the long publishing cycle for our newsletter, email will become a timely means of communicating with our membership, and we hope you'll set your preferences to allow emails from the Club. The new system will also mean the end of our "hidden email directory"; once it's gone you will need to contact members using the information in the Club directory to request their email address. The Board's Communications Committee will be working to define the policies for when and how to use email messaging to the membership, and will also be refreshing the processes for posting and updating items on our web pages. Finally, when the new Club directories arrive in February 2015, please use care in discarding (shred, please) or archiving the old one. We include non-public information (addresses/phone numbers) and would not like to see that information misused. The Club has established a secure Dropbox account for online storage/archival of our official records (much thanks to **Bernard**), and we are reducing the paper file folders we physically store today.

Finally, my sincere thanks to the Board members and volunteers who keep this Club going, and to a great group of members! I wish you all a healthy and happy holiday season and a most prosperous 2015!

Welcome Aboard! *By John Weidert, Membership Chair*



HPREC would like to welcome the following new members who have joined our Club between August 29 through October 30, 2014: **Paula Collins, Mary Jane (MJ) Genochio, Kurt Gressman, James (Jim) Morrison, Karen Seward, Sherry Sisson, and Leonard (Len) Weisberg.** Thank you for joining HPREC.

Membership Drive *By John Weidert, Membership Chair*

Just as our sponsoring companies have been going through some changes, your Club has also been implementing changes to help make our processes smoother for you. A new system of online dues renewal has been implemented with this current dues renewal cycle to make it possible for you to renew your membership online. To date, we have had 75 members renew their dues by way of our new online process.

In addition, **Carol Nakamoto** and members of the Tech Team put together a program to help us to clear up some of our old email address files (that included non-members, as we used to allow them to add their email address). To date, we have had 15 new members join our Club by way of this process. Your Club has been requesting that you give us your email address, which will make it easier for us to communicate with you. So far, we have added 15 new email addresses to our database. PLEASE REMEMBER to notify HPREC if you change your mailing address, email address, name or primary contact phone number.

As we enter our new 2015 Fiscal Year, our HPREC Membership drive will continue. The benefits of joining are many and the cost is very low. Remember, eligibility to join requires only a minimum of 10 years with HP, Agilent Technologies or Keysight Technologies. Members can live anywhere.

Please use our **INFORMATIVE BROCHURE** highlighting the key activities and benefits that come with being a member of HPREC. This brochure is available at www.hpretirees.org/hprec. Click on **HPREC Brochure** under Club Information to access the tri-fold brochure. Please print out some copies and give them to your HP, Agilent or Keysight retiree friends. Or, if you would like hardcopies sent to you, send an email to our HPREC Membership Chair **John Weidert** at jweidert2@gmail.com.



HPREC NEWS November 2014

Editorial Staff:

Lynn Cortes

Paula Hoelker-williams

Carol Nakamoto

Marialis Seehorn

To submit articles or
contact the Editor, email:
HPREC_News@yahoo.com

Contents of this Issue

[Page 1](#)...President's Message

[Page 2](#)...Welcome Aboard!

Membership Drive

Contents

[Page 3](#)...HP Update: HP Split,

Open Enrollment &

Snapfish Center at HP

[Page 5](#)...Carol's Corner

[Page 7](#)...Upcoming-One-page Reference

[Page 8](#)...HPARV Volunteer Ops

[Page 9](#)...Annual Holiday Luncheon flyer

[Page 10](#)...SF Symphony Open Rehearsal flyer

[Page 11](#)...Newsies at Orpheum flyer

[Page 12](#)...2015 HP Garage Tours flyer

[Page 13](#)...Iceland Land Tour flyer

[Page 14](#)...Monthly Activities

[Page 15](#)...Hiking Schedule

[Page 16](#)...HPARV Volunteer News

[Page 19](#)...Hiking News

[Page 21](#)...Sympathy

[Page 22](#)...#2 Best Value as HPREC Member

To view newsletters online (in color!) visit www.hpretirees.org/hprec.

HPREC, P.O. Box 86, Mountain View, CA 94042-0086

Membership Drive (continued)



Members! Members! Members!
Win! Win! Win!
Gift Certificates!



Remember that HPREC will award **TWO \$50 GIFT CERTIFICATES** at the HPREC Holiday Luncheon on December 8 at David's Banquet Center, Santa Clara, CA. You have to be present to win. We want to see you all there and don't leave early before we have the drawing. Here's how you can qualify for the drawing. Each person you encouraged to join HPREC (with dues paid) will put your name in the drawing pool. Bring in two new paid members and get two chances to win. Bring in three new paid members and get three chances to win. There is no limit to how many paid members you can bring in and increase your chance of winning a certificate. (If you have already referred new members who have joined and paid this year, just let John Weidert know.) All entries from November 1, 2013 through October 31, 2014 (end of our fiscal year), are eligible for the December 8 drawing.

New members who you encourage to join the Club between November 1, 2014 and October 31, 2015 will entitle you to be entered in the 2015 drawing at next year's Holiday Luncheon. They should write your name on their enrollment forms for you to qualify. All members of the Club are eligible to win (except the membership chair). One winning certificate per member.

HP Update *By Carol Nakamoto*

After terming out in 2009, I returned to the Board in October. The Board approved me to replace **Dan Abouav**, who resigned in August; I will serve out the remainder of his term. **Homer Wong**, our outgoing HP Liaison, returned to work at HP in September, so I will be reassuming that role which I held from 2001-2009. On to the good stuff.

HP Split

THIS MESSAGE WAS PROVIDED BY HP FOR RETIREES on Oct 6, 2014 and was emailed to Club members who have shared their email with the Club. This is repeated for those of you who we couldn't reach via email on the announcement day.

Tracy Keogh
Executive Vice President, Human Resources
Hewlett-Packard

October 6, 2014

To: HP Retirees

As an important member of our HP family, I want to reach out to you regarding today's announcement that HP will separate into two new industry-leading public companies.

One company will do business as Hewlett-Packard Enterprise and will focus on providing enterprise customers with secure, market-leading infrastructure, software, and services that help them run traditional IT better, and seamlessly move to the New Style of IT. Meg will be President and Chief Executive Officer of Hewlett-Packard Enterprise and Cathie Lesjak will be Chief Financial Officer.

The other company will do business as HP Inc. and will form a market-leading personal systems and printing company. Dion Weisler will lead HP Inc. as Chief Executive Officer. Meg will take on the role of Chairman of the Board for HP Inc.

We believe this is a logical next step in our turnaround that will unlock value and accelerates the progress we've made to date. By separating, we are creating two, healthy, independent companies with strong financials and innovation roadmaps,

full of talented employees.

I know you probably have some questions about what this announcement means for you, so let me provide some clarity around a few things. First, there will be no changes to your healthcare and wellbeing benefits plan for 2015. Enrollment will continue as planned. Second, if you own HP stock, you will receive shares for both Hewlett Packard Enterprise and HP Inc. upon completion of the separation by the end of fiscal 2015. Third, HP leadership and I are committed to making sure our retirees are carefully considered and kept informed throughout the separation process. We will continue to post information on the HP Continuum retiree website as well as www.hpannouncement.com.

I'm optimistic about our future and look forward to your continued involvement.

Best, Tracy

You can follow any HP announcements in several ways:

HP Home page - www.hp.com – scroll near bottom of page and click on **News** or **Investor Relations**

HP Continuum (maintained by HP for retirees) - <http://hp.alumniprogram.com/continuum/home> - scroll down to the link where you can sign up for **HP's Investor Relations Newsletter** to receive timely news and/or click on **News** link when visiting this website at a time of your choosing. If you haven't set up a free account yet, do so, as there's lots of info.

Open Enrollment for HP

By now, you should have heard from HP on the dates for Open Enrollment, which are November 3-21, 2014. If you have not received information, please contact the HP Benefits Center at 1-800-890-3100, choose "Health & Benefits", provide the requested information, and ask for a representative.



Snapfish Center at HP – Palo Alto (formerly Digital Oasis Center)

Earlier this year, HP transitioned the Snapfish Center in Bldg 20-C level to a self-managed photo center. I have been working with the Global IT Mgr to find a solution to continue to allow HP retirees access to the Center that is acceptable to HP Security. I just received approval to allow us to follow the process outlined below.

A refresher: Snapfish is owned by HP and provides discounted products (photos, calendars, mugs, mouse pads, posters, and more) to HP retirees. These are available online at www.snapfish.com at a discounted price. Some products, primarily photos, can be printed at the Center in Palo Alto for free.

Approved Process: An HP employee who works right next to the Snapfish Center has agreed to let us contact her when we wish to visit the Center. Here's the only way this will work:

Contact: Margie Lindke **IN ADVANCE** of your visit:

650-857-2190 office

margie.lindke@hp.com

Hours of access for retirees: Monday – Thursday between 8:00 am and 1:30 pm (not Friday's). Knock on Snapfish Center (Level C, Page Mill side of building) outside glass windows and Margie will let you in the security door, then the Snapfish Center. Keep in mind that lunchtime may be busier with employees so I suggest you target the **morning** hours.

Bring: your Gold Badge for proper identification (or your HP Retiree Insurance card as backup).

Tips:

- Call or email enough ahead (at least day before) so that you get a confirmation from Margie that she will be available. Take her phone number with you, in case she doesn't notice you at the window when you arrive.
- Be mindful that she is working and we are visiting, so strive to be on time. If you change your plans, please let Margie know.

- Be respectful of HP Security's rules regarding unescorted access. Margie is letting you into the Snapfish Center only. You are not to wander around the building. If you need to use the restroom while there, I suggest you do so on your way OUT, so as not to disturb Margie in having to let you in the Center multiple times.
- Abide by the daily/monthly printing limits so as not to violate the Standards of Business Conduct policy. Greeting cards 25 max per day/month, 4x6 photos max 50 per day/month, 5x7 photos 5/day and 10/month, 8x10 photos and Holiday Printables & Kits 5 per day/month.
- Those of us who have visited the Center before it transitioned to self-managed will have an easier time at using the services...keep in mind there's no one to assist you. Give it a try!

Carol's Corner **HP-related Retiree Websites**

... for HP, Agilent and Keysight retirees

By Carol Nakamoto, HPREC Web Communicator

LATEST – Updates, new info from last newsletter.

www.hpretirees.org/hprec (Our Club's website, maintained by HPREC volunteers)

By now, if we had your correct email address, you received an email from our Membership Chairperson, John Weidert, inviting you to participate in our new online membership renewal and dues payment option.

You also received the normal paper Dues Invoice (in case you chose to renew the paper-way) and the Ballot for new Board members that was to be mailed back. **Thanks** for renewing, especially online!

RENEWING YOUR CLUB MEMBERSHIP (for FY15)

Hopefully, you have renewed by now, which reduces our time and cost to follow up. If it's still an action item, please refer to the Club's website home page, click on RENEW MEMBERSHIP. Appreciate your cooperation.

Renew by Nov 26 to save the Club postage in sending out Dues Invoice Reminders in December.

Renew by Dec 31 to ensure you are sent a Club Directory to your home in February.

UPDATING YOUR CONTACT INFO - OR - MAILING PREFERENCES – *new and easy!*

At any time, if you wish to add or update your email address or update other member info, here's how:

1. Go to our Club's website www.hpretirees.org/hprec.
2. Click on "Member Info Updates" and complete the appropriate fields on the Update form. It will be sent to the Membership team who will make the changes for you. *You're welcome!* ☺
3. We eliminated the online email directory where a member could look someone up (security reasons).

www.bayarea.hpway.org - **Bay Area Employee Programs** (Maintained by HP affiliated volunteers; *additional* offerings available at store and online (ex: Marine World is available online only))

- ***Examples of discounted offerings available for pick-up in the HP Store (Palo Alto HQ, Lobby 20D):***
Disneyland, Great America, AMC movie passes, Pier 39, Roaring Camp Railroad, Winchester Mystery House, Calif Academy of Sciences, See's Candy certificates, and more.
- ***Here are time-sensitive, discounted online offerings:***
 - SAP Center (formerly HP Pavilion) - ***Walking with Dinosaurs*** (Dec 25-28)
 - SAP Center – ***Harlem Globetrotters*** (Jan 9, 16, 17)
 - San Francisco Symphony ***Christmas, New Year's Eve, Valentine's Day*** events
 - Orpheum, Curran & Golden Gate Theaters – ***I Love Lucy*** (Nov 11-13), ***Kinky Boots*** (Dec 2-28), ***ELF*** (Dec 12-28), ***Blithe Spirit*** w/Angela Lansbury (Jan 20-Feb 1, 2015)



www.hp.com/retiree (Maintained by **HP**)

HP's site for all information provided to retirees. Find information on benefits, retiree clubs, vendor discounts, HP news and much more. Also, HP Continuum is listed under "Stay Connected" tab on this site's home page.

www.hp.alumniprogram.com/continuum/home - **HP Continuum** (Maintained by **HP**)

Remember to keep checking the HP Continuum website for news, discounts, benefit updates, retiree profiles, and more. Set up a password, log in, and check it periodically. *Some overlapping material with above site.*

www.hp alumni.org - **HP Alumni Association** (Maintained by volunteer former HP retirees and employees)

Free to join. LOTS of helpful information (historical stock prices, legacy company listings, etc). Recent Benefits Forum discussion topics:

- Open Enrollment
- Transitioning to Medicare
- HP Split Announcement

BASICS – As a reminder, you can find the BASICS (for new members/refreshers) in three places:

- Online at the Club website, click on "Website Introduction" link
- In the front pages of your annual Club Directory (*mailed to your homes every February; new online features will be included in the 2015 update.*)
- In your Membership Welcome Packet if you recently joined the Club

Passwords: They are not shown in the online newsletter for security reasons. They are communicated in the:

- Club Directory (annual)
- Paper version of the newsletter
- Bi-monthly email from me notifying you that the newsletter has been posted online (see * below Email Newsletter Notice, select **second** button - "Be notified via an email...")
- Welcome Packet when you first joined the Club



Program	URL	Username	Password
HP (News, Benefits and Stay Connected)	www.hp.com/retiree	Username and passwords are not shown in the online newsletter. See the printed Club Directory for them.	
Bay Area Employee Programs (Discounts)	www.bayarea.hpway.org		
HP Branded Merchandise	www.hpstore.com		
Passport Unlimited (dining discounts)	www.bayarea.hpway.org		
Online HPREC Member Info Updates form (new) (Note: password is case sensitive, includes a hyphen, and numbers refer to 1939, the year HP was founded)	www.hpretirees.org/hprec/		

Email Newsletter Notice, Paper Newsletter or Both? It's Your Choice!

* Want to **stop** having the paper newsletter mailed to your home and read the **color** version online? Go to www.hpretirees.org/hprec, click on "Member Info Updates", select Email/Newsletter Notification Preferences, fill in your email address, and then select your preferred option(s) for what types of communication you want to receive from the Club. We do not send the newsletter as an attachment due to some members' incompatible platforms.

Contact **Carol Nakamoto** at CarolsCorner@hpretirees.org or call me (phone number in directory) if you need help.

Upcoming Activities, Events, Trips and Volunteer Opportunities

This table combines information about all the Club's social gatherings into an easy-to-use table that is sorted by date. Scan this list, check off the ones you want to attend, and be sure to add them to your calendar.

Events that are not free of charge have a \$ in the "Type" column. All others are free, or at least potentially free if you don't participate in the carpool.

Type	Date and Time --- 2014	Description and Location	Sign-up Deadline
Bowl \$	Nov. 10, 11 am – 12:30 pm	Homestead Lanes, Cupertino	Just come! * or see Page 14
Hike	Nov. 11, 10 am – 3 pm	Monte Bello Open Space Preserve	Just come! *
Trip \$	Nov. 13, 9:45 am	49ers Levi's Stadium Tour, Santa Clara	Maxed out!
Hike	Nov. 19, 10 – 11:30 am	Japantown in San Jose Lite Hike	Just come! *
Luncheon \$	Dec. 8, 11 am – 2 pm	Holiday Luncheon, David's Banquet Center, Santa Clara	\$30 by Nov. 26 \$35 by Dec. 3, * or see Page 9
Hike	Dec. 9, 10 am – 1 pm	Sawyer Camp Trail, South	Just come! * or see Page 15
Help	Dec. 15, 9 am – 12 pm	Family Giving Tree Warehouse, (Location to be determined)	Dec. 8, * or see Page 8
Hike	Dec. 17, 10 – 11:15 am	Sanborn County Park Lite Hike	Just come! * or see Page 15
Date and Time --- 2015			
Help	Jan. 7, 9 am – 12 pm	RAFT Volunteer & Processing Center, Sunnyvale	Dec. 31, * or see Page 8
Bowl \$	Jan. 12, 11 am – 12:30 pm	Homestead Lanes, Cupertino	Just come! * or see Page 14
Hike	Jan. 13, 10 am – 2 pm	Palo Alto Baylands from Charleston Slough	Just come! * or see Page 15
Hike	Jan. 21, 10 – 11:30 am	Stanford University Sculptures Lite Hike	Just come! * or see Page 15
Trip \$	Feb. 12, 7:30 am – 4:30 pm	SF Symphony Open Rehearsal; depart from Vallco Shopping Mall, Cupertino	Not specified, * or see Page 10
Trip \$	Feb. 25, 6:30 – 11:30 pm Optional TGIF @ 4:30 pm	<i>Newsies</i> ; depart from Vallco Shopping Mall, Cupertino	Jan. 10, * or see Page 11
Tour	May 7, 9:30 – 11:30 am	HP Garage, Palo Alto	* or see Page 12
Trip \$	Sep. 20-28	Land Tour of Iceland	Mar. 21, * or see Page 13
Tour	Nov. 5, 9:30 – 11:30 am	HP Garage, Palo Alto	* or see Page 12

* Online Events Calendar: Go to www.hpretirees.org/hprec and click on Coming Events.

HPARV “Done in a Day” Volunteer Opportunities

Join your fellow HP/Agilent/Keysight retirees at the following events:



Family Giving Tree Holiday Gift Drive

Participating in the Family Giving Tree Holiday Wish Drive is always a highlight of the year for HP, Agilent, and Keysight retiree volunteers. This “Done-in-a-Day” project will only take a few hours, but will mean a lot. We will have only a limited number of spots, which will be filled on a first-come first-serve basis, so respond quickly. We should have the location soon after you receive this HPREC newsletter. (You can refer to the Club’s website under “Volunteer in your Community”.)

We always have a great time! Wear layers and comfy shoes. We are never sure what temperatures to expect, but it's usually COLD! The warehouse floor could be hard cement, and chairs will most likely be limited.

- Date & Time: **Monday, December 15, 2014, 9 am – 12 pm**
- Place: Family Giving Tree Warehouse (Location to be determined)
- Directions: To get the location and to RSVP, contact:
hp.agilent.volunteers@hotmail.com or call **John McCabe** at 650-328-3472
- RSVP: by Monday, **December 8**
- More information: <http://www.familygivingtree.org/index.php>
-



RAFT, Resource Area for Teaching, is a nonprofit organization that believes hands-on teaching is the best way for teachers to teach and students to learn. They provide creative hands-on activity kits, educational resources, workshops and inexpensive materials (Hewlett-Packard is one of their best contributors) to enrich pre K-12 education and community group programs. Their goal is to assist teachers, nonprofits and community groups by providing materials and ideas for day-to-day teaching and for supporting professional growth. Volunteering at RAFT is always fun! And you get to make great things that will enrich the lives of students.

- Date & Time: **Wednesday, January 7, 2015, 9 am – 12 pm**
- Place: RAFT Volunteer & Processing Center, 1160 Kern Avenue, Sunnyvale, CA 94085
- RSVP: hp.agilent.volunteers@hotmail.com or call **John McCabe** at 650-328-3472 by Wednesday, **December 31**
- Directions and more information: <http://www.raftbayarea.org/location-sobrato-center>

HPREC GOES TO THE SAN FRANCISCO SYMPHONY OPEN REHEARSAL

THURSDAY, FEBRUARY 12, 2015

PETER SERKIN PLAYS MOZART, AN OPEN REHEARSAL

Peter Serkin joins Herbert Blomstedt for Mozart's Piano Concerto No. 19
Concert also features Sibelius' exhilarating Second Symphony, a Blomstedt speciality

Katherin Hanrahan Open Rehearsal is a working rehearsal

The pieces rehearsed are at the conductor's discretion

Cost: \$49 per person

After the Rehearsal, enjoy lunch, on your own, and shopping at:

The Ferry Plaza Farmers Market

A California certified farmers market



Symphony rehearsal, 10 am until finished. Ferry Plaza Farmer's Market shopping until 2 pm.

Depart from Vallco Shopping Mall, Cupertino at 7:30 am and return to Vallco at 4:30 pm.

For additional information or questions, please contact Trip Leaders during normal business hours of 9 am to 5 pm, Monday – Friday. Exceptions for emergencies only, please.

Trip Leaders: Don Higgins 408-736-1918 donald1090@comcast.net or
Pat Fausett 650-941-7063 pat.fausett@sbcglobal.net

-----cut here-----

EVENT: SF Symphony Rehearsal - Feb 12, 2015

_____ person(s) @ \$49 = \$_____ Total
(PLEASE WRITE ONE CHECK PER EVENT)

PLEASE PRINT NAMES:

Member Name _____ Phone () _____
Spouse/Guest Name _____ Phone () _____

(Please CIRCLE if spouse or guest—is this person a member?...YES ...NO)

Emergency Contact _____ Phone () _____ Member
Emergency Contact _____ Phone () _____ Guest

SEND RESERVATION FORM TO: HPREC, P.O. Box 86, Mountain View, CA 94042-0086

EMAIL ADDRESS FOR TRIP CONFIRMATION: _____ (Please Print)

EVENT: Newsies - Feb 25, 2015

_____ person(s) @ \$98 per person by Jan 10, 2015 = \$_____ Total
(PLEASE WRITE ONE CHECK PER EVENT)

PLEASE PRINT NAMES:

Member Name _____ Phone () _____

Spouse/Guest Name _____ Phone () _____

(Please CIRCLE if spouse or guest—is this person a member? ...YES ...NO)

Emergency Contact _____ Phone () _____ Member

Emergency Contact _____ Phone () _____ Guest

SEND RESERVATION FORM TO: HPREC, P.O. Box 86, Mountain View, CA 94042-0086

EMAIL ADDRESS FOR TRIP CONFIRMATION: _____ (Please Print)

I/we will attend a no-host dinner at TGIF's at 4:30 pm. YES _____ NO _____

-----cut here-----



Wednesday, February 25, 2015

**Orpheum Theatre in
San Francisco**

\$98 per person

Limited to 44 people

**Cut-off date for reservations:
January 10, 2015.**

Bus leaves Vallco Shopping Mall in Cupertino at 6:30 pm

and returns to Vallco at 11:30 pm.

No-host dinner: TGIF at Vallco at 4:30 pm.

We will reserve a place at TGIF for those members who let us know they will join us by checking YES on the reservation form above.

For additional information or questions, please contact the Trip Leaders during normal business hours of 9 am to 5 pm Monday – Friday. Exceptions for emergencies only, please.

Trip Leaders: Pat Fausett 650-941-7063 pat.fausett@sbcglobal.net or
Vera Robertson 650-961-5554 write2vera@earthlink.net

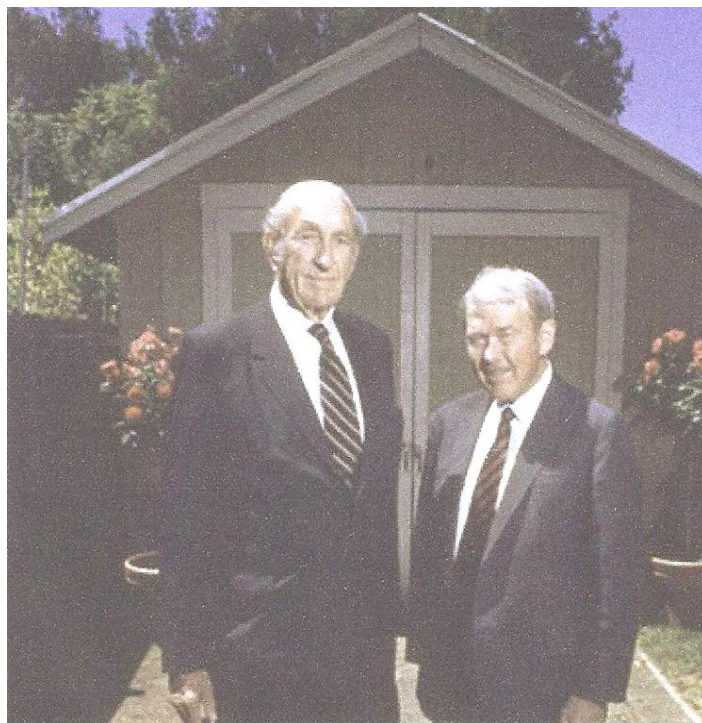
A STEP BACK IN TIME!

Two FREE tours of the HP Garage
will be conducted in
2015: May 7 and November 5,
and are limited to
10 Club members/guests per tour.

Sign up using the form below.

Tours start at 10 am and
last approximately 90 minutes.

We will meet in Palo Alto at 9:30 am in the
parking area by Building 20's defunct carwash
(off Hanover near the top of the hill).



For additional information or questions, please contact Trip Leaders between
9 am and 5 pm, Monday – Friday. Exceptions for emergencies only, please.

Trip Leaders: Gail Eatock 408-446-0428 taichats2@att.net or
Pat Fausett 650-941-7063 pat.fausett@sbcglobal.net

-----cut here-----

EVENT: HP Garage Tour _____ person(s)

Please indicate your preference of dates (1=1st choice; 2=2nd choice):

____ May 7, 2015

____ November 5, 2015

PLEASE PRINT NAMES:

Member Name _____ Phone () _____

Spouse/Guest Name _____ Phone () _____

(Please CIRCLE if spouse or guest—is this person a member?...YES...NO)

Emergency Contact _____ Phone () _____ Member

Emergency Contact _____ Phone () _____ Guest

SEND RESERVATION FORM TO: HPREC, P.O. Box 86, Mountain View, CA 94042-0086

EMAIL ADDRESS FOR TRIP CONFIRMATION: _____ (Please Print)

HPREC & COLLETTE TOUR OF INSPIRING ICELAND

SAVE \$200

PER PERSON IF BOOKED (AND SPACE IS AVAILABLE) BY MARCH 21, 2015

September 20 - September 28, 2015

9 Days • 10 Meals

7 Breakfasts • 3 Dinners

Highlights: Reykjavik, Golden Circle, Thingvellir National Park, Snafellsnes Peninsula, Puffin Cruise, Blue Lagoon

Rates Per Person

DON'T MISS OUT! BOOK NOW!

**Double \$4,714, Single \$5,264,
Triple \$4,684**

REGULAR RATES

**Double \$4,914, Single \$5,464,
Triple \$4,884**

***Included in Price:** Cancellation Waiver and Insurance of \$215 per person, Round Trip Air from San Francisco Intl Airport, Air Taxes and Fees/Surcharges, Hotel Transfers



Click for Additional Info: [**HPREC Tour**](#)

Please contact **Donald Higgins** at 408-736-1918 or donald1090@comcast.net or **Debbie Lum**, Accredited Cruise Counselor, at 408-773-8332 or dlum@cruiseplanners.com for more information and to book your trip.

HPREC Monthly Activities *By Lidia Donez*

Golf *By Phil Smith*



The skies cleared and the day was near-perfect for the 22 players who came out to play **Spring Valley** on **September 18**. The course is always tough to figure out, but we had some players find a way to do the right stuff to win the golf ball prizes. Those players were:

Men's Flight:	Mike Carviero	Net 63
	Peter Poon	Net 63
Low Putts:	Ben Lee	31
Ladies Flight:	Faith Seal	Net 68
Low Putts:	Mary Gong	37
Closest to the Pin:	Jim Schultz	Hole #4
	Navin Shankar	Hole #7
	Faith Seal	Hole #11
	Frank Lawrence	Hole #15

It was a perfect weather day for golf at **Los Lagos** on **October 16**. Twenty-one players came out for the final tournament of 2014, and 18 finished. Of those who did finish, those that found their game and won the prizes were:

Men's Flight:	Mike Carviero	Net 59
Putts:	Dan Schettler	33
Ladies Flight:	Faith Seal	Net 68
Putts:	Susan Bybee	32
Closest to the Pin:	Janice Nakao	Hole #2
	Peter Poon	Hole #8
	John McCabe	Hole #12
	Rhonda Louie	Hole #16

This wraps up our golf tournaments for the season. We'll start it all over again in March 2015. The courses and dates for next year will be finalized over the next month and we'll let you know the particulars in the January newsletter.

There is one item left to be taken care of to close the 2014 golf season. That's the naming of the men's and ladies' Golfer-of-the-Year awards. If you're coming to the Holiday Luncheon on December 8 at David's Banquet Center in Santa Clara, you'll be the first to know who won the awards. See you at David's.

"A good drive on the 18th hole has stopped many a golfer from giving up the game." Anonymous

Tours of the HP Garage

Look for the flyer on [Page 12](#) about upcoming opportunities to visit true HP history. Two FREE tours of the HP Garage will be conducted on May 7 and November 5 in 2015, and are limited to 10 Club members/guests per tour. It is a one and one half-hour tour of the HP Garage in Palo Alto, HP's first business site.

Bowling for fun! *By Carol Nakamoto*



Come join us at Homestead Lanes at 20990 Homestead Road, Cupertino. It's the 2nd Monday of each month. Price is \$9/hr or \$5.50/game (we bowl 2 games; depending on number of people bowling, our cost may vary between \$11-13.50). Shoe rental is separate. The next few bowling events are **November 10 and January 12 from 11 am - 12:30 pm**.

(NO bowling on December 8 due to the Holiday Luncheon.)

If interested, contact Bernard Bruand at ba.president@hpretirees.org or find his phone number in the Club Directory.

Hikes in December and January *By Jim Holl*



Sawyer Camp Trail, South	Tues. Dec 9, 10 am Rainout: Dec 16, 10 am	Cost: \$2 for carpool drivers	Leader: John McCabe 650-328-3472
<p>Meet at the Usual Carpool Location* or to drive directly, note that the normal entrance via the Bunker Hill exit is blocked. Take the Black Mountain Road/Hayne Road exit instead. Turn left under 280 to Skyline and then left to the trailhead at Crystal Springs Road.</p> <p>We will hike the south end of the Sawyer Camp Trail along Crystal Springs Reservoir. This hike features shimmering water, views of mountains, waterfowl, deer, dusky-footed woodrat nests, lunch at the Jepson Laurel, and lots of bathrooms. <u>Bring water and lunch.</u></p> <p>Length: 7 miles. Duration: 3 hours. Difficulty: Easy. No Dogs. Wheelchair accessible.</p>			
Sanborn County Park Lite Hike	Wed. Dec 17, 10 am No rainout date	\$6 per vehicle parking fee (or use County Senior Pass)	Leader: Jim Holl 408-446-2963 home 408-528-5846 cell
<p>Meet at the porch in front of the Youth Science Institute Building (also called the visitor center). Sanborn County Park is located on Sanborn Road. From Saratoga, proceed two miles west on Highway 9 to Sanborn Road. Turn left onto Sanborn Road, traveling one mile to the park entrance. There are no planned carpools.</p> <p>The plan is to explore the one mile nature trail and nearby sites. If the weather has been very wet, we will substitute a visit to the campground area.</p> <p>Bring water. Maps are available from the Park/Ranger Office below the Youth Science Institute Building.</p> <p>Length: About 1.5 miles. Duration: A bit more than about an hour. Difficulty: Moderate. No Dogs. Not wheelchair accessible.</p>			
Palo Alto Baylands from Charleston Slough	Tues. Jan 13, 10 am Rainout: Jan 20, 10 am	Cost: \$2 for carpool drivers	Leader: Ed White 650-964-1532
<p>Meet at the Usual Carpool Location* or to drive directly, go to the bay end of San Antonio Road and park along Terminal Boulevard. There is a restroom at the signed trailhead.</p> <p>The route includes the Adobe Creek Loop Trail and a swing out to the Shoreline Park in Mountain View. The migratory shore birds should be in at this time, so bring binoculars, scopes, bird cards, etc.</p> <p>Length: 6 miles. Duration: 4 hours. Difficulty: Moderate. Flat. No dogs. Not wheelchair accessible.</p>			
Stanford University Sculptures Lite Hike	Wed. Jan 21, 10 am No rainout date	May have parking fees - see below	Leader: Eileen Ruppel 650-575-4264
<p>Meet at the intersection of Quarry Road and Vineyard Lane across from the California Cafe at the Stanford Shopping Center in Palo Alto at 10 am Repeated from 2011. Pay parking (\$.75/half hour) is available there or if you will be visiting the shopping center, you may want to park and walk over to meet us there. Crate & Barrel parking is close by. The Cantor Center (has restrooms) opens at 11 am so prepare accordingly.</p> <p>Length: Less than 2 miles. Duration: 1.5 hours. Difficulty: Easy. No Dogs. Wheelchair accessible.</p>			

* **The Usual Carpool Location** is the Enid Pearson Arastradero Preserve parking area. From I-280, exit on Page Mill Road and go SW for about half a mile. Turn right on Arastradero Road and go 1.2 miles. The parking area is on your right. Join your fellow hikers near the restrooms.

Hiking email List: Updates, specifics and reminders will go out to the "HPREC Hiking Distribution List" about one week prior to the hike. If you are not on that list, contact John McCabe (leonaandjohn@att.net).



HPARV Volunteer News

hp.agilent.volunteers@hotmail.com

The Padua Dining Room *By John McCabe*

St. Anthony's Padua Dining Room gets lots of food from places like Second Harvest and local stores. Some of it is good, some not. Bernard, Rose Mary, and I sorted good melons, tomatoes, and potatoes from the bad. Padua has lots of mouths to feed. Rose Mary cut up zucchini and onions. Marsha and Pat divided yummy desserts into serving sizes; then they served fruit and drinks to Padua's customers. We felt good doing these things to help provide hot, well balanced meals to people in the community.



Marsha Lee and Pat Capshaw serve drinks to Padua's customers.



(L-R): Bernard Bruand, Rose Mary Brodbeck, Pat Capshaw, Marsha Lee, and John McCabe.

Creating Learning Kits at RAFT *By John McCabe*

Volunteering at RAFT, Resource Area for Teaching, is always a lot of fun. This time at RAFT, thirteen HP, Agilent, and Keysight retirees split into small groups and worked together to help create kits to help students learn about science, technology, engineering, and mathematics in a fun, hands-on manner. We also used scales and our own science and math skills to count the many parts that go into these kits. We worked hard and accomplished an impressive amount of work, all while socializing and enjoying each other's company.



Standing (L-R): Louis Sivo, Rose Mary Brodbeck, Fran Low, Irene and Clarence Wright, Al Low, Barbara Bowden, and John McCabe. Sitting (L-R): Nancy Lem, Marsha Lee, Marialis Seehorn, Barbara and John Trone.



Rose Mary Brodbeck (center), and Al Low (right) show new HPREC member Louis Sivo (left) the ropes.



We counted out parts to make over 500 Kaleidoscope Exploration kits, which help students learn about reflection, symmetry, color, light & angles.



We also started creating these kits to help children learn about money, counting, adding, subtraction, and problem solving.

Sunnyvale Community Services Room *By Marialis Seehorn*

Well, they did it again! Fifteen HPREC volunteers and guests stocked over 300 bags of produce with potatoes, carrots, cantaloupes, pears, greens and squash topped off with some fresh strawberries and for a lucky few -- frosted cupcakes! The volunteers' efforts reminded us all of past team events at HP -- years of picnics and project teams -- with everyone pitching in and getting the job done. It's a good feeling to see HP traditions continue into our retirements. Many thanks to everyone for making this event a success for SCS and the numerous families and seniors who count on them for food. (If you haven't done this before, be sure to sign up for the next event.)



Al Low (left) adds another box of strawberries while Keith Lee (right) keeps the bags moving. In the background, Chuck Leath and Richard Gee (a SCS regular) load bags for a SCS client.



(L-R): John McCabe, Chuck Leath, Marsha Lee, Carol and Bill Lovvorn, Rose Mary Brodbeck, Nancy Lem, Kay Gilmore (guest), Pat Capshaw, Keith Lee, Irene and Clarence Wright, Marialis Seehorn, and Al Low.

Hiking News *Compiled by Gary Ruppel*

Half Moon Bay Bluff Top Trail *By Ed White (leader) with photo by John McCabe*

On September 9, the nine HPREC hikers who were not off on exotic vacations walked along the bluffs of Half Moon Bay through six local and state beach parks, from Poplar Street to Miramar and back.

This hike has become an annual event for HPREC and is popular for wildlife sightings. This time, we saw the usual pelicans, gulls and cormorants. At lunch, we watched a sea lion fishing along the surf line and a whale breaching and spouting further out. Later, we watched a northern harrier dive, catch and later consume some kind of rodent right alongside the trail. Along the route, in addition to the usual Monterey cypress and Cape ice plant, we saw California lotus, morning glory, wild radish, yellow bush lupine, beach primrose, naked ladies, seaside daisy, wild mustard and poppies.



(L-R): Ed White, Elizabeth Shen, Jim Holl, Ronda Rosier, Jim Leasing, Janis Andrews, Dale Littman, Dee Bailey, and John McCabe.

The 6-mile route was flat and offered good views, but was crowded with campers, cyclists and dog-walkers in fair weather. You can access the trail from Highway 1 via Poplar Street, Kelly Avenue, Beach Avenue, Venice Blvd. and Miramar Drive. You can continue on the trail to the 4.5-mile point and lunch at any of several restaurants in Princeton-by-the-Sea, including Sam's Chowder House, Barbara's Fish Trap, Mezaluna and the HMB Brewery.

Uvas County Park *By Klaus Model (leader) with photo by John McCabe*

This park is all about trees, water, and shade. After driving through Sveadale, a private resort belonging to the Swedish American Patriotic League, to the park entrance, we took the Waterfall Loop Trail following Swanson Creek. On the way, we saw Lower Falls, Little Falls, Black Rock Falls, and Basin Falls. Because of the drought, there was very little water over Uvas Canyon County Park; the falls, a mere trickle. We skipped Upper Falls as it was dry. It was a steep 800 foot climb to where we crossed Swanson Creek clambering over the rocks. There we paused for our lunch on a cool spot. We

returned to the parking lot following the Contour Trail. All the trails were in the shade, normally a great feature for this time of the year, though the temperature was on the cool side this time which made it a very pleasant hike. All ten hikers enjoyed the hike.



To drive directly to Uvas Canyon, take I-280 south to Hwy 85. Just before 85 joins Hwy 101, take Bernal Road west turning left on Santa Teresa Blvd. Travel 3 miles and turn right onto Bailey Avenue. Follow Bailey 2.3 miles to McKean Road and turn left. After 2.2 miles, McKean becomes Uvas Road. Drive another 3.8 miles and turn right onto Croy Road. Follow Croy 4.4 miles through Sveadal to the park entrance. Park in the large parking lot by the restrooms.

(L-R): Janis Andrews, Klaus Model, Duncan Missimer, Helen Cecilia (guest), Kay Lindsay, Chuck Sieloff, John Kwan, Susan Pretzel, Dee Bailey, and John McCabe.

Cupertino's McClellan Ranch Preserve and Blackberry Farm Lite Hike *By Jim Holl (leader)* *with photo by John McCabe*

Ten hikers gathered at McClellan Ranch Preserve for a sunny October hike to Blackberry Farm. The group enjoyed the 4H Club animals, the community gardens, the history of the area, and the newly added trail through the Stockmeir orchard. The easy 2.25 mile round trip takes about an hour. The trail is wheelchair accessible, but dogs are not allowed.

To reach McClellan Ranch Preserve (signs still say McClellan Ranch Park) from I-280, exit at Foothill Blvd. Take Foothill Blvd. south across Steven Creek Blvd. to McClellan Road. Turn left on McClellan Road. McClellan Ranch Preserve is at 22221 McClellan Road (on the left) after you descend into the Stevens Creek corridor. From I-85, exit at Stevens Creek Blvd. Turn west toward the nearby hills and turn left onto Bubb Road. Cross the train tracks and turn right onto McClellan Road. McClellan Ranch Preserve will be on the right after you descend into the Stevens Creek corridor.



(L-R): Mike Fischer, Jim Holl, Barbara Beebe, Eileen Ruppel, Carol Arnett, Janis Andrews, Evelyn White, Galen White, Pat Musachia, and John McCabe.

Sympathy

By Blanca Guerrero

Robert "Bob" Huebner, age 77, of Los Gatos, CA passed away at home on August 25, 2104, from complications related to diabetes. Bob was the devoted husband of Donna, with whom he shared 54 years of marriage. He was the proud father of Denny (Wendy) Huebner, Kelly (Marvin) Blough, and Joe (Jacqueline) Huebner, and loving grandfather to Brian, Anna, Jessica, Jamie, and Elle. He is also survived by his dear sister Louise Burnett, her four children and their families. Bob Huebner was born in Palo Alto in 1936 to Ludwig and Babette Huebner, immigrants from Germany. He attended Palo Alto High School, received a bachelor's degree in engineering from San Jose State University, and received his MBA from Santa Clara University. As an adult, Bob worked in engineering and executive positions at Silicon Valley companies such as Hewlett-Packard, Royco, Varian, and Granger Associates. He retired at the age of 55. ([Published in San Jose Mercury News/San Mateo County Times on Sept. 19, 2014](#))

Deanna Pinto Read, 69, passed away at her home on September 8, 2014. Deanna was the first child of Joseph and Alicia Pinto, born May 31, 1945 in La Lima, Honduras. Deanna and her family immigrated to California from Honduras in 1951. She enjoyed a happy and loving childhood with her three sisters in Santa Clara, Ca., where she graduated from Wilcox High School in 1964. In 1975, Deanna made Santa Rosa, Ca. her home where she raised her three children. She joined Hewlett-Packard as a semiconductor process technician. After retiring from Hewlett-Packard (later Agilent), she continued to develop new interests and hobbies including black and white photography and watercolor painting. Deanna is survived by her mother Alicia, her sisters Mary, Rebecca, and Maricza, her husband Tom, two sons Steve and Dan, daughter Kelly, step-children Hilary and O'Shea, daughters-in-law Kristine, Amoura, and Rebecca, her grandchildren Evan, Aidan, Marcos, Eleanna, Benjamin, Charlie, Kalleen, Berit, and Victoria, as well as several nieces, nephews and cousins. ([Published Online in the Press Democrat from Sept. 13 to Sept. 15, 2014](#))

Susan Bergstresser, 64, passed away on September 18, 2014, after a long battle with cancer. She was born in Norman, Oklahoma and attended Hendersonville High School in Tennessee. Later, Susan moved to California in 1974 and worked as a real estate agent before joining Hewlett-Packard Company. A respected and trusted Hewlett-Packard Company employee for almost 35 years, Susan was known for being cheerful and calm, tech savvy, and a problem-solver who was very hard-working and dependable. Her career at HP was predominately in the PC business and her most recent role was as an executive assistant to the senior vice president of the personal printing and systems group; a role that gave her the opportunity to meet and assist hundreds of employees at all levels in the company. She retired from HP in January of this year. Susan found joy in gardening, reading, trying out new technologies, cooking, fine chocolates, collecting earrings and antiques including glassware, traveling, going to farmers markets, and most importantly sharing a cup of tea with close friends and family, and spoiling her dogs (Bob and Emma). Married for 19 years, she is survived by her husband and true love of her life, Trini Aguero; many loving family members and friends; and the newest addition to her family, Milly the dog. Susan often shared a favorite poem to comfort her friends when they lost a loved one, and we know she would want it to be shared again here. It reads: "...Speak to me in the easy way which you always used. Put no difference into your tone. Wear no forced air of solemnity or sorrow. Laugh as we always laughed at the little jokes that we enjoyed together..." Susan would also ask us all to take the time to find within ourselves and in others the extraordinary beauty of the human spirit, because that is the lovely person she was. Smiles. (*Submitted by Cindy Draper, HP Retiree*)

D. William Berte, 91, of Palo Alto, passed away on September 30, 2014. Bill was the son of Kendrick and Jesse May Berte of Peoria, IL. He graduated from Bradley University, Peoria, IL in 1944 with a B.S. degree in Chemistry. Bill served in the [U.S. Navy](#) during [World War II](#), 1944-1946, as an Electronic Technicians Mate Third Class, serving in the Pacific. In 1946 Bill used funds from the GI Bill to attend UC Berkeley and gain a second B.S. degree in Electrical Engineering. In 1958 he joined Hewlett-Packard in the Dynec Division. He retired after 28 years with HP in 1986. Bill and Betty Berte had four children, one of whom, Nancy, died in a car accident in 1980. Bill is survived by daughters Carolyn Louise Durand, Marjorie Marie Berte (O'Kane), son-in-law Jerry W. O'Kane, and son Andrew John Berte. ([Published in San Jose Mercury News/San Mateo County Times on Oct. 3, 2014](#))

Robert B. Grady, 71, husband of HPREC member Janice (Jan) Grady of Los Altos, California, passed away on October 18, 2014, at the age of 71. He died suddenly as a result of a ruptured aneurysm while visiting Yosemite Valley. Bob is survived by Jan, his wife of 45 years, as well as two children, Sean and Erin, a step-daughter, Dianne, and three grandchildren, William, Claire, and Abigail. Bob was born in Chicago in 1943, and was an avid basketball and baseball

player. He also loved listening to classical music and playing the piano. He graduated from high school in 1961 and then attended MIT, graduating in 1965 with a Bachelor's degree in Electrical Engineering. He moved to California for a job with Philco-Ford Corporation and worked as a Field Engineer, traveling to Air Force Satellite Tracking Stations. After finishing his travel assignments, he continued working while attending Stanford University on the Honors Coop program, earning his Master's Degree in 1969 in Electrical Engineering, with a strong emphasis in Computer Science.

In 1970, he joined Hewlett-Packard, working as an engineer and then as an R&D project manager, developing computer hardware, firmware, and software products. In his 28 years at HP, he also held management positions in many areas of R&D, Information Technology, and Corporate Engineering. He developed a particular interest in the processes needed to create high-quality software products, and he wrote and published three books on software metrics and project management: *Software Metrics: Establishing a Company-Wide Program* (with Deborah L. Caswell), *Practical Software Metrics for Project Management and Process Improvement*, and *Successful Software Process Improvement*. He was highly regarded in his field, and was asked to speak at numerous technical conferences and provide consulting and training for many HP customers.

After their marriage in 1969, Bob and his wife, Jan, bought their home in Los Altos and raised their family there. Bob played basketball and softball on local teams through the recreation program. He and Jan traveled extensively all over the world, but his favorite place was always Yosemite National Park, which the family visited at least twice a year for the last 46 years, hiking the trails and taking photographs. He was an early adopter of "green technology", installing 20 solar panels on his roof in the mid-1970s to heat his house and jacuzzi. After his retirement from HP in 1998, Bob's activities included oil painting, travel, golf, and swimming. Collections of his landscape paintings were exhibited in shows at the Los Altos Library. His latest project was to paint a landscape from each of the 50 states, which necessitated traveling to all of them to take photos. Before he died, he managed to complete paintings of 32 of them. His family and friends will greatly miss his love, warmth and enthusiasm and the joy he took in every aspect of his life. A Celebration of Life memorial service will be held on Monday, November 10, at 11:00 a.m. at Los Altos United Methodist Church, 655 Magdalena Ave, Los Altos. Please follow this link to the memorial page:

<http://www.forevermissed.com/bob-grady/>. (Submitted by Jan Grady)

To place a notice or provide information about HP retirees whom you know, please write to Blanca Guerrero, 1139 W Remington Dr., Sunnyvale, CA 94087 or email to bn.guerrero@NU-RIS.com.

#2 Best Value as HPREC Member *by Paula Hoelker-williams*

The #1 best value is the annual Club Directory published each February and loaded with valuable retiree and Club information. In my opinion, #2 has to be the HP sponsored tour of the HP Garage. I went on the last tour and it's jam-packed with stories and details of Bill and Dave's first year or so in business. HP will continue to provide this tour for our Club members as long as there is enthusiastic interest. Don't miss your chance to go - for the first, or fourth, or umpteenth time. Once the interest wanes, it's gone for good. Just to pique your interest, here are photos from the October 16 tour.



(Clockwise from top left)

1-What deal finalized at the kitchen table? **2**-What did Lucile "bake" in the oven? **3**-Whose workstation was this? **4**-What's inside the glass cabinet? **5**-Does the telephone still work? **6**-What's really inside the garage? **7**-The dining room table was really the first what? **8**-Whose desk was this/where is it found?