

HPREC NEWS



Agilent Technologies

Fun, friendship, service, memories for members of the Bay Area Hewlett-Packard/Agilent Retired Employees Club

MAY 2014

Issue: #94



HPREC President's Message *By John McGowan*

Spring has arrived in full, with bright green hillsides and warmer temperatures. By now, you have all received your bright pink-covered **Club Directory**, and hopefully will use the front pages to find a lot of useful information about contacts at HP and Agilent. Several members have asked me why we haven't also switched to a simple PDF file and sent our members an electronic Directory. That is a great question, and the answer today lies in the need for security and the inclusion of discount passwords in the Directory. Without a password-protected website to restrict access to those "magic words," we have chosen to limit electronic distribution of them to prevent "over-sharing" or unauthorized access. I would be interested in hearing from members who would prefer the Directory in PDF format. We will continue to explore ways to address the confidential password issues.



More than 100 members enjoyed our **Spring Fling Luncheon** at Mariani's in Santa Clara, with **Shiela Robertson of Agilent Technologies** as our guest speaker. Shiela was able to share a lot of information about the decision to separate Agilent into two companies, and provided a strategic overview of the strengths of **Agilent and Keysight Technologies** going forward. Mariani's did a good job of serving the group, and our thanks to Chair **Harold Kaye** for continuing to manage the event.

Speaking of events, the Club's **Picnic** is coming up on **Saturday June 7 at Cuesta Park in Mountain View**. Co-Chairs **Homer Wong and Judy Coleman** have promised that all of the issues with last year's picnic have been resolved, and we will again have a traditional HP-style picnic, with beer and beverages delivered on time, and delicious barbecue in a park setting. The sign-up form is on [Page 9](#), so please join us for a fun day in Mountain View in June.

Please make a note on your calendar to save the date for our annual **Holiday Luncheon on Monday, December 8**. Based on very positive feedback, we are going back to David's Banquet Center in Santa Clara and hope to see as many members as possible. Again, we are planning to skip having a speaker and allow more time for socializing and door prizes.

In addition to the major events (picnics/luncheons), the Club continues to schedule a variety of travel, sports/exercise and volunteer events, and ALL members are welcome to contact the organizers and join in. Examples include the group ticket purchase for the musical *Jersey Boys* in San Jose July 17 (featuring the musical story of "The Four Seasons" group), volunteer day at Sunnyvale Community Services June 16, friendly golf tournament at Spring Valley GC in Milpitas on May 15 and Santa Clara on June 19, and hiking in Los Altos and Palo Alto on May 13 or May 21. (See [Page 8](#) for a complete listing.) Hopefully, you have provided us with an email address so we can send reminders or special notices when opportunities come up.

Finally, a few words about the organization and leadership in the Club. **Bernard Bruand** has stepped forward to accept the role of Vice President, and **Blanca Guerrero** has taken on the task of managing our "Condolences" activities. Many of you noticed and commented on the fresh, new look of the March newsletter, and we thank **Bruce Karney** for the updated layout and design. Unfortunately, we are again seeking someone to take on the editorship/coordination of the newsletter, which involves collaborating with the editorial team and contributors, assembling the newsletter, and forwarding it to the printer and webmaster six times per year. We continue looking for new or existing members interested in taking on projects like the newsletter or becoming a member of the Board.

Welcome New Members *By John Weidert, Membership Chair*

HPREC would like to welcome these new members who have joined our Club from late February through April 2014: **Patricia D. (Pat) Burger, Patricia A. (Pat) Erwin, Leslie (Les) Krammer, Diane Grisell Larsen, Frank M. Muller, Ronald George Olson, Elizabeth (Liz) Robinson, Ronda L. Rosner, Jane Seligson, Nancy Dodds Turner and Rosanne Wyleczuk.** Welcome aboard and thank you for joining HPREC.

Membership Drive *By John Weidert, Membership Chair*



Thanks to all for your help in increasing our membership numbers. We have seen a slight uptick in our numbers, but we continue to need your support in bringing in even more members.

Remember that we have prepared an informative, colorful brochure highlighting the key activities and benefits that come with being a member of HPREC. This brochure is available on our website www.hpretirees.org/hprec. The links to the brochure and enrollment form can be found under JOIN THE CLUB. If you would like to have me send you some copies of either document, just let me know.

As mentioned in previous articles, HPREC will be offering two **\$50** Gift Certificates to be given to drawing winners at our Holiday Luncheon in December 2014. Each name entered (with the drawing pool; bring in more than one member and you will an additional time. Bring in three new paid members and get three from November 1, 2013 to October 31, 2014 will be eligible.



dues paid) will put your name in have your name added to the pool chances to win, etc. All entries

The new member should write your name on the enrollment form already referred new members who have joined and paid, just send me a note to that effect). All members of the Club are eligible to win (except the Membership Chairman). One winning certificate per member. Let's continue our momentum and bring our membership level back up! You will be doing the new member and the Club a real favor. Questions or comments? Email me at jweidert2@gmail.com.

for you to qualify (if you have

HPREC NEWS May 2014

Interim Editorial Staff:

Lynn Cortes
Paula Hoelker-williams
Carol Nakamoto
Marialis Seehorn

To submit articles or contact
the Editor, email:
HPREC_News@yahoo.com

Contents of this Issue

[Page 1](#)...President's message

[Page 2](#)...Welcome New Members
Membership Drive

[Page 3](#)...Spring Fling Luncheon

[Page 4](#)...Carol's Corner: Web Info

[Page 6](#)...HP's Snapfish Center

[Page 7](#)...Travel Talk
HP Memory Project Update

[Page 8](#)...Upcoming Activities, Events
and Travel

[Page 9](#)...Summer Picnic in Mtn View

[Page 10](#)...HPARV Volunteer Ops

[Page 11](#)...Golf Tournaments

[Page 12](#)...HP Garage Tours flyer

[Page 13](#)...Iceland & Norway Cruise flyer

[Page 14](#)...Monthly Activities

[Page 15](#)...Hiking Schedule

[Page 16](#)...HPARV Volunteer News

[Page 17](#)...Hiking News

[Page 19](#)...RV/Camping Interest?

[Page 20](#)...Sympathy

[Page 22](#)...Add'l Spring Fling Photos

To view newsletters online (in color!) visit www.hpretirees.org/hprec/

HPREC, P.O. Box 86, Mountain View, CA 94042-0086

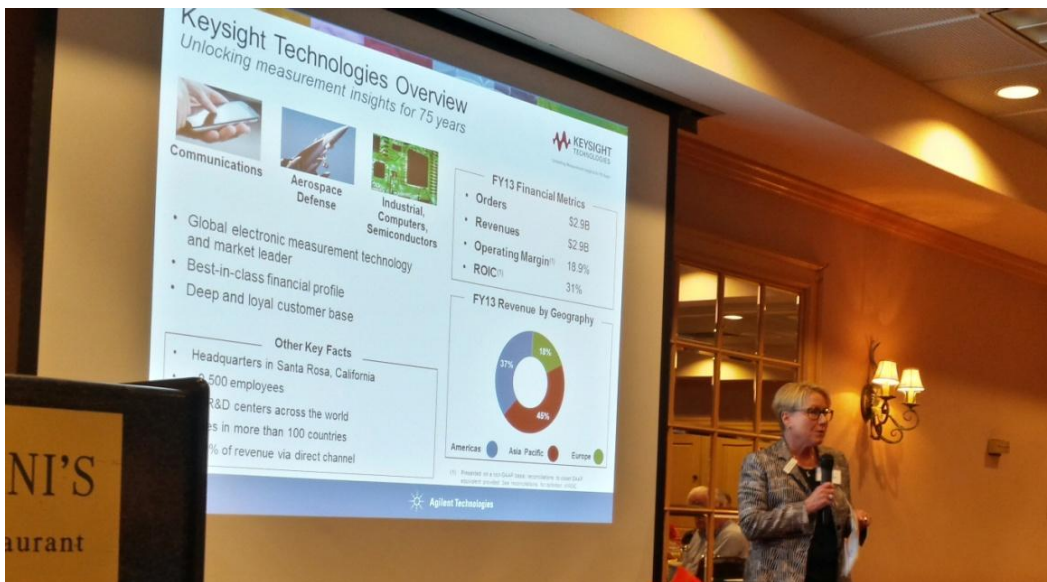
Spring Fling Luncheon *By John McGowan*

Nearly 100 members and guests of the Club met at Mariani's Inn and Restaurant in Santa Clara for the annual Spring Fling Luncheon on March 13. The restaurant offered four menu options which made for a great meal, with a busy social hour ahead of the luncheon.



This year, our guest speaker was **Shiela Robertson**, who is Senior Vice President of Corporate Development and Strategy for Agilent Technologies in Santa Clara. She was accompanied by **Mark Allen** who is Director of Merger and Acquisition Integration at Agilent, and is leading the effort to prepare the company for separation into two separate corporations this summer.

Shiela began by explaining that the two primary Agilent Business Units (Electronic Measurements and Life Sciences/Diagnostic) have different business cycles and financial models, but each is doing very well and each will have \$3 billion or more in revenue upon separation. Both companies will be well capitalized and capable of growing with strong margins and returns on invested capital. The Electronic Measurement Business (Keysight Technologies) will be



headquartered in Santa Rosa under CEO **Ron Nersesian** (our Spring Fling Speaker last year). Agilent will remain in Santa Clara under CEO **Bill Sullivan** and focus on faster growth opportunities around life sciences and diagnostic tools.

Keysight Technologies will begin operating as an independent company under its own name and brands in August of this year. Rather than doing an IPO of Keysight

stock, Agilent shareholders should receive shares in Keysight Technologies in October or November, which will be the final step in spinning out from Agilent. Agilent's strategy is to follow a "Clone and Go" model for separating most of the shared functions and activities, similar to the model used when Agilent was spun out of HP in 1999. Each company will share common policies, infrastructure tools (finance and IT tools) as they separate. It was a very informative session, and helped to explain both the reasons behind the split and the positive expectations for the two companies going forward.

The Club thanks **Harold Kaye** and the other volunteers who worked hard to make the Spring Fling a successful gathering again this year. Additional photos on [Page 22](#).

Carol's Corner **HP-related Retiree Websites**

... for HP and Agilent retirees

By Carol Nakamoto, HPREC Web Communicator

LATEST – Updates, new info from last newsletter.

www.hpretirees.org/hprec (Our Club's website, maintained by HPREC volunteers)

From the Tech Team – In the January 2014 newsletter issue, we mentioned:

- “We are looking at new online features such as renewing annual membership and paying Club dues, signing up for events, better email functionality, etc.”
- “You should not see any change to the website after its initial transition. You may see a redirect to www.hpretirees.org which you might wish to bookmark.”

We can now report that our migration to a new web host was completed on time and under budget☺ on February 14. You may have noticed the redirect to www.hpretirees.org/hprec. Changing from [.com](http://www.com) to [.org](http://www.org) was necessary to facilitate a clean migration of our website “as is.” It's from this new platform that we can begin our exciting enhancements, some mentioned in the first quote above. Go ahead and bookmark www.hpretirees.org/hprec. ([.com](http://www.com) still works.)

At the HPREC March 5 Board meeting, the **Tech Team** presented our recommendations to support the Board's vision for the next several years, and gained input and approval to proceed. We are taking one function at a time so each can be “introduced” to our membership and properly tested.

- **Fall 2014**
 - Join Club by completing online application, including email address (to be added by HPREC volunteer admin) and pay dues online.
Current process: download application form, mail it in with check payment, and separately visit website to enter own email address to our secure database.
 - Renew membership online and pay dues online – via an email notification to members for whom we have email addresses. *Ah, ha! A good reason to add your email address to the system now. Also, we will no longer accept multi-year dues payments, beginning in November 2014 (to simplify the process). Working on an online process for “voting” for new Board members in Fall 2015.*
Current process: mail dues notices and Board member ballots to homes with request to mail back ballot and check for payment of dues. Member required to add/update their own email address in secure system. (Note: This fall, we will communicate a new, easier process to “update” your email in our system.)
- **Early 2015**
 - Sign up online and pay for the first event, March's Spring Fling Luncheon. *Information will be in the January 2015 newsletter issue's flyer for that event. Once this capability is offered, additional events and activities will be handled online throughout 2015 and beyond....stay tuned.*

Now, this might suggest that there's an advantage to you for the Club to have access to your email address. *Yes, it does!* Online membership renewals and payments, timely communication, advance notifications of events and trips, being ready for future enhancements, save the price of a stamp and save a tree, to name a few. But, if you prefer to retain the status quo, we will continue to send information to your homes and accommodate the manual process. Just as a reminder, our secure, online email address database has privacy protections, and is used infrequently by members of the Board and/or their designate, so you won't see a flood of messages from the Club. Please give it a try by:

1. Adding or changing your email address in the database now by following these steps:
 - go to our Club's website www.hpretirees.org/hprec
 - scroll to "Retiree email list" and click on it
 - scroll to near bottom and click on [2] "Change your email address"
 - enter user name and password (in box below, last row)
 - begin to fill in fields, starting with [1]

2. Or, waiting for this year's paper mailing of the Dues Notice, and add your email address to the form and check payment that you will need to return by postal mail (use a stamp). You would then be in the online process for 2015 events/activities and FY16 renewal. Instructions will be coming soon.

BASICS – As a reminder, I am no longer including the **BASICS** information in the newsletter.

- Online at the Club website, click on “Website Introduction” link
- In the front pages of your annual Club Directory (*mailed to your homes every February*)
- In your Membership Welcome Packet when you first joined the Club.

- Club Directory
- Paper version of the newsletter
- Bi-monthly email from me notifying you that the newsletter has been posted online (see * below)
- Welcome Packet when you first joined the Club.

Program	URL	Username	Password
HP (News, Benefits and Stay Connected)	www.hp.com	<p>Names and passwords are not shown in the online Newsletter. See the printed Club Directory for them.</p>	
Bay Area Employee Programs (Discounts)	www.bayarea.hpway.org		
HP Branded Merchandise	www.hpstore.com		
Passport Unlimited (dining discounts)	www.bayarea.hpway.org		
Online HPREC Member Email Directory (Note: password is case sensitive and the last character is the number 1)	www.hpretirees.org/hprec/		

- * Want to **stop** having the paper newsletter mailed to your home and read the color version online? Go to www.hpretirees.org/hprec, click on Newsletters, and fill out the form (same process to resume the paper mailing).
- * If you wish to receive an email from me notifying you that the newsletter has been posted online, go to our Club's website, scroll to the "Retiree email list...change member options" link, enter the user name and password found in the choices above, and select [9]. If you have not yet added your email address to our secure online database, you must do that first, then select [9]. Contact **Carol Nakamoto** at carol_nakamoto@hotmail.com (underscore between names) or call me (phone number in directory) if you need help.

www.bayarea.hpway.org (Maintained by HP affiliated volunteers; additional offerings available)

- ***Here is a time-sensitive, discounted offering available for pick-up in the HP Store (Palo Alto HQ, Lobby 20D):***
 - HP Friends & Family Day at Great America – June 28
- ***Here are time-sensitive, discounted online offerings:***
 - SHN Orpheum Theatre Discount Tickets - ***Once*** (June 17-July 13); ***Pippin*** (Sept 23 - Oct 19)
 - Broadway San Jose performances - ***Joseph and the Amazing Technicolor Dreamcoat*** (May 27- June 1), ***Jersey Boys*** (July 15-20), ***Wicked*** (Aug 27-Sept 14)



hp.alumniprogram.com/continuum/home (Maintained by HP)

Remember to keep checking the HP Continuum website for news, discounts, benefit updates, retiree profiles, and more. Set up a password, log in, and check it periodically.

www.hpalumni.org (Maintained by volunteer former HP retirees/employees)

Free to join. Recent Benefits Forum discussion topics:

- "Medicare - if you see a prescription copay increase during the year"
- "Signing up for Medicare if covered by spouse's HP retiree plan"
- "Auto refills work differently if over 65"
- "OptumRx - 90-day supply must be via mail order"

HP's Snapfish Center (formerly Digital Oasis Center)...*changes have arrived!*

By Carol Nakamoto and Homer Wong



If any of you have recently visited the “photo center” in Palo Alto, Bldg 20, C-level, you have noticed the evolution of HP transitioning the secured room:

- from a full service center offering free photo, poster, canvas, calendar, photo book, greeting card products
- to a self-managed partial service center directing employees and retirees to use **Snapfish**, the HP-owned online printing service offering many fun products. With this decision by HP, Fran Jacobs, longtime manager of the Center, retired April 25, 2014.

What does “self-managed” mean to us? HP is no longer providing an onsite manager for assistance, so we won’t be able to knock on the window of the Center on C-level for Fran to let us in, as the Center still requires a key card to enter. When I visited the Center during Fran’s last week, she introduced me to her manager so that Homer Wong and I can follow up to attempt to receive approval for some form of continued access. If an access solution can be worked out, we will continue to benefit from printing free photos, greeting cards, and some holiday items.

Stay tuned for an update in the July issue. In the meantime, familiarize yourself with Snapfish @ HP website (www.snapfish.com/athp/) and all of the wonderful products and discounts it has to offer. It is a good benefit!

Travel Talk *By The Travel Committee*



Why are some HPREC trips canceled after being advertised?

Over the last few years, the number of HP retirees that participate in bus trips has declined significantly. This change has caused the HPREC Travel Committee to study all the costs associated with planned trips to determine if there is a cost that has changed that would have an impact on group participation. Also, we looked at the different types of events as to past retirees' participation.

Cruises and Extended Trips always have had between 35 and 60 participants until more recently. Changes over time are increased trip costs, duplicate trips, airline quality, and a reduction in the number of members interested in group travel. No one cause stands out as the culprit, but all have an impact. The number of retirees now going on HPREC extended trips is between 10 and 15. We will continue to schedule Cruises and Extended Trips if we have this number of retirees participating. Trip costs are not impacted by the number of members traveling.

Drive-to-Events are limited by the event capacity. Trip costs are not determined by the number of participants, but by access to the event. These events are popular and usually have maximum participation.

Local Bus Trips are impacted by the number of participants. For example, the SF Symphony Open Rehearsal events originally scheduled for January and April then canceled due to low interest, had a ticket cost and a transportation cost. The ticket cost was reduced from \$22 to \$16 for a group of 15 or more. The transportation cost for the coach-type bus rented for the events was going to be \$1148 for a full day rental (fixed rate per hour) and equally divided by the number of participants.

The **chart to the right** shows the transportation cost based on the number of participants. At 45 participants, the coach cost is a reasonable \$25 per person, \$50 per couple. At 36 participants, it is an acceptable \$31 per person, \$62 per couple. At 15 participants though, the cost is \$76 per person or \$152 per couple, almost prohibitive. With the declining interest in local bus trips, the transportation cost is making it difficult to continue to provide this trip option. Economy of scale is the only way to make bus trips acceptable to the members and keep the Travel Committee from canceling events.

Royal Coach 9 hours (Fixed Cost)	SF Symphony April 2014 - # Tickets	Coach Cost Per Person
\$1,147.25	55	\$20.00
\$1,147.25	50	\$22.00
\$1,147.25	45	\$25.00
\$1,147.25	44	\$26.00
\$1,147.25	43	\$26.00
\$1,147.25	42	\$27.00
\$1,147.25	41	\$27.00
\$1,147.25	40	\$28.00
\$1,147.25	39	\$29.00
\$1,147.25	38	\$30.00
\$1,147.25	37	\$31.00
\$1,147.25	36	\$31.00
\$1,147.25	35	\$32.00
\$1,147.25	34	\$33.00
\$1,147.25	33	\$34.00
\$1,147.25	32	\$35.00
\$1,147.25	31	\$37.00
\$1,147.25	30	\$38.00
\$1,147.25	25	\$45.00
\$1,147.25	20	\$57.00
\$1,147.25	15	\$76.00

As members of HPREC, please support the events planned by your Travel Committee. Let us know of an event you would like to see us schedule. Your feedback and interest are very much appreciated.

HP Memory Project Update *By Paula Hoelker-williams*

Dave Kirby's memoir is now online at www.hpmemory.org/timeline/company/memories_home.htm. Per John Minck, "We barely finished the content before Dave died. It is a wonderful story; Dave and I had an enjoyable time in our interview sessions, laughing at our good times at HP." HP memories to share? Contact John at JLMinck1222@att.net.

Upcoming Activities, Events and Trips

This table combines information about all the Club's social gatherings into an easy-to-use table that is sorted by date. Scan this list, check off the ones you want to attend, and be sure to add them to your calendar.

Events that are not free of charge have a \$ in the "Type" column. All others are free, or at least potentially free if you don't participate in the carpool.

Type	Date and Time	Description and Location	Sign-up Deadline
Bowl \$	May 12, 11 a.m. – 12:30 p.m.	Homestead Lanes, Cupertino	Just come! see Page 14
Hike	May 13, 10 a.m. – 1:30 p.m.	Rancho San Antonio, Cupertino	Just come! ** see online
Golf \$	May 15, 10 a.m. – 4 p.m.	Spring Valley, Milpitas	May 10, ** see online
Hike	May 21, 10 a.m. – 11 a.m.	Downtown Palo Alto Lite Hike	Just come! ** see online
Picnic \$	Jun. 7, 11 a.m. – 4 p.m.	Summer Picnic, Cuesta Park, Mountain View	May 23, see Page 9
Bowl \$	Jun. 9, 11 a.m. – 12:30 p.m.	Homestead Lanes, Cupertino	Just come! see Page 14
Hike	Jun. 10, 10 a.m. – 1:30 p.m.	Portola Redwoods State Park	Just come! see Page 15
Help	Jun. 16, 10:45 a.m. – 2 p.m.	Sunnyvale Community Services	Jun. 9, see Page 10
Hike	Jun. 18, 10 a.m. – 11 a.m.	Lake Elizabeth Lite Hike	Just come! see Page 15
Golf \$	Jun. 19, 10 a.m. – 4 p.m.	Santa Clara Golf & Tennis Club	Jun. 14, see Page 11
Hike	Jul. 8, 10 a.m. – 1:30 p.m.	Palo Alto's Foothills Park	Just come! see Page 15
Bowl \$	Jul. 14, 11 a.m. – 12:30 p.m.	Homestead Lanes, Cupertino	Just come! see Page 14
Hike	Jul. 16, 10 a.m. – 1:30 p.m.	Devil's Slide Trail	Just come! see Page 15
Tour	Jul. 17, 9:30 a.m. – 11:30 a.m.	HP Garage, Palo Alto	*, see Page 12
Golf \$	Jul. 17, 10:30 a.m. – 4:30 p.m.	Sunnyvale Muni	Jul. 12, see Page 11
Trip \$	Jul. 17, 7:30 p.m. – 10 p.m.	<i>Jersey Boys</i> musical, San Jose	SOLD OUT
Help	Jul. 27, 11 a.m. – 4 p.m.	Marine Science Institute	Jul. 20, see Page 10
Golf \$	Aug. 21, 10 a.m. – 4 p.m.	San Jose Muni	Registration not yet open
Trip \$	Sep. 8 – 21	London to Norway to Shetland Islands to Iceland to Newfoundland to New York City	Not specified, see Page 13
Golf \$	Sep. 18, 10 a.m. – 4 p.m.	Spring Valley, Milpitas	Registration not yet open
Tour	Oct. 16, 9:30 a.m. – 11:30 a.m.	HP Garage, Palo Alto	*, see Page 12 – <i>FINAL TOUR for HPREC</i>
Golf \$	Oct. 16, 10 a.m. – 4 p.m.	Los Lagos, San Jose	Registration not yet open
Luncheon \$	Dec. 8, 11 a.m. – 2 p.m.	Holiday Luncheon, David's Banquet Center, Santa Clara	Watch 4 flyer - September

* Each tour is limited to 10 individuals.

** Online Events Calendar. Go to www.hpretirees/hprec and click on Coming Events.

PICNIC!

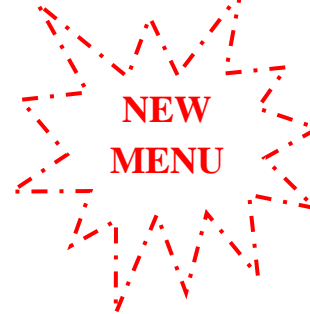


Cuesta Park

615 Cuesta Drive near Grant Rd.
Mountain View, CA

11:00 a.m. - 4:00 p.m.
Saturday, June 7, 2014
\$30 per person (adults
only)

Bingo: 1:30 p.m.



BBQ Spare Ribs/Chicken (sauce
on side), Seasoned Ranch Beans,
Buttered Corn on the Cob,
Chopped Salad, Garlic Bread,
Coffee/Cookies

For additional information or questions, please contact one of the Picnic Co-chairs between 9:00 a.m. and 5 p.m., Monday – Friday. Exceptions for emergencies only, please. Co-chairs: **Homer Wong** 650-387-5426 homer_wong@hotmail.com and **Judy Coleman** 650-856-9912 jukiac@yahoo.com.

-----cut here-----
EVENT: HPREC PICNIC 2014 _____ person(s) @ \$30.00 = \$_____ Total
(PLEASE WRITE ONE CHECK PER EVENT)

PLEASE PRINT NAMES:

Member Name _____ Phone () _____
Spouse/Guest Name _____ Phone () _____
(Please CIRCLE if spouse or guest—is this person a member? ...YES...NO)
Emergency Contact _____ Phone () _____ Member
Emergency Contact _____ Phone () _____ Guest

SEND RESERVATION FORM & CHECK TO: HPREC, P.O. Box 86, Mtn. View, CA 94042-0086 BY MAY 23

Your reservation will be considered confirmed once we receive your sign-up form and check.

For ordering purposes, **please indicate your beverage choice(s).** Water will also be provided, of course.

___ Beer ___ Wine ___ Coke ___ Diet Coke ___ Pepsi ___ Diet Pepsi

Picnic Volunteers Needed

We need your help! Please check your interest below and return this with your registration and check.

Yes, I want to help with: ___ Set-up ___ Serving ___ Cookies/Coffee ___ Clean-up

Email _____

HPARV “Done in a Day” Volunteer Opportunities



Sunnyvale Community Services

Sunnyvale Community Services is an independent, nonprofit emergency assistance agency. Their mission is to prevent homelessness and hunger for low-income families and seniors facing temporary crises. They provide financial aid, food, and other support that prevents larger problems with more expensive solutions. We can help. Come join us as we sort and bag produce and groceries and distribute them to SCS clients.

Date & Time: **Monday, June 16, 2014, 10:45 a.m. – 2:00 p.m.**

Place: Sunnyvale Community Services, 725 Kifer Road, Sunnyvale, CA 94086

Directions: From Highway 101, take the Fair Oaks Avenue exit and go south on North Fair Oaks Avenue. After 0.8 miles, continue on North Wolfe Road. After 0.9 miles, turn right on East Kifer Road. Sunnyvale Community Services will be in .01 of a mile on your right. Please use street parking -- lot is for client use only.

RSVP hp.agilent.volunteers@hotmail.com or call **Marialis Seehorn** at 408-244-7556 by **June 9**

More information: www.svcommunityservices.org/index.html



Marine Science Institute

The Marine Science Institute puts students in direct physical contact with their local bay environment to help cultivate their natural sense of curiosity while enriching their understanding of science and fostering a responsibility to protect their environment.

We help judge poetry and drawings submitted to the Institute by this year's student attendees for inclusion in MSI's annual fund raising publication, "Translating the Tides." The work will be done sitting at a table. Please bring a lunch for an afternoon picnic. At 3:00, we will go aboard their research ship, the Robert G. Brownlee, and enjoy a trip on the San Francisco Bay.

Date & Time: **Sunday, July 27, 2014, 11:00 a.m. – 4:00 p.m.**

Place: Marine Science Institute, 500 Discovery Pkwy, Redwood City, CA 94063

Directions: From 101, take the Woodside Road/Seaport Blvd. exit. As you exit, take Seaport Blvd. toward the bay (to the East). Take Seaport Blvd. to Chesapeake Dr. and turn left onto Chesapeake into the business park. Follow Chesapeake and turn left on Saginaw. Then turn right on Cardinal Way and follow it all the way to the end. At the end of the road, veer left to park in the business park. Walk south toward the Stanford Boathouse, and continue on to the Marine Science Institute.

RSVP **Joe Diesel** at hp.agilent.volunteers@hotmail.com or call **John McCabe** at 650-328-3472 by **July 20**

More information: www.sfbaymsi.org/

HPREC Golf Tournaments in June and July



Notes:

- Each HPREC member may invite one guest.
- Pay for golf carts in the pro shop at check-in.
- For further information, call **Phil Smith** at 408-749-1656.

Santa Clara Golf & Tennis Club

5155 Stars and Stripes Drive
Santa Clara, CA 95054
408-980-9515

Date: **Thursday, June 19, 2014**

Starting Time: **10:00 a.m.**

Reservations due by: Saturday, June 14

Cost: **\$39** (includes \$2 prize fund)

Make check(s) payable to HPREC GOLF
and mail with this form to:
HPREC Golf,
c/o Phil Smith,
802 Beaverton Court,
Sunnyvale, CA 94087

-----Cut here-----

HPREC GOLF RESERVATION

Santa Clara, June 19, 2014

NAME	CART?	EMAIL**

** Only if not on file

Sunnyvale Golf Course

605 Macara Avenue
Sunnyvale, CA 94085
408-738-3666

Date: **Thursday, July 17, 2014**

Starting Time: **10:30 a.m.**

Reservations due by: Saturday, July 12

Cost: **\$41** (includes \$2 prize fund)

Make check(s) payable to HPREC GOLF
and mail with this form to:
HPREC Golf,
c/o Phil Smith,
802 Beaverton Court,
Sunnyvale, CA 94087

-----Cut here-----

HPREC GOLF RESERVATION

Sunnyvale, July 17, 2014

NAME	CART?	EMAIL**

** Only if not on file

Sign up now! Final year for the tours!

EVENT: HP Garage Tour _____person(s)

Please indicate your preference of dates (1=1st choice; 2=2nd choice):

____July 17, 2014 (Q3)

____October 16, 2014 (Q4)

PLEASE PRINT NAMES:

Member Name _____ Phone () _____

Spouse/Guest Name _____ Phone () _____

(Please CIRCLE if spouse or guest—is this person a member? ...YES...NO)

Emergency Contact _____ Phone () _____ Member

Emergency Contact _____ Phone () _____ Guest

SEND RESERVATION FORM TO: HPREC, P.O. Box 86, Mtn. View, CA 94042-0086

EMAIL ADDRESS FOR TRIP CONFIRMATION _____ (Please Print)

-----cut here-----

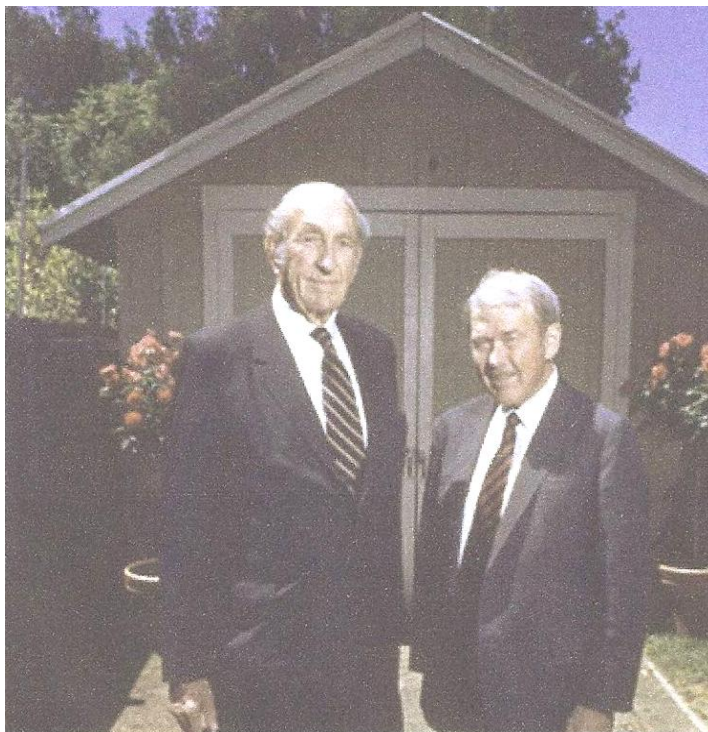
A STEP BACK IN TIME!

FREE tours of the HP Garage are conducted quarterly and are limited to 10 Club members/guests per tour.

Sign up using the form above.

Tours start at 10:00 a.m. and last approximately 90 minutes.

We will meet at 9:30 a.m. at HP Palo Alto in the parking area by Building 20's defunct carwash (off Hanover near top of the hill).



For additional information or questions, please contact Trip Leaders between 9:00 a.m. and 5:00 p.m., Monday – Friday. Exceptions for emergencies only, please.

Trip Leaders: **Gail Eatock** 408-446-0428 taichats2@att.net or
Pat Fausett 650-941-7063 pat.fausett@sbcglobal.net

HPREC and Cruise Planners present:

Iceland & Norway Explorer -- 14 Days

Icelandic and Northern European wonders

From London, embark on a breathtaking cruise to the heart of Northern Europe and Iceland. You'll set sail from London on board the magnificent Ruby Princess®, en route to myriad destinations that capture the best of these regions, including the Shetland Islands, Bergen, Akureyri and so much more. You'll then visit the Icelandic wonders of Reykjavik, before porting in picturesque St. John's and ending your journey in New York. Enjoy exploring fascinating destinations and colorful cultures as you escape completely® with Princess Cruises®.



Cruise Highlights

Bergen

The captivating waterfront of Bryggen is a highlight of this historic town. With an unmistakable cluster of 62 buildings in the style of the Hanseatic League's trading era of the 14th to mid-16th centuries, it was declared a UNESCO World Heritage Site in 1979.

Akureyri

Lava lakes and waterfalls surrounding Iceland's second-largest city will compete with botanical gardens and forests for your attention.

Shetland Islands (Lerwick)

With a history that dates back 5,000 years, Scotland's Shetland Islands are one of Europe's little known gems.

Date: September 8, 2014

Fares from \$1,999 per person

Fares are per person, based on double occupancy, subject to availability and capacity controlled.

Government fees and taxes are per person, additional and subject to change. See applicable Princess® brochures for terms, conditions and definitions that will apply to your booking. Offer available to residents of the U.S. and Canada.

Other restrictions may apply. © 2013 Princess Cruises. Ships of Bermudan registry.



Please contact **Donald Higgins** at 408-736-1918 or donald1090@comcast.net or **Debbie Lum**, Accredited Cruise Counselor, at 408-773-8332 or dlum@cruiseplanners.com for more information and to book your trip.

HPREC Monthly Activities *By Lidia Donez*

Golf *By Phil Smith*



We had 22 players brave the cold and windy conditions on a gray day at Sunnyvale Golf Course on March 22. The weather challenges added to the usual challenge of hitting the ball down the middle. Those players who managed to best the elements and the golf challenges to win the coveted prizes were:

Men's Flight:	Carl Cottrell	Net 70
Low Putts:	George Prodan	31
Ladies Flight:	Pat Hanson	Net 68
Low Putts:	Pat Hanson	32
Closest to the Pin:	Bev Murphy	Hole #4
	Rhonda Louie	Hole #7
	Jim Schultz	Hole #13
	George Prodan	Hole #15

It was a sunny, warm day with a nice breeze which kept the 22 players in prime condition to conquer the new venue at San Jose Muni on April 19. The golfers who found their groove and worked the course in their favor for some golf ball prizes were:

Men's Flight:	John McCabe	Net 64	
Low Putts:	John McCabe	28	
Ladies Flight:	Rhonda Louie	Net 66	
Low Putts:	Rhonda Louie	34	
Closest to the Pin:	Sharon Hollingsworth	Hole #4	**Birdie**
	Rhonda Louie	Hole #7	**Birdie**
	Phil Smith	Hole #12	
	Al Bagley	Hole #17	

We are always looking for new players to come out and enjoy this fun and challenging activity. If you enjoy the game, we encourage you to come out and try our tournaments on for size. We think they'll fit very well. Check out the flyer on [Page 11](#) for the June and July outings; all are detailed on [Page 8](#) and online on the Coming Events webpage at www.hpretirees.org/hprec/events.shtml. Look for the next outing that will match your schedule. You'll have a great time with your HPREC friends.

"There are two things you can learn by stopping your backswing at the top and checking the position of your hands: how many hands you have, and which one is wearing the glove." Anonymous

Tours of the HP Garage

Look for the flyer in this newsletter about upcoming opportunities to visit true HP history. The third Thursday of July and October 2014 are the **LAST** offerings for a free one and one half-hour tour of the HP Garage in Palo Alto, HP's first business site.



Bowling for fun! *By Carol Nakamoto*

Come join us at Homestead Lanes at 20990 Homestead Road, Cupertino. It's always the 2nd Monday of each month. Price is \$8.00 per person for 2 games (plus \$4.00 for shoe rental).

The next few bowling events are **May 12, June 9 and July 14** from 11:00 a.m. - 12:30 p.m. If interested, contact Carol Nakamoto at carol_nakamoto@hotmail.com or 650-941-3678.

Hikes in June and July *By John McCabe*



Portola Redwoods State Park	Tue. Jun. 10, 10 a.m. Rainout, Tue. Jun. 17, 10 a.m.	Cost: \$3 for the carpool drivers, plus about \$10 per car entrance fee	Leader: Jim Holl 408-446-2963
<p>Meet at the Usual Carpool Location* or drive to Portola Redwoods State Park via Page Mill Road, across Skyline to Alpine Road and then left onto Portola State Park Road. Allow 75 minutes from Palo Alto. Hike should start about 11a.m. from the park headquarters. Bring your parks pass if you have one.</p> <p>This is one of the best redwoods parks in the state system. It is known for majestic redwoods, pretty creeks, deep shade and tranquility. We will visit the old tree which is very large, Iverson's cabin which is no longer there, Tiptoe Falls which is small, and a very nice nature trail. Bring water, lunch, and sunscreen.</p> <p>Length: 4 miles, Duration: 3.5 hours, Difficulty: Moderate. No dogs. Not wheelchair accessible.</p>			
Lake Elizabeth Lite Hike	Wed. Jun. 18, 10 a.m. No rainout date	Free	Leader: Ray Spoelman 510-797-0265
<p>Meet at The Boat House at Lake Elizabeth, 40000 Paseo Padre Parkway. From Hwy 880, take Stevenson Boulevard NE, turn right on Paseo Padre Parkway. Parking is available near the Boat House. Restrooms are available. Lake Elizabeth in Fremont's Central Park. The 83-acre lake is named for Fremont's sister city, Elizabeth, Australia. We will walk the 2-mile level loop on a paved trail around the lake and should see lots of wildlife. Bring water and sunscreen.</p> <p>Length: 2 miles, Duration: 1 hour, Difficulty: Easy. Dogs on leash OK. Wheelchair accessible.</p>			
Palo Alto's Foothills Park	Tue. Jul. 8, 10 a.m. Rainout: Jul. 15, 10 a.m.	Cost: \$2 for the carpool driver	Leader: John McCabe 650-328-3472
<p>Meet at the Usual Carpool Location* Foothills Park is open only to Palo Alto residents and their guests. For this reason, please do not drive there yourself. Rather, please meet at the Arastradero Preserve parking area where we will form car pools for the short (2.5 mile) ride to Foothill Park.</p> <p>Palo Alto's Foothills Park. Bounded by Portola Valley, Los Altos Hills, the Pearson-Arastradero Preserve and Los Trancos Open Space, the 1,400-acre Foothills Park is a nature lover's paradise. Miles of trails provide access through rugged chaparral, woodlands, fields, streams, a lake, and provide spectacular views of the bay. We will go up and down the equivalent of about 124 flights of stairs. Some areas are fairly steep; several have steps built into the trails. Hiking sticks are recommended. There are bathrooms at the beginning of the hike and near where we will eat lunch. Bring water, lunch, and sunscreen.</p> <p>Length: 6 miles, Duration: 3.5 hours, Difficulty: Moderately strenuous. No dogs. Not wheelchair accessible.</p>			
Devil's Slide Trail Lite Hike	Wed. Jul. 16, 10 a.m. No rainout date	Free	Leader: Eileen Ruppel 650-575-4264 (cell)
<p>Meet at the Usual Carpool Location* It should take about 45 minutes to reach the trailhead from the carpool location. There is limited parking at the trailhead. Please consider carpooling. We will park at south (Montara) end of the trail.</p> <p>This new section of the California Coastal Trail offers stunning views of dramatic rock formations and the crashing surf below. There are picnic tables, benches, restrooms and information kiosks. We will walk the 1.2 mile trail and return for a total of 2.4 miles. We'll have a picnic lunch. Bring water, lunch, and sunscreen. Wear comfortable walking shoes. Depending on the weather, it could be foggy and cool, or sunny and warm.</p> <p>Length: 2.4 miles, Duration: 3.5 hour, Difficulty: Easy. Dogs on leash OK. Wheelchair accessible.</p>			

* **The Usual Carpool Location** is the Enid Pearson Arastradero Preserve parking area. From I-280, exit on Page Mill Road and go SW for about half a mile. Turn right on Arastradero Road and go 1.2 miles. The parking area is on your right. Join your fellow hikers near the restrooms.

Hiking Email List: Updates, specifics and reminders will go out to the "HPREC Hiking Distribution List" about one week prior to the hike. If you are not on that list, contact John McCabe at leonaandjohn@att.net.



HPARV Volunteer News

hp.agilent.volunteers@hotmail.com

Volunteers Help the Santa Clara Valley Science Fair

By Pat Castro with pictures by John McCabe



Janet and Chuck Totman

Over 40 volunteers, including 18 Hewlett-Packard and Agilent retirees, helped make this year's Santa Clara Valley Science and Engineering Regional Science Fair one of the premier regional science fairs in the nation. Over 1,100 Santa Clara County students in grades 6-12 participated this year with 844 projects in physical science, biological science, engineering, math and computers. More than 400 scientists and engineers talked with the students about their work and selected the many projects for awards. Rose Mary Brodbeck organized all the volunteers; Pat Castro, a long-time science fair board member, serves as its Treasurer. If anyone would like to support this organization through a donation and/or participating in some volunteer tasks, please contact **Pat Castro** at pcastro35@gmail.com.



Kuo-Jung Chang



Kathy Kessler and Marilyn Gildea



Barbara Bowden



Back: Bert Laurence

Front: Ana Clark, Nancy Lem, Irene Wright, Rose Mary Brodbeck, Warren Taniguchi, and John McCabe

Also volunteering but not pictured: *Carol Arnett, Jim Beseau, Pat Castro, Blanca Guerrero and Marialis Seehorn.*

Hiking News *Compiled by Gary Ruppel*

Sawyer Camp Trail, South *By Jim Holl (leader) with photo by Bernard Bruand*

Eight hikers met on March 11 for this hike. Dry pavement, fairly flat terrain, and beautiful weather made for an easy seven mile walk. The picture was taken at the site of the Jepson Laurel tree which is the second largest laurel tree in California and is over 600 years old.

This hike featured shimmering water, views of mountains, waterfowl, deer, dusky-footed woodrat nests, and lunch at the Jepson Laurel. We also saw a red-headed woodpecker, many Indian warrior flowers (*Pedicularis densiflora*), and a few early hound's tongue flowers (*Cynoglossum amabile*). During the pre-hike on March 7, many frogs were heard in the late afternoon at the end of the reservoir.



To get there, please note that the normal entrance via the Bunker Hill exit is blocked due to construction. Instead, take the Black Mountain/Hayne Road exit. Turn left under Interstate 280 to Skyline and then left to the trailhead at Crystal Springs Road. Please note that dogs and pets are not allowed on the trail.

(L-R): Duncan Missimer, Jim Holl, John Kwan, Chris & Jade Simonson, and Dee Baily. Not pictured is Bernard Bruand.

Cloverdale Coastal Ranches *By Gary Ruppel w/photo by Jeanine Crider (POST)*

Another beautiful day in the Bay Area welcomed some 26 hikers to a docent led hike at the Peninsula Open Space Trust's Cloverdale Coastal Ranches property in Pescadero near Butano State Park. Gordon Clark led the hike and was assisted by Jeanine Crider. POST acquired this 6391-acre property in 1997. At the time, it was the largest unprotected property on the Central Coast. POST donated 900 acres to Butano State Park and sold some 500 acres, subject to a conservation easement, to the Muzzi family, who has been ranching there for generations. Much of the property is leased to sustainable local farming and ranching enterprises. Our hike took us through rolling grasslands, past reservoirs fed by Gazos Creek (yes, there was water in them) and viewed a restoration project aimed at wetland habitat improvement. Portions of the land are home to the San Francisco garter snake (*Thamnophis sirtalis tetrataenia*), an endangered species and the red-legged frog (*Rana draytonii*), a threatened species.



During our lunch break, Gordon and Jeanine informed the group about Measure AA, the Regional Open Space Access, Preservation and Restoration Bond. The Measure, to be placed on the June 3, 2014 ballot, would authorize the MidPeninsula Open Space District (MidPen) to issue \$300 million in

general obligation bonds to finance future enhancements, to connect regional trails and open space areas, to preserve open space, and to complete restoration projects.

Most, if not all, hikers present are from cities that support MidPen through a tax on assessed valuation. Several of the hikers offered their knowledge of MidPen.

To learn more about Measure AA, go to www.openspace.org/news/bond_measure.asp

To learn more about POST, go to www.openspacetrust.org/

Palo Alto's Professorville -- A Lite Hike Through History *By John McCabe*

Fourteen HPREC members and a guest enjoyed a Lite Hike on a beautiful last official day of winter. We walked around Professorville, Palo Alto, a historic district where, in the late 1800s and early 1900s, Stanford professors built houses. The hike started and ended at the Elizabeth F. Gamble Gardens. The house that was built in 1901 has lovely gardens around it. In addition to the professors' homes, we walked by the St. Thomas Aquinas Church. It is the oldest church in Palo Alto, completed in 1902.

We, of course, paid homage to the Bill and Dave garage at 367 Addison Avenue, which is in Professorville. If you would like to do this hike yourself, or just enjoy some time in the Elizabeth F. Gamble Gardens, the gardens are located at 1431



Waverley Street Palo Alto, CA 94301, at the corner of Embarcadero Road and Waverley Street. Cross Embarcadero to walk around Professorville. The historic district is bounded by Addison St. and Cowper St. to the northwest and northeast and Emerson St. and Embarcadero Rd. to the southwest and southeast.

(L-R): Sally Dudley, Chuck Sieloff, John McCabe, Shirley

Kwan, Bernard Bruand, Linda Paras, Barbara Beebe, Carol Arnett, Pam Bishop, KJ Chang, Fred Kohler, Bob Steward, Yoke Ping Bruand, Pat Wilcox.

City of Santa Clara's Ulistac Natural Area *By Barbara Beebe w/photo by John McCabe*

Ten Lite Hikers met at Ulistac Natural Area in Santa Clara on April 16 for a new adventure. Other than the leader, none had been there, or even knew of its existence. Ulistac is a historical wilderness area along the Guadalupe River, named for an Ohlone chief named Uliis. By an unplanned but happy coincidence, we were met the entrance by Dennis Dowling, a retired teacher now responsible for restoring the area to its original state. Dennis gave us a very informative tour, telling us about Ulistac's history, and showing us how he and volunteers are removing non-native plants and replacing them with others native to California. One interesting fact we learned about native plants was that something is always in bloom. When one variety finishes flowering, another starts blooming. This enables birds, bees and other creatures dependent on



flowering plants to get their nourishment all year long.

After our tour, we continued on trails in the area, then climbed up to the levee and walked along the Guadalupe River, then returned to where we started.

To get there from US-101, exit east at Great America Parkway, go about 1.3 miles and turn right on Tasman, where you will pass by the new 49er stadium – you can't miss it! Turn right on Lick Mill Blvd (1 mile). Ulistac Natural Area will be on your left.

(L-R): John McCabe, Jim Holl, Eileen Ruppel, Janis Andrews, Shirley Kwan, Fred Kohler, KJ Chang, Carol Arnett, Barbara Beebe. Not pictured is Cherie Baker.

RV/Camping with HPREC – Interested? *By John McGowan*

I have been building a list of HPREC members interested in possible RV weekends. If you are interested, please contact me by email at johnbmcg@aol.com. Any suggestions for weekend destinations? Let me know.

Sympathy

By Blanca Guerrero

HPREC Member, Consilia “Connie” Elizabeth D’Andrea, 86, passed away on February 9, 2014. Connie was born in Philadelphia, PA, attended the University of Pennsylvania and San Jose State University. After a career at the Philadelphia Savings Fund Society "PSFS," she held management positions at Hewlett-Packard, Menlo Park before retiring. She was the daughter of Joseph S. D'Andrea, of Capracotta, Campobasso, Italy and Philomena "Mamie" (nee Carugno); and sister of Dr. Vincent S. (predeceased) (Shirley, nee McFarland) and Joseph F. (Jo Ann, nee Daniels) of Orelan, PA. Connie is survived by cousins, nieces, nephews, grand-nieces and grand-nephews. *(Published on Philly.com on February 25, 2014)*

HPREC Member, Edmund Benito Pineda, 86, died on Sunday, February 23, 2014. He was born in Jackson, California on January 28, 1928 and lived most of his life in Santa Clara Valley. After serving four years in the US Air Force, Ed worked at Hewlett-Packard Santa Clara Division over 30 years before retiring. Ed is survived by his wife Lorraine and daughters Paula and Lori. *(Published in San Jose Mercury News/San Mateo County Times on March 1, 2014)*

John Cameron McCulloch, 71, passed away on February 28, 2014. John was born in Los Angeles, CA in 1942. He graduated from Hollywood High School and Occidental College with a degree in physics and obtained a M.S. degree in chemistry from Oregon State University. John worked at Fairchild, NEC and Agilent/Hewlett-Packard/Avantek for 35 years. Upon retirement, he became involved in community activities, including serving on the Santa Clara County Grand Jury and volunteering at the Willow Glen Senior Network. John is survived by his wife, Lucy Vela; his children, Evan McCulloch (Corrina) and Licia Maclear (Michael); his grandchildren, Grace, Julia and Sadie McCulloch; and Mason and Ella Maclear. *(Published in San Jose Mercury News/San Mateo County Times on March 5, 2014)*

HPREC Member, Al Furtado, 80, passed away on March 1, 2014 in Mountain View, CA. Al was born in San Jose on July 26, 1933. Al graduated from Fremont High School, class of 1952. Following high school he joined the Air Force and served our country in Korea and Japan. Upon his return, Al joined Hewlett-Packard where he worked for forty years. After starting in Palo Alto working directly for Dave Packard, he retired from the Sunnyvale plant on Arques Ave. in 1997. Al is survived by Pat, his wife of 55 years; his daughter Sheree; his two granddaughters, Dr. Sarah Crilly, DVM and her fiancé Griffin, and Samantha and her husband Justin. His father, Joe; his mother, Frieda; and his brother John and his wife Carol, preceded him in death. *(Published in San Jose Mercury News/San Mateo County Times on March 6, 2014)*

HPREC Member, Donald Watson Larke, Jr., 91, passed away on Thursday, March 20, 2014 in Redwood City, CA. Don was born on September 13, 1922 in Tulsa, Oklahoma, and lived in San Mateo County for 85 years. He was retired from Hewlett-Packard, where he worked as a line supervisor for over 30 years. Preceded in death by his daughter Michelle Walker; survived by his wife of 65 years, Marianne; his children Gaye (Ken) Harte, Suzanne (Robert) Ornelas, Janine (Philip) Small, Mary (Richard) Wuydts, Donald "Bernie" (Maribel) Larke, Victoria (Peter) Wipfli, Daniel (Pamela) Larke and Lisa Rodrigues; his 17 grandchildren and 25 great-grandchildren. *(Published in San Jose Mercury News/San Mateo County Times on March 23, 2014)*

Gloria M. Carlee (Weseman), 86, passed away on December 22, 2013 at her son's home in Los Baños, CA. Gloria was born August 17, 1927 in Mountain View, CA. She retired after 30 years with Hewlett-Packard in Santa Clara, CA. Gloria was predeceased by husband Neal Carlee; son Michael Carlee; daughter Sandy Carlee Hull; grandsons Michael Ray Carlee, Eric Hull, Matthew Hull; her parents Arnold and Mildred Weseman; and brother Russell Weseman. She is survived by sons Barton Carlee (Lorraine) Santa Clara, CA, Russell Carlee and Kevin Carlee, Los Banos, CA; son-in-law Tim Hull, Tennessee; grandchildren Richard Carlee, Amy Morley (Dave), Heather Burger (Kelly); great-grandchildren

Tony Gilbert, David Morley, Eric Hull, twins Carleigh and Alison Burger, Lilly Carlee; brother Wellesley Weseman (Pearl) San Jose, CA; sister-in-law Joan Weseman (Nampa, Idaho); and many nieces and nephews. (*Published in San Jose Mercury News/San Mateo County Times on March 23, 2014*)

HPREC Member, Dave Kirby, 89, passed away on March 15, 2014 in Portola Valley, CA at the Sequoias retirement community. Dave was born in San Francisco in 1924. During World War II he served in France and Germany as a staff sergeant in the 89th Infantry Division, a unit of General Patton's Third Army. Following the war, he attended the University of California at Berkeley, serving as sports editor of *The Daily Californian* and president of Sigma Nu fraternity. After graduation in 1949, he held several reporting and public relations positions before joining Hewlett-Packard. At the request of David Packard, he started HP's Public Relations Department in 1962 and managed it for 27 years. Under his direction, the corporate-based department grew to have offices and staff in all the major countries throughout the world. Dave was predeceased by his wife Anne in 2010. He is survived by his sons Daniel and John; and daughter Rachel Fitzgibbons and their families. (*Published in San Jose Mercury News/San Mateo County Times on March 23, 2014*)

HPREC Member, Lawrence Johnson, 89, died on March 22, 2014 in his home in Los Altos, with his children at his side, surrounded by the jazz music he loved. Larry was born in 1924 and began working for Hewlett-Packard in 1956. He retired from HP after 30 enjoyable years as a materials engineer, and later worked in the same capacity at Trimble Navigation, eventually retiring 3 more times. Larry had lived in Los Altos for 57 years at the time of his passing, and was a member of the HP Retired Employees Club, Beta Theta Pi fraternity, and the Society of Stukely Westcott Descendants. Larry is predeceased by his wife Esther (Wilson) Hanson; his brother Lewis R. Johnson; and sisters Elizabeth W. Johnson and Marian Chase. Larry is survived by three children and five grandchildren; son Douglas S. Johnson of Mountain View (Alexander, Victoria, Jack, all of Sunnyvale); daughter, Elizabeth R. J. M. Mamer (Phillip) of Caldwell, ID (Duncan, Annapolis, MD, and Derrick, Moscow, ID); and stepson Bradley W. Hanson of Cobb, CA. (*Published in San Francisco Chronicle on April 11, 2014*)

Don Cunningham, 62, died in Sacramento, CA on April 10, 2014. He was born in Montreal, Canada, studied electrical engineering at Sir George Williams (now Concordia) University for a year, and later decided electronic technology was more to his liking. His first job was at Burroughs, a computer company, and not long after he was lured to San Francisco by Tandem Computers, which later became Hewlett-Packard. Upon moving to San Francisco, Don continued to explore and his curiosity drove him to many adventures around California. He loved Napa Valley, Lake Tahoe, Marin County, Muir Beach, and Sacramento, where he fell in love with Dawn in July 2002. Don became a very important person in Tracy's, Whitney's, and Amy's lives and helped Dawn to guide them through life. (*Published in HPAA Remembrances on April 14, 2014*)

Emery H. Rogers, 92, passed away on March 28, 2014. An early pioneer of Silicon Valley, he embodied the true spirit of the Valley with his vast intellectual curiosity, philanthropic nature, kindness and intelligence. In 1949, Emery joined Varian Associates, one of the Valley's first tech companies. Emery completed his doctorate in physics at Stanford in 1951. He joined Hewlett-Packard in 1967, managing the international Analytical Instrument Group. In 1979, William Hewlett and David Packard asked him to institute a charitable foundation for the company, which he managed until 1986. Emery is survived by his wife, Nancy, his three children, Emery Rogers of Gilroy, Meredith Callahan of Boulder, CO and Anne Wager of Seattle, WA; five stepchildren: Gay Freeborn of Brownfield, ME, Tricia Christopher of Oakland, Nancy Freeborn of San Francisco, Charles Freeborn of Portland, OR and Philip Freeborn of Berlin, Germany; four grandchildren: Catherine Callahan Nichols, Emery Wager, Abigail Wager and Lily Rogers; two great grandchildren: Camille Sylvie and Elsie Marie Nichols; and four step-grandsons: Brian and Dylan Christopher and Philip and Alexander Kurz. (*Published in San Jose Mercury News/San Mateo County Times on April 14, 2014*)

Janet Elena Kline, 85, passed away on Thursday April 17, 2014 at her home in Los Altos Hills. Born Janet Elena Giacomazzi in San Jose, California to the late John Edward and Gelia Elena Giacomazzi, Janet went to San Jose State where she received her bachelor's degree in education. Janet received her master's degree in education from Stanford,

where she met her future husband, David Kline (HPREC member). After graduation, Janet taught math and science in middle school for two years before marrying David in 1953. Janet is survived by her devoted husband of over 61 years, David Stuart Kline of Los Altos Hills, her brother, John E. Giacomazzi (wife Elsie) of San Jose, her daughter, Jennifer J. Kline (husband Juan Sacristan), and granddaughter, Camille M. Sacristan of Napa Valley, her daughter, Cynthia M. Cook (husband John E. Cook) of Santa Clara, and her son, Ronald D. Kline of San Jose. *(Submitted by John McGowan and published in San Jose Mercury News/San Mateo County Times on April 22, 2014)*

To place a notice or provide information about HP retirees who you know, please write to Blanca Guerrero, 1139 W Remington Dr, Sunnyvale, CA 94087 or email to bn.guerrero@NU-RIS.com

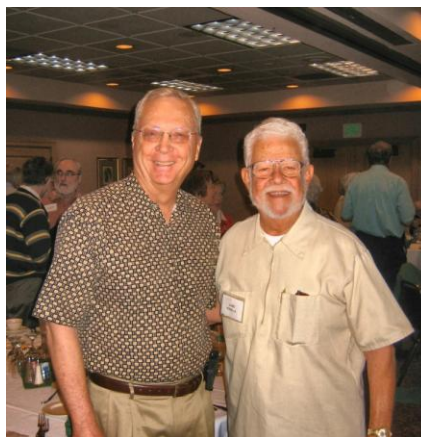
Additional Spring Fling Luncheon Photos



(L-R): Mark Allen, Orrin Mahoney, Homer Wong, Blanca Guerrero, Shiela Robertson, Betty Sox and John McGowan



(L-R): Cort Van Rensselaer, Sally Dudley, Chuck Sieloff, and Joe Rodgers



Bob Steward and Gabe Bonilla



*Lynn Cortes and Harold Kaye
at the check-in table*