

## President's Message

By John McGowan  
HPREC President



Wow... It is now 2013, and I am still getting used to writing 2012 on my checks...and writing checks is so 2010. It certainly seems like the clocks move faster as we move a little slower each year. It was terrific to see so many members and friends at our Holiday Luncheon this year. Special thanks to Harold Kaye and our other volunteers who helped with all of the planning and arrangements for the event, which was attended by more than 200 guests. Also special thanks to Debby McIsaac and HP and to Steve Beitler and Agilent for their generous donations of prizes for the raffle drawings. In addition to the HP printers and logo merchandise, and the gift cards, the See's candy boxes were very much appreciated as well. We also recognized new member recruiters Curt Gowan (from the HP Alumni Association) and James Taylor.

Homer Wong has provided a summary of the Holiday Luncheon in his column, but I also wanted to acknowledge and thank our guest speaker Debby McIsaac from HP. During our lunch-table conversation ahead of her presentation, it became clear that she and Meg and other HP executives understand the challenges of regaining the loyalty, trust and enthusiasm of the hundreds of thousands of HP employees worldwide. For many retirees, watching HP over the past ten years has been difficult, as industry pressures and leadership decisions have left the "HP Way" we all remember so well under stress. Debby referred to HP's Brand as an employer, and business experts often claim that rehabilitating a troubled brand is more difficult than building a new one from scratch. With intense competitive challenges facing all three of their major lines of business (Printers and Ink, Laptops and PCs and Large Computer Servers and Networking), HP truly needs an energized work force to return the company to its former industry leading position.

As a corporation, HPREC considers the Holiday Luncheon to be our annual meeting, and so we touched on a number of financial and operational details during the presentations after lunch. For those unable to attend, here are some of the highlights of 2012 and our plans for 2013:

\* The final numbers for membership renewals aren't in yet, but the Club will enter 2013 with approximately 1300 members, down slightly from 2012. Quite a few of our members live outside the Bay Area by now, but they enjoy remaining in contact through our newsletter and directory.

\* Financially, the Club completed fiscal 2012 (ending October 31st) with a loss of ~ \$5,000, which was consistent with the financial plans adopted by the Board. Income of ~\$15K and expenses of ~ \$20K were very close to budgeted amounts. Members should be aware that their current dues essentially cover only the costs of producing and mailing newsletters and the member directory. Other expenses, from insurance to the three subsidized events are paid via cash surpluses from prior years.

\* The Club plans to continue our three major events in 2013 (Spring Fling on March 12th, Summer Picnic in June and Holiday Luncheon in December), and will again subsidize these for our members to keep the costs reasonable. In addition, we hope to continue and expand our additional activities, from hiking and bowling to golf and travel programs. We are open to proposals for new activities.

\* Our Web site improves each year, and we are building plans to further enhance our capability to do transactions online, in addition to traditional communication functions. We'll be looking for ways to increase additional electronic communications with our members in 2013 as well. HP's new Continuum Web site is open and growing, and looks like a positive step toward additional engagement with retirees as well.

The Board and I are looking forward to making 2013 a rewarding year to belong to the Club, and we hope our members continue to be active in volunteering and participation in Club activities! Feedback and suggestions are always welcome. Best wishes for a great new year!

## Homer's Place

By Homer Wong, Board Member and your HP Liaison

### Annual Holiday Luncheon

This year we changed things up a bit and held our Annual Holiday Luncheon at the Portuguese Fellowship Hall in Mountain View. It was a beautiful sunny day, and we had over 200 people attend the event. It was a great time for everyone to connect with old friends and catch up with each other's lives. John McGowan, our President, was the MC and he kept the program on schedule.

Our guest speaker was Debby McIsaac, Vice President in Human Resources at HP. Debby leads the Global Recognition & Engagement Center of Excellence, seeking to create an environment where people can do their best work, feel fulfilled in their jobs and proudly recommend HP to others—all while supporting HP's success and long-term mission. In her presentation, she spoke about how, in many ways, HP is returning to the practices that made HP such a great company in the past. She also spoke about HP Continuum, HP's new social network. Included at the end of the article is more information about it and how to register. Debby also made a generous donation of HP raffle prizes that were appreciated by all the winners.

Following are a few photos from the Holiday Luncheon.



*John McGowan, HPREC President*



*Debby McIsaac, guest speaker from HP.*



*Lucky recipient of a door prize being congratulated by Paula Hoelker-williams.*



*Barbara Trone enjoying her prize.*



*Betty Gerard, another prize winner.*

Online readers can click the following link for access to additional Luncheon photos.  
<https://www.dropbox.com/sh/v8tzy45zafyj1u5/m4qGhZkxpU>

### HP Continuum

HP is introducing a new social network called HP Continuum.

- **Share perspectives** with other retirees on anything from medical coverage to tax questions to volunteering and ways to give back to the community.
- **Find out about** retiree events, opportunities to discover new activities.
- **Enjoy exclusive services for retirees** - discounts on HP products and services and access to a whole range of professional and personal resources.
- **Keep up with HP news** - and feel proud that you helped build this iconic company.

For more details and to join the site, go to <https://hp.alumniprogram.com/registration/claim/retiree>  
Then, log in as often as you like at <https://hp.alumniprogram.com/login>

- Take a Wellness Assessment to start taking charge of your health.
- Make the most of your HP benefits. Together, you and HP can improve your and your family's health and well-being.

## Additional Luncheon Photos – whom do you recognize?





## HPREC Hiking News

Compiled by Gary Ruppel

### Ed R. Levin County Park

By Jade Simonson w/photo by  
John McCabe



The weather was at its best for the November hike at Ed R. Levin County Park on Tuesday, November 13. It was gorgeously sunny but not excessively hot, and nineteen hikers came to enjoy the trails and scenery. It also marks the first visit for the group at this particular regional park.

At the high point along the Tularcitos Trail, the view over the valley was expansive, although the summer haze made it difficult to discern too many individual landmarks. We stopped for lunch at the Spring Valley picnic area before heading back along the Nature Trail, which was pleasantly shaded. We were to take the Calaveras Ridge Trail back, but decided to seek shade from the midday sun along Downing Road. A few of us spotted some wildlife; a red-tailed hawk, a deer, wild turkeys, a sunning turtle, and a turkey vulture. Adding to the show were several hang gliders enjoying the thermals emanating from the valley floor. As always, John McCabe took photographs, including the group photo shown here. Thanks!



*Pictured in the back row (L-R): John McCabe, Stan McCarthy, Herb Knoesel, Chris Simonson, Billie Abrams, Marcia Adams, Jim Holl, Eileen Ruppel, Chuck Sieloff, Ed White, Bernard Bruand, Janis Andrews, Pat Wilcox, Hal Eubanks. Front row (L-R): Jade Simonson, Martha Maris, Marsha Baird, David Pascual, Ellen Tafteen.*

For those who would like to do this hike on their own, a park map can be downloaded from the Santa Clara County Park Web site.

### **Getting there:**

Traveling on either Interstate I-680 or I-880, take the Calaveras Road exit toward Milpitas. Follow Calaveras Road east to the foothills where you will see signs for Ed

Levin County Park. Turn left on Downing Road and follow it to the end of the road past Sandy Wool Lake. There are two large parking areas, the lower parking area and the upper parking area past the Dog Park. Tularcitos Trail is across Downing Road from the parking areas. Restrooms are available close by.

### San Jose City Walk – Guadalupe River Trail

By Gary Ruppel (co-leader), with portions of text by the real leader, Ed White. Photo by Larry Byler

December can be an “iffy” month for hiking weather; however, the 13<sup>th</sup> arrived, and a great day was to be had for our hike on the Guadalupe River Trail in San Jose. Eight out of the nine of us arrived via Caltrain on either the “milk run” or the “baby bullet” at the Diridon Station in downtown San Jose. One lonely soul arrived by car. From the station we embarked upon a walking review of the past, present and future of downtown San Jose.

The Guadalupe River rampaged through downtown San Jose for hundreds of years. It was the primary reason the California state capitol moved out of San Jose in the 1850s. After many unsuccessful “fixes”, the massive \$250M Guadalupe River Flood Protection project was completed in 2004. The project included parks, gardens, trails and environmental restoration along the river between I-280 and I-880. Eventually, trails will connect Almaden Valley to Alviso.

We stopped for a group photo at the Thomas Fallon House (1854). Fallon was a controversial figure, having led a group of volunteers which seized San Jose from the Mexicans. He served as San Jose’s tenth mayor.



*(L – R): Dee Bailey, Gary Ruppel, Ed White, Janis Andrews, Herb Knoesel, Chuck Sieloff, Eileen Ruppel, John McCabe.*

Our six-mile long route included sculptures and works of public art, historic sites and signage, plus interesting environmental notes on wildlife habitat management. Midday, we moved away from the river and, after having a lively discussion about the lunch time fare, settled on

Gordon Biersch since several of us expressed a strong desire for a beer. After lunch, some of us continued on for a bit further on the river walk whilst others headed for the station in order to get home in time for other obligations.

For more information about the walking route, please go to the Web site below. Here you will find maps and a walking tour guide.

<http://www.grpg.org/archives/maps/guadalupe-river-park-gardens-walking-map>

## MEMBERSHIP DRIVE

By John Weidert, Membership Chairman



Thanks to all for your help in increasing our membership numbers. We have seen a slight uptick in our numbers, but we continue to need your support in

bringing in even more members.

We have prepared an informative, colorful brochure highlighting the key activities and benefits that come with being a member of HPREC. This brochure is available on our Web site. Go to [www.hp.com/retiree](http://www.hp.com/retiree) (new look), **highlight Stay Connected**, **click Retiree Clubs**, then **click Bay Area**. You can find the links to the brochure and HPREC Enrollment Form on our Club home page. Both forms can be printed, but if you would like to have me send you some printed copies of either document, just let me know.

As mentioned in previous articles, HPREC will be offering two **\$50.00** gift certificates to be given to drawing winners at our Holiday Luncheon in December 2013. Each name entered (with dues paid) will put your name in the drawing pool; bring in more than one member and you will have your name added to the pool an additional time. Bring in three new paid members and get three chances to win, etc. All entries from Nov. 1, 2012 to Oct. 31, 2013 will be eligible.



The new member should write your name on the Enrollment Form for you to qualify. (If you have already referred new members who have joined and paid, just send me a note to that effect). All members of the Club are eligible to win (except the Membership Chairman). One winning certificate per member. You need not be present at the Luncheon to win.

Let's continue our momentum and bring our membership level back up! You will be doing the new member and the Club a real favor.

Questions or comments?

E-mail me at [jweidert2@gmail.com](mailto:jweidert2@gmail.com).

## Recruiting update

On November 9, HPREC, along with several suppliers of services including First Tech Federal Credit Union, were invited to participate in an HP Retiree Fair held in the Building 20 cafeteria.



*Derrick Forties, FirstTech Palo Alto Branch Mgr.*

John McGowan, Carol Nakamoto and I represented HPREC, and we were ready to help the recent retirees join our Club. We brought with us Club brochures and membership applications and just had a great time talking to our former colleagues and signing up new members. (See picture on next page.)



John Weidert, Carol Nakamoto, John McGowan

We signed up 17 new members at the fair, and that was the single largest sign-up event that we have had. It was a lot of fun and very rewarding!

I want to thank Carol Nakamoto and John McGowan for their participation at this event.

Thanks, John

## From the Editor

Did you pay your **2012-2013 dues**? If so, thank you! If not, and your dues are not received by February 1, your name will not appear in the Membership Directory coming out in February, and you will not receive subsequent newsletters. These documents are great references for maintaining contact with your fellow HP/Agilent retirees and for keeping current on events and activities. And, the cost is very low. Stay with us - we have a lot of fun!



*Deihleen*

## HP Executive Customer Relations is hiring!



HP Executive Customer Relations (ECR) in Palo Alto is looking for additional staff in their support center which responds to customer inquiries addressed to the CEO and other HP executives.

If you are interested in learning more about the ECR's part-time/full-time opportunities, please contact Claudia Tetreault at

1-650- 857-8808 or e-mail your qualifications/resume to [claudia.tetreault@hp.com](mailto:claudia.tetreault@hp.com).

*Note: The ECR department has been staffed in part by retirees and former employees for a number of years; they asked us to make this opportunity known to our Club members.*





## RETIREE VOLUNTEERS

hp.agilent.volunteers@hotmail.com

### Sunnyvale Community Services

By Marialis Seehorn

While holidays are traditionally the time for giving, some 15 HPREC members got an early start one November morning at Sunnyvale Community Services (SCS).

Volunteers worked in small teams to assemble hundreds of bags of donated foodstuffs for distribution to low income families and seniors. The bags contained a variety of fruits and vegetables, juice and small servings of meat or poultry as well as coupons for purchasing additional food at local stores.



Gordon Mullin and Chuck Leath provided additional veggies and fruits to SCS clients.



Lettuce entertain you!  
Irene Wright, Marsha Lee, and Ursula Spratz.

The smiles of gratitude on recipients' faces gave everyone a feeling of satisfaction for our efforts. Many thanks to everyone who volunteered!



Front row (L-R): Marialis Seehorn, Chuck Leath, Gordon Mullin. Standing (L-R) Cherie Baker, John McCabe, Pat Capshaw, Rose Mary Brodbeck, Nancy Lem, Chris Jimenez, Marsha Lee, Shirley Heger, Pat Fausett, Marian Cochran, Ursula Spratz. Not pictured: Irene Wright.

### Raising Money for Bay Area Teens

By John McCabe

More and more Bay Area teenagers are living without medical insurance; many of them are homeless as well. The Lucile Packard Children's Hospital Teen Health Van responds to these needs by making free medical and counseling services available in local communities for easy access by underserved teens. At the Bill Hewlett and Dave Packard Charity Golf Classic held in September, Shelia Highe, together with her team of volunteers, supporting organizations, and 118 golfers, exceeded their fund raising goals for this event by several thousand dollars.



The photo above shows Shelia presenting a check for \$27,000 to Dr. Seth Ammerman, Medical Director of the Teen Health Van at Lucile Packard Children's Hospital. The money will be used to continue providing needed services to deserving teens in San Francisco, San Mateo, and Santa Clara counties.

## Family Giving Tree Holiday Gifts

By Marialis Seehorn

For many local children, getting a "wanted gift" for the holidays isn't always possible. For many families, there is no money for holiday gifts. However, the Family Giving Tree (FGT) and thousands of local volunteers (including 20 from HPREC!), helped make this year's holiday gift giving a reality by donating their money, time and efforts to assure that over 60,000 local youth and needy seniors will have their gift wishes fulfilled. Many of our HPREC members consider this event one of their favorite holiday traditions, volunteering every year to help with the process. Your efforts are always very much appreciated!!



*Kneeling (L-R): John McCabe, Martha Maris, Marsha Lee, Fran Low. Standing (L-R): Pam & Sam Khoo, Janet & Chuck Totman, Nancy Lem, Olga Wholey, Eileen Ruppel, Jennifer Cullenbine (FGT Chief Elf and Executive Director), Carol Arnett, Marilyn Gildea, Gary Ruppel, Marialis Seehorn, Bruce & Marsha Baird, Herb & Gisela Knoesel, Gordon Mullin.*



*Pam and Sam Khoo help sort gifts.*



*Nancy Lem, Marilyn Gildea, and Olga Wholey take a break from counting and sorting returned gift ID cards.*



*Herb Knoesel with Maris? his furry friends!*

*Need a hand, Martha*



*Janet and Chuck Totman are two of our returning volunteers.*



# TRAVEL TALK - 2013

By Your Travel Committee



Your Travel Committee is excited about the plans for this New Year, and we hope we can get some additional members joining us for several fun excursions and trips. Please make note of some of the things to come!

1> February 28: Open Rehearsal at Davies Symphony Hall in San Francisco with lunch to follow (on your own) at The Ferry Building.

2> March 6: Drive Yourself Trip to partake in two tours: NASA Exploration Center and Moffett Field Historical Society Museum, with a no-host lunch at the Moffett Golf Club Café.

3> April 24: Asian Art Museum in San Francisco to see the Terracotta Warriors Exhibition from China. Tour will have head-sets. This will be followed by a private tour (with samples) of the TCHO Chocolate Factory at Pier 17. Finally, lunch in Chinatown at The Far East Café.

4> April 24-30: Trip to Washington, DC. A Collette Tour for HPREC.

5> September 24: River Cruise from Budapest to Amsterdam. We have 17 people signed up, and there is a wait list for cabins. If interested, sign up, as people always drop out as September gets closer.

6> December: *Beach Blanket Babylon* and dinner at Capp's in San Francisco.

7> Once a quarter: Garage Tours at the original HP on Addison Avenue in Palo Alto.

We are also working on a trip to Annie's Glass in Watsonville, a Civil War re-enactment, a planetarium program for the family, a baseball game with our World Series winning SF Giants, and a possible tour of Folsom State Prison Museum and the California Highway Patrol Training Center.

We had announced the formation of a special distribution list for HPREC Theatre Goers that

would speed up the long process. Response was, unfortunately, VERY low...but we have not given up yet. If you are interested in going to San Francisco for live theatre and dinners/lunches, please let us know. You must send your name, e-mail address, and phone number to Pat Fausett for inclusion in the fast-paced theatre group. We hope to get more people interested, so that we can try the new process very soon. (See previous newsletter for the written discussion about this new process.)

We are off to a good start for 2013, and we sincerely hope that you will join us on several adventures this year. The more members and guests we can accommodate on a trip, the lower the per-person cost will be! We need your participation in order to continue providing excursions and trips for our Club.

## HPREC Monthly Activities

By Lidia Donez

### Golf by Phil Smith



The 2012 golf season, which runs from March through October, passed by much too quickly. We averaged 21 golfers per tournament for the eight 'majors' of the year, with participation down slightly from last year. Our goal is to average 24 golfers per tournament, and I believe we can achieve that by (a) the return of some of our prior regulars who sat out the past year, and (b) new golf enthusiasts who would like to play with their HP/Agilent friends.

Part of the benefit of playing is winning lots of golf balls. Last year, we awarded 400 golf balls to the prize-winners for low net score, low putts and closest-to-the-pin. Now, if we could just award golf balls that have an imbedded GPS so that we would never lose them (except in those nasty water hazards).

The highlight of the season is the highly coveted Golfer of the Year award and the \$50 prize that goes with it. For 2012, the honors go to Rhonda Louie for the Ladies Flight, and to John McCabe, for the Mens Flight. Rhonda also had a very rare eagle at Spring Valley in May, and John has now won for the second year in a row, and the third time in four years. Congratulations to Rhonda and John for their great play throughout the year.

And now, with the 2013 season fast approaching, we need your participation to make these tournaments work for all the HP/Agilent retiree golfers and their invited guests. We have the same four challenging courses that we played this past year, with two plays for each.

Here's the schedule for 2013 (note: all tournaments will be on the third Thursday of the month, with the first call to tee at 10:00 a.m.):

Sunnyvale - March 21  
San Jose Muni - April 18  
Spring Valley - May 16  
Los Lagos - June 20  
Sunnyvale - July 18  
San Jose Muni - August 15  
Spring Valley - September 19  
Los Lagos - October 17

Please calendar the golf schedule for 2013, and get ready to vie for the coveted prizes, with your eye on the \$50 Golfer of the Year award. The Golf Flyer for the first tournament at Sunnyvale is in this newsletter, so be sure to sign up for the good times of HPREC Golf tournament play. See you there!

### **Tours of the HP Garage**

Look for the flyer in this newsletter about upcoming opportunities to visit true HP history. The second Thursday of the last month of every fiscal quarter (Apr, July, Oct., Jan.) offers a free one and one half-hour tour of the HP Garage in Palo Alto, HP's first business site.



### **Bowling for fun!** *By Carol Nakamoto*

Come join us at Homestead Lanes at 20990 Homestead Road, Cupertino. It's always the 2<sup>nd</sup> Monday of each month. Price is \$6.00 per person for 2 games. The next few bowling events are **January 14, February 11, and March 11** at the new time of 11:00-12:30. If interested, contact Carol Nakamoto at [carol\\_nakamoto@hotmail.com](mailto:carol_nakamoto@hotmail.com) or 1-650-941-3678. All skill levels are welcome.

\*\*\*\*\*

### **February/March Hiking Schedule**

*By Ed White*

**Date:** Tuesday, February 12, 2013  
**Rainout date:** Tuesday, February 19, 2013

**Time:** 10:00 a.m.

**Hike Leader:** Ed White 1-650-964-1532

**Hike Location:** Huddart County Park (San Mateo). This is one of the former logging areas which is making



a rapid comeback with great second-growth redwoods and tanoak, coast live oak, bay laurel and Douglas fir. We should also see several types of fern, redwood sorrel and seasonal banana slug activity. With a thick overhead canopy and well-drained trails, this 16,000-acre park is perfect for hikes in the February fog and rain.

**Difficulty:** Moderate. About 4.5 miles and 900 feet cumulative elevation gain.

**Bring:** Water, lunch, rain gear (optional) and \$2.00 to reimburse carpool drivers.

**Meet at:** the usual carpool locations at the Arastradero Preserve parking area. Take I-280 and turn southwest on Page Mill Road. Proceed .5 mile to Arastradero Road and then go .5 mile to the Arastradero Preserve to form carpools. To go directly to Huddart Park, take King's Mountain Road out of Woodside. The Huddart Park entrance road is on the right. Get a parking permit at the entry kiosk (no charge for seniors) and meet at the Zwierlein Picnic Area.

\*\*\*\*\*

**Date:** Tuesday, March 12, 2013  
**Rainout date:** Tuesday, March 19, 2013

**Time:** 10:00 a.m.

**Hike Leader:** John McCabe 1-650-328-3472

**Hike Location:** Palo Alto's Foothills Park. Bounded by Portola Valley, Los Altos Hills, the Pearson-Arastradero Preserve and Los Trancos Open Space, the 1,400-acre Foothills Park is a nature lover's paradise. Miles of trails provide access through rugged chaparral, woodlands, fields, streams, a lake, and provide spectacular views of the bay.

**Difficulty:** Moderately strenuous. About 500 feet of elevation gain.

**Bring:** Water, lunch, and \$1.00 to reimburse the carpool drivers.

**Meet at:** the carpool location. Foothills Park is open only to Palo Alto residents and their guests. For this reason, please do not drive there yourself. Rather, please meet at the **Arastradero Preserve** parking area where we will form carpools for the short (2.5 mile) ride to Foothills Park. Take I-280 and turn southwest on Page Mill Road. Proceed .5 mile to Arastradero Road and then go .5 mile to the Arastradero Preserve. The **Enid W.**



**Pearson-Arastradero Preserve** parking area is on your right. There are bathrooms by the parking area.

\*\*\*\*\*

Wednesday, February 20, 2013 **"Lite Hike"**

Rainout date: None

**Time:** 10:00 a.m.

**Hike Leader:** Ray Spoelman  
1-510-565-2848



Hike Location: SF Bay  
National Wildlife Reserve,  
North. This hike will afford views of San Francisco Bay  
and its environs with lots of waterfowl as well as salt  
flats. The hike is quite flat and from 1-2 miles in length.

Directions: From South Bay, take I-880N, exit Decoto  
Rd/  
Dumbarton Bridge/84W, exit Paseo Padre/Thornton S,  
turn right 1/4 mile to the large parking lot on your left at  
the top of hill. From Peninsula, take Dumbarton Bridge  
(free direction), exit Thornton and see above.

If lost, call Ray at 1-510-565-2848.

\*\*\*\*\*

Wednesday, March 20, 2013 **"Lite Hike"**

Rainout date: None

**Time:** 10:00 a.m.

**Hike Leader:** Eileen Ruppel 1-650-494-0530

**Hike Location:** Palo Alto Baylands Nature Preserve.  
John McCabe led this hike last year. This is a chance to  
see natural and restored wetlands at the height of the  
migratory shore bird populations. We'll start at Byxbee  
Park, a former landfill, with its grassy hills and  
landscape art. We'll take a leisurely hike along the  
creeks and sloughs looking for birds and other wildlife.

**Meet at:** Byxbee Park. From Highway 101 (the  
Bayshore Freeway), take Embarcadero Road Northeast  
(toward the airport) until it ends, go right at the 'T'  
intersection, and then left into Byxbee Park.

\*\*\*\*\*



# Carol's Corner

By Carol Nakamoto, HPREC Web Communicator

## HP-related Retiree Web sites

...for HP and Agilent retirees

## The LATEST...

[www.hp.com/retiree](http://www.hp.com/retiree)

In November, HP released a redesigned retiree home page to be compliant with its intranet redo. The Web site is maintained by HP for its retirees and is also home to some information for Agilent and other legacy company retirees.



I will be spending some time after the holidays to familiarize myself with the new navigation paths to information. I will then update the front pages of your 2013 Membership Directory, the information found at the Club's Web site link, "Web site Introduction", as well as provide further guidance in future newsletters, including an explanation about how being a member of our Club, HPAA, and the new HP Continuum might benefit you. In the meantime, here are a couple of tips for finding information from the new home page.

At the URL above, click on the following banner **"tabs"** (under **Retiree Home**) to find:

**Overview** - home page; HP News links

**Stay Connected** - Retiree Clubs, HP Alumni Association & HP Continuum, HP's e-mail list, Facebook connection

**Benefits** - Medicare information, HP Benefits, Employee/Retiree Purchase Program (EPP), Vendor Discounts

**Contacts** - (not fully developed)

**Information Directory** - A-Z list (Site Map)

(not fully developed; broken links as of the writing of this article; will work with HP after holidays; hopefully fixed when you read this)

If you need to contact your former company or one of its benefit providers in the meantime, use your current 2012 Membership Directory as a resource.

[www.bayarea.hpway.org](http://www.bayarea.hpway.org)



### **Discounted Tickets for Stuff**

Go to this Web site and enter user name and password (*found in **Password** section on next page*) for a list of available discounted tickets for employees and retirees.

Click on Enter Bay Area Employee Programs. Then click on Bay Area EP eNews link to see the current newsletter (same u/n and p/w required). Some things are available to order online, and some require you to pick them up at the relocated HP Store (staffed by retirees).

### **HP Store**

#### **Recently Changed Location:**

3000 Hanover Street, Palo Alto, Lobby 20D (back of Bldg 20 HQ complex). Retirees can access this Lobby for discounted tickets.



**Phone:** 1-650-236-0525 (answered when staffed)

**Hours:** Wednesday through Friday from 11:30 a.m.-1:30 p.m., except HP holidays.

Here's a sample of discounted offerings:

#### **HP Pavilion:**

- **Disney on Ice "Dare to Dream"** – Feb 20-24 (*deadline to purchase Feb 18*)

#### **Tech Museum:**

- **Discounted tickets to MythBusters Interactive Exhibit** – thru June 2013

Refer to page 4 of your 2012 Member Directory for additional information.

[www.hpretirees.com/hprec](http://www.hpretirees.com/hprec)

Your HPREC Membership Directory outlines what's available on our Club Web site. Coming Events hosted by HPREC volunteers are updated routinely.

## **BASICS** – *New Members*

Refer to your HPREC Membership Directory for helpful material that includes navigation tips for:

- HP and HPREC Retiree Web sites (*will be updated in 2013 Directory for recently changed HP retiree home page*)
- Other helpful HP-related sites (discounts) and (HP Alumni)
- Passwords to all sites
- Stay Connected via E-mail

### **Stay Connected via E-mail...**

For retirees to receive periodic e-mails from organizations that fit your interests, you have **three** places to sign up: HPREC, HP, and HPAA. For privacy reasons, these cannot be shared.

*NOT receiving bi-monthly e-mails that your Club newsletter has been posted online?*

*NOT receiving periodic e-mails about important news that can't wait for the next newsletter?*

To sign up, go to our HPREC home page, on [www.hpretirees.com/hprec](http://www.hpretirees.com/hprec), go to Retiree e-mail List:

1) **If you have not yet added your e-mail address** to our secure online directory, **CLICK ON** "Add your e-mail address" and select your HPREC Member Options.

*Review these available member options. Use password information listed under HPREC below.*

**The Member Options allow you to choose to:**

**(a) stop receiving your paper version of the newsletter in the U.S. Mail and review it online in full color in one-column format; also saves postage costs for the Club.**

**(b) receive an e-mail notification (from me) each time a new newsletter has been posted to the Web site. We do not send the newsletter as an attachment (due to varying home computer capabilities).**

**(c) receive periodic e-mails from HPREC (maybe one message every month or two) with pertinent club-related news.**



2) ***If you previously added your e-mail address, CLICK ON "Change existing e-mail address or change member options."*** Make sure you've chosen ***"elect to receive an e-mail notification (includes passwords) when your newsletter is posted to the Club Web site."***

## **PASSWORDS**



***Keep this handy!***

**User names and passwords** to the secure areas of the different retiree Web sites are:

**HP** (News and Stay Connected sections) *and*  
**Bay Area Employee Programs** (Discounts):

User name: xxxxx Password: txxxxx

**HPREC** (online e-mail directory):

User name: xxxxx Password: xxxxx  
(ends in number, not letter)

**Passport Card:**

HP Code: xxxxx

**HP Branded Gear:**

Password: xxxxx

Note: If you are reading the newsletter online, we have deleted the user names and passwords from the newsletter for security reasons.

For this information, refer to our bi-monthly e-mail from [hprec-bayarea@hpretirees.com](mailto:hprec-bayarea@hpretirees.com), notifying you that the latest newsletter is online. If you are not receiving this e-mail from me, you have not chosen this as one of your options. Refer to **(b)** in the double-lined box on this page 12.

If you prefer to not opt-in to your Club's online e-mail directory, you can obtain the password information in the front pages of your Membership Directory.

# Sympathy

by Herb Knoesel

**Raymond A. Smelek**, 77, died on September 3, 2012 in Boise, ID. He joined HP's part-time student engineering pool in Palo Alto in 1957 and was hired full-time as a design engineer in 1959. The following year, he was promoted to Manufacturing Engineering Manager of HP's Microwave Division. Three years later, he became HP's Manufacturing Engineering Manager in Bedford, England. In 1965, Ray assisted in the site selection of South Queensferry, Scotland, and moved HP Ltd. from Bedford to South Queensferry. In 1967, Ray returned from Scotland and became HP Mountain View Division's Manufacturing Manager. He held many managerial positions over the next six years, and in 1973 he was asked by Bill Hewlett to manage a group with the mission of putting HP in the printer business. After visiting and considering several cities in the west, Ray selected Boise, Idaho, as the place to carry out that mission. Over the next eleven years, the Boise Printer Division, under his leadership as General Manager, developed a number of printer products culminating in 1984 with the introduction of the world's first laser printer, the LaserJet, which went on to become HP's most successful product to date. In 1985, Ray moved to England to manage HP's Bristol Division with the responsibility to develop a business technology charter. He spent three years in England and upon his relocation to the U.S., Ray was promoted to Vice President and General Manager of the Mass Storage Group, where he was responsible for several divisions and operations and marketing centers in the U.S., Asia, and Europe. After 37 years, he retired from HP in 1994. In 2010, Ray was honored as an inaugural inductee into the Idaho Technology Council's Hall of Fame. He is survived by his wife, Candy; children, Michael (Leslie) Smelek, Hockley, TX, Kathy (Brian) Minton, Steve Smelek, and Susan (Ken) Kaiser, Spring, TX; brother, Eugene (Betty) Smelek, Iowa; sister, Audrey (Carl) Fiechtl, CO.; grandchildren, Kerri, Bobby (Any), and Brian Smelek, Texas, Kyle, Ryan, and Tyler Farmer, Chase, Abbey, and Madison Kaiser, TX; and nephews, Joseph (Janis)

Smelek, IA, and Eugene (Molly) Fiechtl, CO.  
(*Idaho Statesman*)

HPREC member **Melanie van Vliet**, 64, passed away on September 11, 2012. She worked for 31 years at HP and later at Agilent. She is survived by her sister Shirley van Vliet of San Jose and two brothers. (*Submitted by Shirley van Vliet*)

**Gary Fazzino**, 60, a former Palo Alto mayor and two-time council member, died on October 30, 2012. He worked for 32 years in community relations and government affairs at HP, becoming Vice President of Government and Public Affairs in 2000. He left in 2009 to join Applied Materials as Vice President, Government Affairs. In his youth, he briefly dated Carly Fiorina, who later became the CEO of HP and Fazzino's ultimate boss. Characteristically, he made a joke about having a dubious tenure. Fazzino is survived by his wife, Annette Evans Fazzino, and twin 5-year-olds, Matthew and Julia. (*San Jose Mercury News*)

**Leon D. Castle**, 84, left this world on November 1, 2012. After serving in the US Navy as a young man he settled in California. He went to work for HP in the late 1950s and worked there for thirty + years until his retirement. Leon is survived by his wife of fifty one years, Betty Castle; daughters Karen Scarborough, Robin Hargett and Melinda Moore. Leon was a beloved grandfather to Tyler and Andie. (*San Jose Mercury News*)

HPREC member **Ronald C. Karns**, 61, passed away on November 7, 2012. A native of Oklahoma City, Ron and his family moved to Sherman Oaks, CA, where he lived during his grammar and high school years. He returned to Oklahoma City for college and law school. He briefly practiced administrative law in Oklahoma City, but decided to come back to California to work in the expanding high tech industries in the late 70's. He found his life's work in the Bay Area at HP. His job encompassed work with the HP facility in Grenoble, France and afforded many travel adventures, beginning a lifetime love of Paris. Ron leaves behind his wife, Jacquelyn Wilson, his mother, Jane Karns, brothers Larry and Jerry Karns (Mindy Goodman), his stepdaughters Christina Barlow (Steve Barlow) and Deborah Wilson (Chris Isert), as well as his two beloved grandchildren Cassie and

Scott Barlow, and numerous aunts, nieces, nephews, and cousins. (*San Jose Mercury News*)

**Bill Hunter**, 74, passed away on November 30, 2012. In 1959 he married Janis Fine while he was working for HP. Bill later worked for various small companies. Survivors include his wife of 53 years Janis Hunter of Rio Vista, son Robert (Vickie) Hunter of Manteca, two grandchildren Jason & Jessica Hunter of Manteca. (*San Jose Mercury News*)

**Mervin Mack**, 69, passed away on December 12, 2012. After graduating Campbell High School in 1961, he attended San Jose City College. Merv then embarked on what would become a life-long career at HP. He is survived by his wife Nikki (Totten) Mack, daughter Karen (Mack) Trumbo, 6 step-children, and 17 grandchildren. (*San Jose Mercury News*)

---

**To place a notice** or provide information about HP retirees that you know please write to Herbert Knoesel, 633 Phil Court, Cupertino, CA 95014 or e-mail to: [hp-rec@knoesel.com](mailto:hp-rec@knoesel.com).



**To change your mailing address or phone number with HPREC, contact:**

**John Weidert, Membership Chair**

**[jweidert2@gmail.com](mailto:jweidert2@gmail.com)**

**To update your e-mail address, see page 12.**

**To update your information with HP or Agilent, please refer to the 2012 Member Directory for instructions.**





# DENTAL PLAN CONTRACT RENEWAL

By Elizabeth Shen

Please be aware that the DeltaCare USA DHMO dental plan premiums have increased by 4.5% effective January 1, 2013. These *quarterly* rates are effective for 2 years:

<i>Effective Date</i>	<i>January 1, 2013</i>	
<i>Contract term</i>	<i>Two Years</i> <i>January 1, 2013 – December 31, 2014</i>	
<i>Percentage of increase in the current rates</i>	<i>4.5%</i>	
	<i>Current</i> <i>Quarterly Rates</i>	<i>Renewal</i> <i>Quarterly Rates</i>
<i>Employee</i>	<i>\$ 89.00</i>	<i>\$ 93.01</i>
<i>Employee + one dependent</i>	<i>\$140.58</i>	<i>\$146.91</i>
<i>Employee + two or more dependents</i>	<i>\$202.26</i>	<i>\$211.36</i>

HPREC's dental plan is administered by Delta Dental of California. You must be a member of the HPREC Bay Area Club and living in California to enroll. You can enroll in the plan by e-mailing [hprecdeltadental@gmail.com](mailto:hprecdeltadental@gmail.com) and providing the following information:

- Name
- Address

You will receive an application shortly thereafter.

You can learn more about the dental plan by visiting the HP U.S. Retiree Programs home page at [www.hpretirees.com](http://www.hpretirees.com). Click on **Bay Area** under the Retiree Clubs column on the left side of the page, and then click on the **Dental Plan** link.

You will be able to see the list of participating dental offices in Northern California, a summary of the program, as well as detailed benefits and copayments at the Web site.



## HPREC GOLF TOURNAMENT

**PLACE:** Sunnyvale Golf Course  
605 Macara Ave.  
Sunnyvale, CA 94085  
1-408-738-3666

**DATE:** Thursday, March 21, 2013

**STARTING TIME:** 10:00 a.m.

**COST PER PERSON:** \$37.00 (includes \$2 prize fund)

**NOTES:** Each HPREC member may invite one guest  
Pay for golf cart at pro shop when checking in

For further information, call:  
Phil Smith at 1-408-749-1656

**RESERVATIONS DUE BY:** Saturday, March 16, 2013  
Make check(s) payable to HPREC GOLF and mail, with this form to:

HPREC GOLF  
C/O Phil Smith  
802 Beaverton Court  
Sunnyvale, CA 94087

✂ -----cut here-----

## HPREC GOLF RESERVATION

Sunnyvale, March 21, 2013

**NAME**

**CART?**

**E-MAIL\*\***


\*\* Only if not on file





## **HPARV “Done-In-A-Day”**

### **Volunteer Opportunity**

**at**



RAFT, Resource Area for Teaching, is a nonprofit organization that believes hands-on teaching is the best way for teachers to teach and students to learn. They provide creative hands-on activities, educational resources, workshops and inexpensive materials (Hewlett Packard is one of their best contributors) to enrich pre K-12 education and community group programs. Their goal is to assist teachers, nonprofits and community groups by providing materials and ideas for day-to-day teaching and for supporting professional growth. Volunteering at RAFT is always fun! And you get to make great things that will enrich the lives of students.

**Date:     Wednesday, February 6**

**Time:     9:00 a.m. to 12:00 noon**

**Place:    1160 Kern Ave., Sunnyvale, CA 94085**

**RSVP:   [hp.agilent.volunteers@hotmail.com](mailto:hp.agilent.volunteers@hotmail.com)  
or call John McCabe at 1-650-328-3472  
by Friday, January 25**

**Directions and more information, go to:  
<http://www.raftbayarea.org/location-sobrato-center>**



## HPARV Done-In-A-Day Project

### Volunteers Needed To Help With Science Fair

(Science background not needed except for judging.)

HPARV invites you to join with many other volunteers in this year's **Synopsys Science & Technology Championship**. About 1000 students will be participating in the fair, and there are many ways you can help either day.

**What:** County-wide science fair for students in grades 6-12

**Where:** San Jose McEnery Convention Center, South Hall, San Jose

**When:** **Tuesday, March 12, 2013** – Student check-in and set-up  
(Lunch provided for all shifts' volunteers)

8:00 a.m. – 6:00 p.m.

(or 8:00 a.m. – 12:00 noon or 12:00 noon – 6:00 pm)

**Wednesday, March 13, 2013** – Judging day

(Lunch provided)

11:00 a.m. -- 6:00 p.m. (We need a few

volunteers around 9:00 a.m. to help set up judges)



### What's Needed?

#### 1. **General volunteers**

- \* **Tuesday:** Help students through the registration process, help them find their assigned space to set up their projects, run errands, etc.
- \* **Wednesday:** Help register judges, monitor the hall during judging, etc.

Tasks can be sitting, walking or standing. Indicate if you have a preference.

Send an e-mail with your name, phone number and time availability to: Rose Mary Brodbeck [rm\\_brodbeck@comcast.net](mailto:rm_brodbeck@comcast.net) or call Rose Mary at 1-650-968-4269; alternate contact is [carole@kalcic.com](mailto:carole@kalcic.com) or call Carole Kalcic, Fair Manager at 1-408-736-6616.

- 2. **Judges:** If you're interested in judging, go to [www.science-fair.org](http://www.science-fair.org), then go to Judges, and, under category judges, click on [category judges registration and information](#). Or send an e-mail to [4judging@earthlink.net](mailto:4judging@earthlink.net) with your name, phone number, address and brief scientific background, and the committee will enter you, asking for more information if they need it.

For further information, see the Science Fair Web site at:

**[www.science-fair.org](http://www.science-fair.org)**

**Previous volunteers at this event say it's fun and rewarding.  
Please volunteer. You'll be glad you did!**



**EVENT: HP Garage Tour**

\_\_\_\_\_person(s)

**Please indicate your preference of dates (1=1<sup>st</sup> choice; 2=2<sup>nd</sup> choice; 3=3<sup>rd</sup> choice):**

**January 17, 2013 (Q1)**\_\_\_\_\_

**April 18, 2013 (Q2)**\_\_\_\_\_

**July 18, 2013 (Q3)**\_\_\_\_\_

**PLEASE PRINT NAMES:**

Member Name \_\_\_\_\_ Phone (     ) \_\_\_\_\_

Spouse/Guest Name \_\_\_\_\_ Phone (     ) \_\_\_\_\_

*(Please CIRCLE if spouse or guest—is this person a member? ...YES...NO)*

Emergency Contact \_\_\_\_\_ Phone (     ) \_\_\_\_\_ Member

Emergency Contact \_\_\_\_\_ Phone (     ) \_\_\_\_\_ Guest

**REMIT TO: HPREC, P.O. Box 86, Mtn. View, CA 94042-0086**

**E-MAIL ADDRESS FOR TRIP CONFIRMATION** \_\_\_\_\_ **(Please print)**

-----**(cut here)**-----

## **A STEP BACK IN TIME!**

**Tours of the HP Garage began in  
October of 2010 and are conducted  
quarterly.**

**Tours will be limited to 10 Club  
members/guests per tour and you  
must sign up through HPREC.**

**Tours are free and start at 10:00 a.m.  
and last approximately one-and-a-half  
hours.**



**We will meet at 9:30 a.m. at HP in Palo Alto in the parking area by Bldg. 20's  
defunct carwash (off Hanover near the top of the hill).**

**For additional information or questions, please contact the Trip Leaders during normal business hours of  
9:00 a.m. to 5:00 p.m., Monday – Friday. Exceptions for emergencies only, please. Trip Leaders: Gail  
Eatock 1-408-446-0428 or [taichats2@att.net](mailto:taichats2@att.net) or Pat Fausett 1-650-941-7063 or [pat.fausett@sbcglobal.net](mailto:pat.fausett@sbcglobal.net)**





# *A Morning at the Symphony*



## SF SYMPHONY OPEN REHEARSALS—Davies Symphony Hall

**FEBRUARY 28, 2013**

**Cost:** \$45.00 per person by February 1, 2013

\$50.00 per person February 2 – 15, 2013 (if space available)

Deadline for reservations: Postmarked by February 15, 2013

*Coffee and complimentary donuts: 8:00 – 9:00 a.m.*

### **Katharine Hanrahan Open Rehearsal – 10:00 a.m.**

Pre-rehearsal discussion about the music and composers

### **Michael Tilson Thomas Conducts Mozart & Bruckner – 11:00 a.m.**

It would be hard to find two composers more unlike each other than Mozart, the prodigious prodigy, and Bruckner, whom success eluded until he was 60. Rising young soprano Nadine Sierra, fresh from her SF Opera debut, sings three arias from Mozart's unfinished opera *Zaïde*, fragments of which were found after his death. The trio of arias includes the exquisite *Ruhe sanft, mein holdes Leben*. The premiere of Bruckner's grand Seventh Symphony earned a 15-minute ovation. Its plaintive adagio is a tribute to his idol Richard Wagner, who at their final meeting declared Bruckner the equal of Beethoven.

**Lunch following the rehearsal:** We will be driven to the Ferry Building where you can grab lunch on your own and enjoy browsing all the shops.

For additional information or questions, please contact the Trip Leaders during normal business hours of 9:00 a.m. to 5:00 p.m., Monday – Friday. Exceptions for emergencies only, please. Trip Leaders: Don Higgins 1-408-736-1918 or [donald1090@comcast.net](mailto:donald1090@comcast.net) and Pat Fausett 1-650-941-7063 or [pat.fausett@sbcglobal.net](mailto:pat.fausett@sbcglobal.net)

-----cut here-----

EVENT: SF Symphony Rehearsals 2013 \_\_\_\_\_person(s) @ \$45.00 per person by February 1, 2013 = \_\_\_\_\_Total  
\_\_\_\_\_person(s) @ \$50.00 per person by Feb. 2 through Feb. 15 postmark = \_\_\_\_\_Total  
(PLEASE WRITE ONE CHECK PER EVENT)

#### PLEASE PRINT NAMES:

Member Name \_\_\_\_\_ Phone ( ) \_\_\_\_\_  
Spouse/Guest Name \_\_\_\_\_ Phone ( ) \_\_\_\_\_  
(Please CIRCLE if spouse or guest—is this person a member?...YES...NO)  
Emergency Contact \_\_\_\_\_ Phone ( ) \_\_\_\_\_ Member  
Emergency Contact \_\_\_\_\_ Phone ( ) \_\_\_\_\_ Guest

REMIT TO: HPREC, P.O. Box 86, Mtn. View, CA 94042-0086

E-MAIL ADDRESS FOR TRIP CONFIRMATION \_\_\_\_\_ (Please print)



**EVENT: NASA/MOFFETT MUSEUMS**      \_\_\_\_\_ **person(s) @ \$5.00 per person by no later than Feb. 11, 2013**

**PLEASE PRINT NAMES:**

Member Name \_\_\_\_\_ Phone (     ) \_\_\_\_\_

Spouse/Guest Name \_\_\_\_\_ Phone (     ) \_\_\_\_\_

*(Please CIRCLE if spouse or guest—is this person a member? ...YES...NO)*

Guest Name \_\_\_\_\_ Phone (     ) \_\_\_\_\_

Guest Name \_\_\_\_\_ Phone (     ) \_\_\_\_\_

**REMIT TO: HPREC, P.O. Box 86, Mtn. View, CA 94042-0086**

**E-MAIL ADDRESS FOR TRIP CONFIRMATION** \_\_\_\_\_ **(Please print)**

-----cut here-----

**DRIVE YOURSELF**  
**NASA EXPLORATION CENTER &**  
**MOFFETT FIELD HISTORICAL SOCIETY MUSEUM**

**(Limited to 40 people)**

**Wednesday, March 6, 2013**

**10:00 a.m. – 2:00 p.m.**

**9:45 a.m. NASA EXPLORATION CENTER**

**Free docent-led tour. (Meet just outside Main Gate for security check-in. Late arrivals will not be permitted on tours.)**

**Picture ID required to enter Main Gate.**



**11:15 a.m. Car convoy to Golf Club Café for no-host lunch. Reasonably priced menu starting at \$5.00.**

**We will be going through the second security gate which requires pre-approved entry.**

**12:30 p.m. MOFFETT FIELD HISTORICAL SOCIETY MUSEUM docent-led tour.**

**Historical displays: from lighter than air...to faster than sound...to outer space.**



- **Registration required and must be received by HPREC no later than February 11, 2013, as attendees have to be "pre-approved" to clear security gates.**
- **Open to members plus up to three guests.**  
**(MEMBER MUST BE PRESENT)**

For additional information or questions, please contact Event Coordinators during normal business hours of 9:00 a.m. to 5:00 p.m., Monday – Friday. Exceptions only, please. Event Coordinators: Gail Eatock 1-408-446-0428 or [taichats2@att.net](mailto:taichats2@att.net) or Lynda Robinson 1-408-292-9299 or [robinson.lynda@att.net](mailto:robinson.lynda@att.net)



# Annual **HPREC SPRING FLING** Luncheon

Tuesday, March 12, 2013  
11:00 a.m. No Host Cocktails  
12:00 p.m. Lunch

Mariani's Inn and Restaurant  
2500 El Camino Real  
Santa Clara

## Choice of Entrée:

- Corned Beef & Cabbage
- Filet of Sole Almandine
- Vegetarian Pasta Primavera

Entree served with fresh garden salad, French roll & butter, dessert, and freshly brewed coffee or tea

**GUEST SPEAKER: Ron Nersesian**  
**President and Chief Operating Officer, Agilent Technologies**

**Cost Per Person: \$25.00 by March 5, 2013**

**Late reservations (after March 5) or paying at the door is \$30.00 per person.**

For further information contact Harold Kaye 1-408-257-9629 or humyagkaye@aol.com

-----cut here-----

## EVENT:

Spring Fling 2013

\_\_\_\_\_ person(s) @ \$25.00 by March 5 = \$ \_\_\_\_\_ Total  
\_\_\_\_\_ person(s) @ \$30.00 after March 5 or paying at door = \$ \_\_\_\_\_ Total

**(PLEASE WRITE ONE CHECK PER EVENT)**

## PLEASE PRINT NAMES:

Member Name _____	Phone ( ) _____	
Spouse/Guest Name _____	Phone ( ) _____	
(Please CIRCLE if spouse or guest—is this person a member?...YES...NO)		
Emergency Contact _____	Phone ( ) _____	Member
Emergency Contact _____	Phone ( ) _____	Guest

REMIT TO: HPREC, P.O. Box 86, Mtn. View, CA 94042-0086

Choice of entrée:    \_\_\_ Corned Beef & Cabbage    \_\_\_ Filet of Sole Almandine    \_\_\_ Vegetarian Pasta Primavera



EVENT: Asian Museum \_\_\_\_\_person(s) @ \$70.00 per person by March 20, 2013 = \_\_\_\_\_Total  
Terracotta Warriors \_\_\_\_\_person(s) @ \$75.00 per person by March 21 through April 3 postmark = \_\_\_\_\_Total  
(PLEASE WRITE ONE CHECK PER EVENT)

**PLEASE PRINT NAMES:**

Member Name \_\_\_\_\_ Phone ( ) \_\_\_\_\_  
Spouse/Guest Name \_\_\_\_\_ Phone ( ) \_\_\_\_\_  
(Please CIRCLE if spouse or guest—is this person a member? ...YES...NO)  
Emergency Contact \_\_\_\_\_ Phone ( ) \_\_\_\_\_ Member  
Emergency Contact \_\_\_\_\_ Phone ( ) \_\_\_\_\_ Guest

REMIT TO: HPREC, P.O. Box 86, Mtn. View, CA 94042-0086

E-MAIL ADDRESS FOR TRIP CONFIRMATION \_\_\_\_\_ (Please print)  
-----cut here-----

## CHINA'S TERRACOTTA WARRIORS SAN FRANCISCO'S ASIAN ART MUSEUM

**WEDNESDAY APRIL 24, 2013**

**Limited to 35 people**

Cost: \$70 per person by March 20, 2013  
\$75 per person March 21 – April 3, 2013 (if space available)  
Deadline for reservations: Postmarked by April 3, 2013

Leave: Cupertino Vallco Parkway (behind JCPenney) at 8:30 a.m.  
Return: Cupertino Vallco Parkway (behind JCPenney) at 4:30 p.m.



### **“Terracotta Warriors: The First Emperor’s Legacy”**

*Exhibition featuring 120 rare objects from the great tomb complex of China’s First Emperor (259-210 BCE), including 10 life-size terracotta figures—the maximum number of figures permitted outside China in a single exhibition.*

**Self-guided tour with headsets**

### **TCHO Chocolate Factory at Pier 17**

**Tour and sampling.**



**Dim Sum lunch at Far East Café in SF Chinatown** Time to browse and shop in Chinatown before returning to Cupertino.

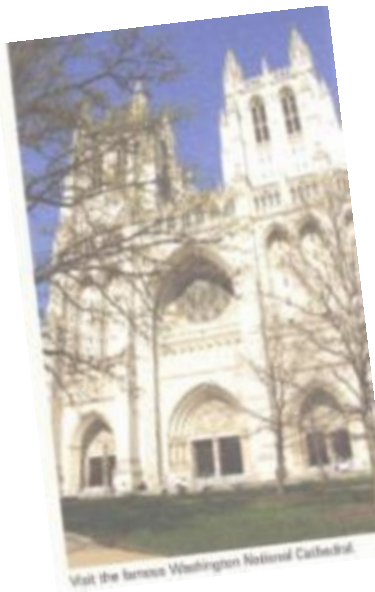
For additional information or questions, please contact the Event Coordinator during normal business hours of 9:00 a.m. to 5:00 p.m., Monday – Friday. Exceptions for emergencies only, please. Event Coordinators: Fran Low 1-408-245-4999 or [franmlow@gmail.com](mailto:franmlow@gmail.com) and Pat Fausett 1-650-941-7063 or [pat.fausett@sbcglobal.net](mailto:pat.fausett@sbcglobal.net)

# "CHERRY BLOSSOM SEASON IN WASHINGTON, D.C."



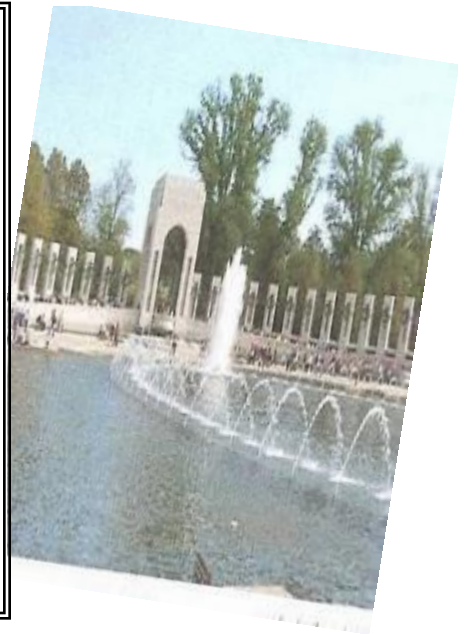
## EXPLORING AMERICA'S CAPITAL WITH HPREC

**April 24-30, 2013**



### TOUR HIGHLIGHTS

- ❖ 6 Nights in the heart of Washington, D.C.
- ❖ White House Visitor Center
- ❖ World War II Memorial
- ❖ Mount Vernon
- ❖ Arlington National Cemetery
- ❖ Smithsonian Institution
- ❖ Annapolis, Maryland
  - Walking tour of U.S. Naval Academy
- ❖ Baltimore, Maryland
  - Fort McHenry
- ❖ Washington National Cathedral
- ❖ Ford's Theatre



- Prices start at \$2464 per person based on double occupancy (single supplement \$600).
- Includes round trip air from San Francisco, air taxes and fees/surcharges of \$50 (subject to increase until paid in full), cancellation waiver and insurance of \$165 per person and hotel transfers.
- Deposit of \$415 per person includes cancellation waiver and insurance.

Please contact Donald Higgins at 1-408-736-1918 or [donald1090@comcast.net](mailto:donald1090@comcast.net) or Debbie Lum, Accredited Cruise Counselor, at 1-408-773-8332 or [dlum@cruiseplanners.com](mailto:dlum@cruiseplanners.com) for more information and to book your trip.

**HPREC invites you to sign up for a relaxing  
Legendary Waterways of Europe  
RIVER CRUISE  
FROM BUDAPEST TO AMSTERDAM**

**Lueftner Cruises, “Amadeus Silver”—a new ship which debuts April 2013**

**Departing September 27 – October 12, 2013**



**16 Days ● 41 Meals: 14 Breakfasts ● 13 Lunches ● 14 Dinners**

Lower Outside Cabin Rates: **Double \$5,999 pp**; Middle Outside Cabin Rates: **Double \$6,399 pp**  
Upper Outside Cabin Rates: **Double \$6,799 pp**; Suite Cabin Rates: **Double \$8,299 pp**

**Included in Price:** Round Trip Air from San Francisco Intl Airport, Air Taxes and Fees/Surcharges, Hotel Transfers  
**Not included in price:** Cancellation Waiver and Insurance of \$305 per person

**TOTAL AMOUNT DUE WITH RESERVATION: \$555 PER PERSON**  
\$250 deposit per person  
\$305 non-refundable cancellation waiver & insurance per person (cannot be added later)

**FINAL PAYMENT DUE: May 27, 2013**

**Valid passport required for travel**

**SAVE  
\$250 pp  
if booked  
by 3/27/13**

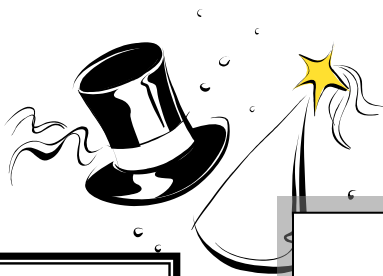
**DON'T MISS OUT! BOOK NOW**

Please contact Donald Higgins at 1-408-736-1918 or [donald1090@comcast.net](mailto:donald1090@comcast.net) or Debbie Lum, Accredited Cruise Counselor, at 1-408-773-8332 or [dlum@cruiseplanners.com](mailto:dlum@cruiseplanners.com) for more information and to book your trip.



**Hewlett-Packard/Agilent  
Retired Employees Club  
P.O. Box 86  
Mountain View, CA 94042-0086**

**Forwarding Service Requested**



**HPREC NEWS**

**Issue #86**

*Published bi-monthly*

**Editor:**

Deihleen Claffey

**Associate Editors:**

Lynn Cortes

Carol Nakamoto

Marialis Seehorn

***To submit articles:***

*HPREC\_News@yahoo.com*

***To view newsletters online:***

*www.hpretirees.com/hprec*

**Coming Events**

- |                   |   |
|-------------------|---|
| <b>Jan. 17</b>    | <b>Garage Tour, Palo Alto</b>               |
| <b>Feb. 6</b>     | <b>RAFT Volunteers, Sunnyvale</b>           |
| <b>Feb. 28</b>    | <b>Morning Symphony, SF</b>                 |
| <b>Mar. 6</b>     | <b>NASA Cntr./Moffett Field Museum Tour</b> |
| <b>Mar. 12-13</b> | <b>Science Fair Volunteers, San Jose</b>    |
| <b>Mar. 12</b>    | <b>Spring Fling, Santa Clara</b>            |
| <b>Apr. 18</b>    | <b>Garage Tour, Palo Alto</b>               |
| <b>Apr. 24</b>    | <b>Terracotta Warriors, SF Asian Museum</b> |
| <b>Apr. 24-30</b> | <b>Washington D.C. Trip</b>                 |