



# HPREC NEWS



Agilent Technologies

*Fun, friendship, service, memories for members of the Bay Area Hewlett-Packard/Agilent Retired Employees Club*

November 2010

Issue: #73

## President's Message

By Deihleen Claffey  
HPREC President



Welcome, one and all, to our 2010-2011 fiscal year! I'd like to begin my first message as Club President by thanking **Martha Maris**, our past president, for her leadership over the past two years. Martha oversaw process improvements, updating the bylaws, communication improvements and many other initiatives. Thanks, again, to Martha.

### New Directors

In addition to **Harold Kaye**, **Herb Knoesel**, **Marialis Seehorn** and **Phil Smith** being re-elected to the Board, we have one newly elected Board member: **Paula Hoelker-williams** and three new Board members elected by the Board to fill vacancies: **Kim Wisckol**, **Vicky Deggs** and **Bess Stephens**.

**Paula Hoelker-williams** worked at HP for 10 years in the Credit Union, later retiring from Addison Avenue's IT department.

**Vicky Deggs** retired from HP with 23 years of service, working in several HR positions in many organizations, including HP Labs, PSG, and Corporate.

**Bess Stephens** retired from HP with 26 years of service. She worked in positions spanning HR, Government Affairs, and Philanthropy & Education.

**Kim Wisckol** retired from HP after 26 years of service in various HR and IT positions here in the Bay Area and in San Diego.

### Outgoing Directors

I would like to thank our three outgoing Directors for their hard work and dedication for the time they served. It's only with the commitment from these volunteers that our club flourishes. Thank you to: **Fran Low**, who served twelve years as the Club's Treasurer; **Phyllis Hoff**, who served two years and chaired the Tech Team; **John Toppel**, who served one year and led the Marketing Committee.

If you have interest in becoming a Board member, please contact Homer Wong at [homer\\_wong@hotmail.com](mailto:homer_wong@hotmail.com).

Other volunteer opportunities in the club include:

- membership programs and administration, contact John Weidert at [john\\_weidert@scualum.com](mailto:john_weidert@scualum.com)
- community activities, contact Marialis Seehorn at [mseehorn@msn.com](mailto:mseehorn@msn.com)
- annual picnic, contact Harold Kaye at [humyagkaye@aol.com](mailto:humyagkaye@aol.com)

We also have an excellent Travel Committee, event coordinators and activity leaders who work hard to organize trips, events and activities for our members. And, so, I want to remind you to please mark your calendar for our upcoming **Annual Holiday Luncheon on Monday, December 13.** This is always a fun event where retirees can connect with other retirees that they don't often see. Don't forget - send in your reservation form (see page 17)!

I am very excited to be working with our new Board to make our club fun and informative. On behalf of the HPREC Board of Directors, I want to wish everyone **Happy Holidays!**

If you have any suggestions or feedback, contact me at [deihleen.claffey@sbcglobal.net](mailto:deihleen.claffey@sbcglobal.net).

## Jack London and Charles Schulz

By Linda Paras

Photos by Pat Fausett

Though our group was small, our enthusiasm was large as we boarded the bus on an overcast August morning for our trip north. After passing through a foggy San Francisco, we arrived at our destination and a beautiful day of sunshine.

Upon arriving at The Jack London Historic State Park, our knowledgeable docents provided an overview of Jack

London's life and the grounds. Born in 1876 in the West Oakland area, the author worked tirelessly to become a popular and prolific writer. He sailed the world traveling extensively. He wrote Call of The Wild in 1903 and The Sea Wolf in 1904, resulting in international fame.



Jack London was drawn to the Glen Ellen area for its beauty and solitude, which he felt would be the perfect setting for writing. He bought the former 'Beauty Ranch' in 1905. He continued to buy additional land and moved from Glen Ellen in 1911. The property soon became a working ranch. He was very interested in scientific farming and continued to expand and improve his new home. He rode horses exploring the canyons and rolling hills.

Our first stop was 'The House of Happy Walls'. Built between 1919 and 1926 by Charmain



London after Jack's death, the home is a remarkable treasure trove of memorabilia, reflecting his many adventures and experiences and providing a glimpse into what a diverse man he was. Upon Charmain's

death in 1955, it was stipulated that the home become a memorial to Jack's life and a museum.



We then arrived at the cottage where Jack London wrote many of his later

stories and novels. We were able to stroll through the English Garden and observe its comfortable furnishings. Regardless of his many travels, Jack was very disciplined and wrote 1,000 words a day. Between 1910 and 1916, he wrote over 50 fiction and non-fiction books, as well as numerous short stories and articles. Some have been translated into 70 languages.

The grounds hold a myriad of buildings, including several barns, winery ruins, a distillery and The Pig Palace among the eucalyptus trees. We were unable to visit the ruins of 'The Wolf House'. This was to be Jack and Charmain's dream home. Construction began in 1911, but just before they were scheduled to move in, an early morning fire completely destroyed the home. Plans to rebuild never materialized, and it stands as a stark reminder of his shattered dream.

There are hiking trails, picnic areas, a lake and plenty of interesting stories waiting to be discovered for any future visits.

For anyone interested, there is a Web site which contains a wonderful biography of the writer and specific information about the park.

After lunching on quiche, salmon, or chicken pot pies at Marie Callender's, including scrumptious pies and desserts for many of us, we arrived



Linus and Me!



at the Charles Schulz Museum. Even though this was a repeat for some of us, it is always a treat. Our docent entertained us with stories and an overview of the museum. The ever present “morphing” of Snoopy wall hanging continues to intrigue, as does the entire portrait made entirely of comic strips. No matter how many times you see this wall, it is still amazing. A new exhibit reflecting other comic strips brought back memories of Sunday newspapers of the past. The patio area was inviting with Lucy, Woodstock, the kite eating tree, the doghouse and all the snippets reminding us of just why we still enjoy the ‘classic’ comic strip. Some free time allowed a short visit to the ice rink and the gift shop.



All too soon the time to depart arrived, and we relaxed for the ride home with our cookie treats. Passing through the San Francisco region, we again encountered fog, like returning through the “porthole” before enjoying sunshine on the southern side. We arrived home after a fun-filled day, looking forward to our next adventure.

## A September Saturday in Sebastopol

By The HPREC Travel Committee

On an early Saturday morning, 37 cheerful HPREC adventurers boarded a bus in Cupertino to head to Sebastopol to visit three new venues. While the day started with a bit of fog, the blue skies opened up, and we had a wonderful drive across the Golden Gate Bridge.

First stop was the Sturgeon Mill, a steam mill that ceased operation in the 1960’s, and is now being restored to its original glory days. The mill is open



for public tours/visits just six times a year, usually a weekend in August, September, and

October. It is operated completely by volunteers, and they actually are cutting lumber. Our guide led us through all the phases of running a saw mill and demonstrated all the equipment required to turn out truly beautiful redwood planks. There were



blacksmiths at work as well--sharpening the original saw blades and keeping the lines cutting. The noise was quite deafening when the blades were slicing the big logs, and the scent of freshly cut lumber permeated the warm September day. There were several wagons that were being filled with sawdust from the cutting operation...just tempting some six year old boy to jump into the pile.



A truly stunning pair of Shire horses were demonstrating how the culled

logs were moved around the mill, reminiscent of the Budweiser Clydesdale horses pulling beer wagons. These horses are huge, with feet the size of dinner plates. The men who were “exercising” the horses appeared to be having a blast, parading about the mill grounds behind these beautiful creatures. The time spent at Sturgeon’s was truly special for all of us.

We hopped on the bus and headed to the Henweigh Café...as in “how much does a hen weigh?” What was so very special about this food venue was the fact that it is owned and operated by a former HP salesman from the Boston area, Dennis Kelly. The sandwiches were wonderful, but the real gem was the homemade potato chips! Another plus was the fact that Dennis’ café is right next door to Mom’s Pies, a sensational pie store. Our bus driver bought \$75 worth of pies to take home, and many of us followed his lead, but only bought a pie or two. Needless to say, our travel crew certainly knows how to enjoy good food!

Our last stop was at California Carnivores Nursery, and the name said it all. The owner, Peter, gave us a



one-hour tour of the place and shared with us his childhood desire to grow these exotic plants in New Jersey. It was fascinating to see so many blue

plastic children’s swimming pools filled with growing plants in the hot house. And the variety of insect-eating plants was both amazing and colorful. The best known carnivorous plant is the Venus Fly



Trap, and Peter had many examples to show us. There even was a mock-up of the plant from the movie “Little Shop of Horrors”, human arms sticking out and all! While we could have bought a plant to take home, we all decided it would be too difficult to keep any plant at the right temperature during our return trip to Cupertino.

As we headed back to Cupertino, the usual treat of cookies and water was dispensed to the weary group. It was a fun day, and a chance to relax and nap was most welcomed. Once again, HPREC had successfully concluded another fun adventure in Northern California.

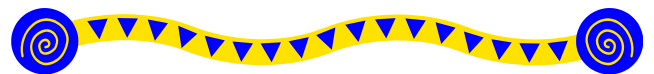


**To change your address or phone number contact:**

**John Weidert, Membership Chair**

**[john\\_weidert@scualum.com](mailto:john_weidert@scualum.com)**

**Thanks.**





## **Fall Creek**

By Jim Holl (leader) w/photo by John McCabe

Ten hikers started by visiting Cowell Redwoods State Park in Felton. Our visit to the park featured a Roaring Camp Steam Train that pulled into the station next door and took on passengers.

The group then moved across Felton to the Fall Creek parking lot. Fall Creek is clear water that runs year round over a granite creek bed. It was a joy to walk along a running creek in September. The group's route from the Fall Creek parking lot was to the Bennett Creek Trail up Fall Creek Trail to the Barrel Mill site and then back via Fall Creek Trail to Cape Horn Trail to the Blue Cliff Quarry and Lime Kilns to South Fork Trail to Fall Creek Trail to Bennett Creek Trail.



*(Left to Right) John Trone, Klaus Model, Blenda Mariani, Marcia Adams, Barbara Trone, Pat Wilcox, Stan McCarthy, Janis Andrews, and Jim Holl.*

The group is standing on the bridge over South Fall Creek where it flows into Fall Creek. A hearty welcome was given to newcomers John and Barbara Trone.

Very little wildlife was visible, but we did see two banana slugs.

The group had lunch at the site of a barrel mill. The barrels were used to ship lime. On the return trip, the group viewed the Blue Cliff Limestone Quarry and three limestone kilns.

To get there, take Highway 17 South to Mt. Herman Road (exit 3) west for 3.5 miles to Graham Hill Road, right for 0.2 miles to the next stop light (Highway 9), proceed across Highway 9 to Felton Empire Road, 0.7 miles brings you to the Fall Creek parking lot on the right. Note that there are no restroom facilities within the Fall Creek property.

## **Fremont Older OSP**

***Not so hot (the weather, not the park...)***

By Gary Ruppel with co-leader Jim Holl. Photo by Janis Andrews

On an October day when the temperature was to be in the low 90's, this short (3.4 miles) hike turned out to be just fine in spite of the heat. Taking the Cora Older and Hayfield Trails to the summit of Hunter's Point was an easy ascent. Once on top, the group was welcomed by not only one of the best views of the valley but also a nice breeze to boot.

The ten hikers then proceeded to the Seven Springs Trail and on to the historic "Woodhills" home. The house was built in 1914 and purchased by the MROS District in 1975. It has been restored to near-original design and is listed on the [National Register of Historic Places](#). The house is leased as a private residence and is open to the public only during annually scheduled docent-led tours in the spring.



*(L-R) John McCabe, Chris Simonson, Jim Holl, Jade Simonson, Alice Tracy, Gary Ruppel, Chuck Sieloff, John Kwan, and Janis Andrews*

The property is named for a prominent San Francisco newspaper editor who, along with his wife Cora, lived on a portion of the property for some 60 years.

**Getting there:** The preserve entrance is on Prospect Road in Cupertino. Exit Highway 85 at De Anza Boulevard. (From northbound 85 turn left on De Anza Blvd. and from southbound 85 turn right on De Anza Blvd.) Travel on De Anza Blvd. (toward the mountains) about 0.5 miles. Turn right on Prospect Rd. At the first stop sign, turn left and cross the railroad tracks to remain on Prospect Rd. Follow Prospect Rd. for 1.3 miles, turn left after the Saratoga Country Club, until the preserve parking lot is reached.



## RETIREE VOLUNTEERS

1501 Page Mill Road m/s1217  
Palo Alto, CA 94304  
(650) 857-2410

[hp.agilent.volunteers@hotmail.com](mailto:hp.agilent.volunteers@hotmail.com)

### Volunteering at Second Harvest

By Marialis Seehorn



Left to right: Janet Junger, Marialis Seehorn, Cherie Baker, Karl Leal, Ana Clark, and Kay Snyder

If I never see another carrot – it may be too soon! Six HPARV volunteers showed up at the Second Harvest site in San Jose on a October morning to help out. For the next two hours we sorted and boxed carrots (all shapes and sizes) donated by a local grower. (Didn't Gary Ruppel and a bunch of other volunteers do this once before at the San Mateo Second Harvest?)



We had fun! The original packaging box was almost as tall as we were and five feet across. We found carrots that looked like teeth, Woody Woodpecker, nebbishes, etc. – even some people with whom we used to work.

And as soon as we finished with the first box another one magically appeared!

Some of the nice things about volunteering are that you have the opportunity to meet some new friends, do some catching up, and remember some of happenings that occurred while we were employed. One funny story that came out concerned a delicious piece of pie carefully wrapped and mailed from Corporate Personnel to Santa Clara through the HP Mail system to a fellow by the name of Stan. (Last name withheld by request!)



(I could have sworn I saw a couple of rabbits here earlier!)

Second Harvest always welcomes volunteers! You can help out as an individual or with a group. It's a great way to make a difference in your community. (Donations welcomed as well!) Check their Web site at [www.shfb.org](http://www.shfb.org) or give them a call at (408) 266-8866, x247.

### Volunteer Opportunities?

We're already setting up our **2011 Activities Calendar**, and we're looking for some new volunteer projects in the local communities that can be completed in a few hours by a team of 10-20 persons. If you know of an opportunity, please give us a call (650 857-2410) or send us an e-mail ([hp.agilent.volunteers@hotmail.com](mailto:hp.agilent.volunteers@hotmail.com)).

### Reminders:

- Please send us your **volunteer hours** for the fourth quarter (August – October), noting the name of the organization, hours volunteered (including travel and prep time). See above for our contact information.
- **Family Giving Tree Holiday Event:** See flyer for location, time, and sign-up information.

# CATCHING UP

– *Where are you now?*

## Fred Andersen

Born on September 8, 1915, in Kiel, Germany, Fred immigrated to Long Island, N.Y., with his family at age 12, unable to speak a word of English. He picked it up quickly in public school, and by 1939 he had a



degree from Syracuse University. Before a career in accounting and business, there were four years in the Army with the Corps of Engineers, building and repairing bridges in North Africa, Italy and France. After the war, Fred spent most of his career at Hewlett-Packard in Palo Alto, retiring as Assistant Treasurer in 1978. He and Ruth, his wife, launched a travel agency and saw more of the world.

These days, Fred keeps himself busy by canning bread and butter pickles, and strawberry jam – both winning awards at last year's Orange County Fair. He takes a couple of 1-mile walks each day with his dog Suzy and then spends his 'free time' painting seascapes.

Fred's daughter, Barbara, says "My dad is a man of many talents...is in great shape and has a real zest for life!"

## Enrique Setaro

Enrique, who now lives in Florida, retired from Agilent in 2003, as the Regional TMO Channel Development Manager. While he spends some of his time doing consulting, he really enjoys managing his stamp collection, attending the meetings of two stamp clubs and editing the clubs' newsletters. He also manages two rental properties.

Enrique keeps in contact with his HP and Agilent colleagues by mail, Facebook and LinkedIn. He plans to attend the annual meeting of the "former HP Posada" in Mexico!

## Byron Anderson

Seems like only yesterday when I retired (definition: retired...new tires for the fun part of your life) in 2004.

My wife, Lynda, who seems to be a full time volunteer and my kids, Katie who works and teaches knitting in Campbell, and Luke who works in a winery near Healdsburg, all seem to have survived my transition to retirement. I've completed some long awaited projects: built a small stone winery building and a wood fired oven at our home in Saratoga, remodeled our little lake cabin on the Idaho Panhandle, and got hooked on watercolor painting. I've also had a chance to polish my "MBWA" skills as a volunteer in Guest/Patient Services at the Palo Alto VA Hospital.

One of my book club friends (it started in 1970 when some of us came to CA and still is going on today) and I hiked nearly 300 miles of the eventual 425

mile Bay Area Ridge Trail last year. The views were absolutely fantastic, a new perspective on where we live.



This year we are doing the peaks: Mt. Tam, Mt. Hamilton, Mt. Diablo, St. Helena... I continue to travel, just not to customers or business meetings! The past couple of years we've visited both Ecuador and Peru. It's quite startling to be on horseback above 11,000' and have a condor the size of a Piper Cub buzz you. Of course, fishing for piranhas in the Amazon, climbing the Inca ruins and seeing why Darwin was so taken by the Galapagos, are all fantastic and (if possible) should be on your "bucket list."

Another stop to put on the list is the International Komodo Dragon Reserve in Indonesia if you are up for an up close and personal horror experience!

Traveling is great, but it doesn't hold a candle to hearing from and getting reconnected with former colleagues. We are lucky to be able to enjoy all the communications technologies we all worked so hard to make possible.

Best to each of you in the fun years ahead,

Byron



# Members! Win a \$50 Gift Certificate!

Our Bay Area HPREC has just completed a successful year of efforts to increase Club membership. The campaign went well enough that we plan to offer it again in 2011.

**Here's where YOU come in!** There is a high probability that each of you knows at least one other eligible person who could join our Club. The benefits are many, and the cost is very low (currently \$10 annually). Remember, eligibility to join requires only a minimum of 10 years with HP and/or Agilent, and members can live anywhere. (We have members in 33 states and two countries.) If they are just short of the 10-year minimum, they can apply to the HPREC Board for membership consideration.



**A helpful tool!** To help all of us in our recruiting efforts, please refer to an **INFORMATIVE BROCHURE**, highlighting the key activities and benefits that come along with being a member of HPREC. This brochure is available on the [www.hp.com/retiree](http://www.hp.com/retiree) Web site. Click on Retiree Clubs, then Bay Area, then click "Yes". Once on the HPREC home page, click the item "HPREC Brochure" under Join the Club to access the tri-fold brochure. If you have a color printer, please print out some copies and give them to your HP or Agilent retiree friends. Or, if you would like hardcopies sent to you, send an e-mail to our HPREC Membership Chair **John Weidert** at: [john\\_weidert@scualum.com](mailto:john_weidert@scualum.com).

**The Reward!** To encourage participation, HPREC will offer **TWO \$50.00 GIFT CERTIFICATES** to be awarded at the HPREC Holiday Luncheon on December 13 for those who participated during FY2009-10. Come to the Holiday Lunch to see who wins!

**Here's how to qualify for the drawing!** Each person you encourage to join HPREC (with dues paid) will put your name in the drawing pool. Bring in more than one member, and you will have your name added to the pool an additional time. Bring in three new paid members and get three chances to win! There is no limit to how many paid members you can bring in and increase your chances of winning a certificate. We encourage entrants to attend the luncheon, but you are not required to be present to win.



**Campaign timeframe!** All entries from November 1, 2009 to October 31, 2010 (our fiscal year), are eligible. New members should write your name on their enrollment form for you to qualify. (If you have already referred new members who have joined and paid this year, just let John Weidert know.) All members of the club are eligible to win (except the membership chair). One winning certificate per member.

**So, let's go on a recruiting binge and increase our membership level! You will be doing the new member and the Club a real favor.**



If you have questions or comments, please send an e-mail to **John Weidert** at: [john\\_weidert@scualum.com](mailto:john_weidert@scualum.com)



# TRAVEL TALK

By The Travel Committee

Your HPREC Travel Committee has had a lot of fun putting together interesting venues for your enjoyment. While it does take a lot of time and coordination to make these trips run smoothly, we do so in the spirit of what made Hewlett-Packard and Agilent such great work environments. We will continue to plan interesting and yummy adventures for your enjoyment.

In order to help us be as efficient as possible, we would like to remind you of a couple of things that you can do to assist us. Please keep in mind that this committee is a volunteer group, and all members do have other obligations in their daily routines. Thus the reason we have to identify and support the guidelines we have set forth in previous Travel Talk articles.

The following notes are reminders of some of these guidelines:

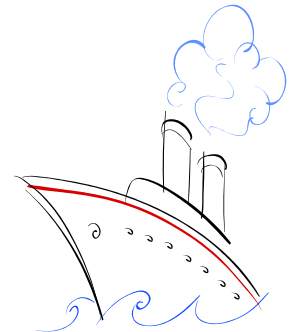
- 1> It is imperative that your trip reservation form, which is on the trip flier, be totally filled out and complete. We have started sending back incomplete forms, which releases your place in the queue. We will not be calling you if information is not there.
- 2> PLEASE PRINT CLEARLY your e-mail address on the reservation form. Our committee members spend a lot of time trying to decipher what you have written. If we cannot read the address, you may not get a confirmation memo and/or trip instructions. Do feel free to use those pre-printed return address labels you may have.
- 3> The Cancellation Policy, for people who “forget” or do not show up for a trip for which they have reserved a place and paid, is very clear....NO REFUND. We have contracts with the bus company, restaurants, and tour venues that require outlay of monies before a trip is undertaken, and we have priced the trip for members based on a certain number of HPREC participants. We also send out reminders, via e-mail, so that members are able to manage their own travel/trip plans.
- 4> We do NOT call people with trip confirmations and/or reminders. If you do not have an e-mail address, you must include a stamped/self-addressed envelope with your reservation, and we will use that envelope as a vehicle to send you a confirmation. If you fail to do that, we cannot honor your reservation, and we will mail back your entire reservation.

5> The parking situation for trips is as follows:

**DAY TRIPS:** We can still park our cars on the HP Cupertino campus. We park close to the “inside corner” of N. Wolfe Road and Pruneridge Avenue. When HP finally closes that campus, we will have to find a different place...but this may not happen for a year or two.



**LONG TERM TRIPS:** We can no longer leave cars overnight on HP or Agilent property, so participants need to arrange their own transportation to and from the bus meeting site on the Cupertino campus. This applies to cruises and multi-day trips that we take, such as the upcoming 3-day adventure to Yosemite in April of 2011.



Thank you for helping us to provide you a fun trip. As usual, if you have any questions regarding these guidelines, you are always welcome to contact a member of the Committee. And a big thank you to those members that send us lovely thank you notes after a trip. It means a lot to your Travel Committee!

## Homer's Place

By Homer Wong, Board Member and your HP Liaison

As the chairman of the Nominating Committee, it is also my pleasure to report the results of this year's elections.

All four of our incumbents; Harold Kaye, Herb Knoesel, Marialis Seehorn and Phil Smith were re-elected to serve another term on the Board. We are also happy to welcome Paula Hoelker-williams to her first term on the Board.

All the different activities and events would not be possible without the dedicated service of all our Board members.

We encourage everyone in the Club to pitch in and help out; we're always looking for help.

# Carol's Corner

By Carol Nakamoto, HPREC Web Communicator

## HP-related Retiree Web sites

...for HP and Agilent retirees

You will find topics in a different order this time, starting with **Latest Info** and ending with **Basics**. For the new club member who has never read this article, you might want to start in the **Basics** section. This is where you will also find all of the *password* information you need.



## LATEST INFO

This information is updated every newsletter issue.

### [www.hp.com/retiree](http://www.hp.com/retiree)

When navigating from HP's retiree home page to get to our HPREC Web site (by clicking on Retiree Clubs, then clicking on Bay Area), you will now see a new page that was added by HP IT to inform you that you are leaving an HP controlled Web site and entering a Web site hosted by your Club. This was the result of an overall audit they did for URLs that include any reference to HP.

As of the Editor's deadline, some of the wording was being clarified, but bottom line, just click YES, and you will get to our Club's home page at [www.hpretirees.com/hprec](http://www.hpretirees.com/hprec). You may wish to bookmark both Web sites.

Also, watch the retiree home page for a link with the replay Webcast, as well as a posted script of the Annual Retiree Briefing that was held October 28, 2010.

### [www.bayarea.hpway.org](http://www.bayarea.hpway.org)

*(Username and password are in the Basics section of this article.)*

Check out the Web site for the November/

December Employee Programs newsletter that will include some new offerings. Here's a sample of what's available now:

### \*Passport Lifestyle Card

Passport cards (2-for-1 dinners, etc.) are available for purchase for \$50 (\$130 value) at [www.hp.passportlifestyle.com](http://www.hp.passportlifestyle.com). See the *Basics* section for the HP code.

*Note: To help maintain good relations between members and participating restaurants, Passport has added a NEW GRATUITY FEATURE. Restaurants participating in this new feature will automatically calculate your gratuity as 18% and include it on your bill at the end of your discounted meal.*

*You can identify those restaurants participating in this new feature by looking for a new ICON on their Web site (white check mark with an 18% gratuity reference).*

*For those restaurants leaving it up to us, let's remember to provide an appropriate tip on the amount before the discount is given, so that the server is properly compensated. This will help keep good restaurants in the program.*

The **HP Store** sells discounted tickets to employees and HP/Agilent retirees. It is located at 19091 Pruneridge Ave., Lobby 44/46 (left side of Bldg. 46) on the HP Cupertino Site. Phone (408) 447-4119  
Hours: Wednesday through Friday from 11:30 a.m.-1:30 p.m., except HP holidays.

Here's a sample of discounted offerings; *some make good stocking stuffers:*

- \* AMC & Cinemark theater tickets
- \* California Academy of Sciences
- \* Disneyland/Six Flags/Universal Studios
- \* Pier 39 fun pack
- \* Roaring Camp Railroad
- \* Winchester Mystery House
- \* See's candy – 1-lb box
- \* Monterey Bay Aquarium (online only)
- \* **deYoung Museum – S.F.**  
Sep 25-Jan 18, 2011 to see Van Gogh, Cezanne, Gauguin and Beyond – 20% off ticket.
- \* **Radio City Christmas Spectacular starring the Rockettes @ HP Pavilion, San Jose**  
Dec 18-19 - \$30-57.50 – no Ticketmaster fees.

# BASICS

If you are a new Club member, we invite you to read this AND visit our Club's Web site at:

[www.hpretirees.com/hprec](http://www.hpretirees.com/hprec). Click on a recently added link called **Web site Orientation** directly under MEMBER ACTIVITIES AND RESOURCES.

This provides an overview of how to navigate our Club's Web site to see our activities, ways to volunteer either with the Club or the community, and stay connected via e-mail.

Our home page also includes a recently added link called **Travel Tips** for those interested in day trips or overnight excursions.

There's more information on the Web site Orientation page about these retiree Web sites below, including how to order HP logo merchandise, catch up on HP News, find vendor and event discounts, and sign up to receive retiree-related information directly from HP Retiree Programs.

[www.hp.com/retiree](http://www.hp.com/retiree) is HP's home page for all retiree-related information. It is for both HP and Agilent retirees. Bookmark it, as all of the other Web sites can be found from this one-stop-shopping site.

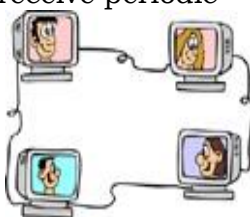
[www.bayarea.hpway.org](http://www.bayarea.hpway.org) is the Bay Area Employee Programs (discounts). See a sample of offerings in the **Latest Info** section.

[www.hpalumni.org](http://www.hpalumni.org) is an independently hosted Web site. The HP Alumni Association operates online discussion forums for former HP and Agilent employees and retirees, and is a vast resource of information.

## Stay Connected via E-mail

(includes way to get online notification that newsletter is posted to Club Web site)

For HP and Agilent retirees to receive periodic e-mails from organizations that fit your interests, you have **three** places to sign up: HPREC, HP, and HPAA. For privacy reasons, these cannot be shared.



## User names and passwords

to the secure areas of the different retiree Web sites are:



**HP (News) and Bay Area Employee Programs (Discounts):**

User name: \*\*\*\*\* Password: \*\*\*\*\*

**HPREC (online e-mail directory):**

User name: \*\*\*\*\* Password: \*\*\*\*\*

**Passport Card:**

HP Code: \*\*\*\*\*

**HP Branded Gear:**

HP Password: \*\*\*\*\*

*Note: If you are reading the newsletter online and you cannot see the user names and passwords, we have deleted them for security reasons.*

*For this information, refer to our bi-monthly e-mail from [hprec-bayarea@hpretirees.com](mailto:hprec-bayarea@hpretirees.com), notifying you that the latest newsletter is online.*

## NOT receiving online newsletter notification?

*To sign up, go to our HPREC home page, scroll to Retiree e-mail List:*

- 1) If you never added your e-mail address to our secure online directory, **CLICK ON** "Add your e-mail address"; when done, select your preferred member options.*
- 2) If you previously added your e-mail address, **CLICK ON** "Change existing e-mail address and/or select HPREC Member Options." Make sure you've chosen "elect to receive an e-mail notification when your bi-monthly newsletter is posted to the Club Web site." Review the other available member options to ensure your preferences are carried out. Use password information under HPREC above. We do not send the newsletter as an attachment.*

*If you prefer to not opt-in to your Club's online e-mail directory, you can obtain the password information by visiting the HP Retiree home page and clicking on the "Forget your password?" link. HP will e-mail you after verifying your HP retiree status.*



# Sympathy

by **Herb Knoesel**

HPREC member **Denis W. Mcmenamy**, 76, passed away on December 17, 2009. He started very young with HP in the Bay Area, and when he retired, he moved to Oregon to become a forester with the BLM. Denis is survived by his second wife, Dorothy, and five daughters. *(Submitted by Dorothy Mcmenamy)*

HPREC member **Robert Sisney**, 84, passed away on April 9, 2010. He worked for many years in Palo Alto as a System Analyst. Bob leaves behind his wife of 46 years, Lisbeth, and three children. *(Submitted by Lisbeth Sisney)*

Husband of HPREC member Anna Garcia, **Gilbert Garcia**, 76, passed away August 18, 2010. He is survived by his loving and devoted wife of 54 years, Anna. He will be deeply missed by his children Gwen Hastings (Jerry), Jay Garcia (Kathryn), Pamela Oak (Brian), and grandchildren Jason, Ryan, Elise, Veronica, Laura, Brandon, Michael and Jennifer. *(San Jose Mercury News)*

**Harold (Hal) Davis**, 64, passed away on August 22, 2010. He worked at HP for 26 years. He is survived by his wife, Mildred Bryson-Davis; children Mike Davis, Tracy Wiesner, Melissa Broadwell and Felice Santana; grandchildren Krisana Salas, Alexander and Marcus Santana, Matthew and Caitlin Wiesner, Bennyell Broadwell, and brother Dennis Davis. *(Submitted by Mildred Bryson-Davis)*

**Patty Stumpf**, 62, passed away on August 26, 2010. She owned three of her own businesses over the years, and among her many business accomplishments, Patty worked as a Project Manager for IBM, HP, and *Psychology Today*. Patty is survived by her husband of 42 years, Vaughn Stumpf, and an extended family. *(Santa Cruz Sentinel)*

Husband of HPREC member Patty Hendrickson, **Ronald Hendrickson**, 78, passed away on August

26, 2010. He also worked at HP for 35 years. An avid jazz fan, he spent much time playing with a trio at Palo Alto High, had his own radio program, taught jazz appreciation classes, played the piano, and sang in clubs around the Bay Area. Ron is survived by his wife for 32 years, Patty; his brother Gary; Auntie Zee; daughters Liz, Susan, and Cathy; and son Michael. Stepchildren include Nancy, Linda, Jim, Debbie, and Amie. He had many grandchildren and great-grandchildren. *(Submitted by Patty Hendrickson)*

HPREC member **Edward J. Pool**, 74, passed away peacefully on September 5, 2010 in his home in Santa Clara. He worked for over 25 years at HP and Agilent. Ed is survived by his wife Evelyn of 50 years, son Edward Jr. (wife Julie), daughters Sheila Coli (husband James), and Cheryl Zirbel (husband Eric); grandchildren Nicholas, Nathan, Zachary and Isabelle; brother Wallace, sister Lois Staley, sister-in-law Nannette; uncle Walter (wife Lillian) of Ewa Beach, HI and many nieces, nephews, and cousins. *(San Jose Mercury News)*

**Steven Richard Berger**, 55, passed away on September 12, 2010. He worked for HP and Agilent for 26 years. Steve is survived by his wife, Sarah (Beckett) Berger, two sons, Brett (16) and Brian (13), his mother, Nancy Berger, brother, David Berger, sister, Susan Mann, three uncles; James, Richard and Thomas Simmons, and eleven cousins. *(Sacramento Bee)*

HPREC member **Giovanna Rosso**, 71, died on September 23, 2010. She was born in Italy on Oct. 9, 1938. She came to the U.S. as a young woman and worked at HP for many years. She then joined her cousin in property management in the Bay Area. Giovanna is survived by several cousins in Italy. Proud "Zia" to Vittorio, Domenico, Marisa, Rosa, Emilia, Harry, Sabrina, Annalisa, Teresa, and Francesca Sambuceto. Dear friend and colleague to John Souerbry. Giovanna also enjoyed great times and travels to many ICF functions with her dear friend Eva Stern. *(San Jose Mercury News)*

**James R. Collin**, 71, passed away on October 2, 2010. He worked at HP for 35 years, where he was the engineering manager for Precision Frequency Sources (PFS). He aligned laser interferometry, quartz crystal and cesium beam technologies to

form a manufacturing group called Precision Components Manufacturing (PCM). Jim leaves behind his loving wife of 3.5 years, Andrea Collin, four daughters, Cary Vierra (Tim), Laura Morin (Gary), Kelly Collin, and Jenn Byrd (Kenny), four grandsons, and four great granddaughters. (*San Jose Mercury News*)

HPREC member **Paul Tuttle**, 66, passed away peacefully on October 5, 2010. Born in San Francisco, he was raised in Barron Park, Palo Alto. He joined the Air Force after Cubberley High School. Then after he tried a few companies, he retired in 1991 from Smith Kline Instrument/HP after working there for 28 years. His mother taught classical music, and Paul went along with her to the opera and symphony from a young age. Wine making was also his passion. He had his own label 'Carriage House Cellars'. His survivors are his beloved wife, Yuki; brother, Kelly Tuttle; sister-in-law, Marianna Tuttle. (*San Jose Mercury News*)

HPREC member **Yasuo (Yas) Shimoguchi**, 85, passed away on October 16, 2010. Yas was a 39-year veteran of HP and the first Japanese American hired by the company. He was a true believer in the HP Way and was known to say "I'd do anything for HP." Yas was a HPREC Board member for 12 years, and was instrumental in creating a relationship with YHP retirees. He planned two trips for HPREC to Japan and a return visit of YHP retirees to Palo Alto. His hobby was golf and he was an avid fan of the 49ers and the SF Giants. Yas is survived by his wife May, daughter Jean, son-in-law Denny Takahashi, brother Sam Shimoguchi and his wife Kuni, sister-in-law Yoneko Morishita, brother-in-law Moffet Ishikawa, and several nieces and nephews. (*San Jose Mercury News, Don Higgins*)

HPREC member **Floyd Moorhead**, 72, passed away peacefully on October 17, 2010 in Apache Junction, AZ. He worked for 30 plus years as a welder for HP, which included the Dymec Division and HP Labs where he retired in 1999. Floyd is survived by his wife of 49 years, Annette, daughters Susan McNern of Mountain View, Jamie Moorhead of Emmett, ID and son Michael Moorhead of St. Paul, MN. He is also survived by his sister Joann Valentine of Mesa, AZ, son-in-law Phillip McNern

of Mountain View and four grandchildren.  
(Submitted by Annette Moorhead)

**Wilfred (Bud) Kincaid**, 80, died October 18, 2010. He worked for 20 years in Palo Alto in the tool shop and the gage lab. He is survived by his wife Patricia of 58 years, daughters Linda and Valerie, and 7 grandchildren. (*San Jose Mercury News, Bob Kirkpatrick*)

---

**To place a notice**, please write to Herbert Knoesel, 633 Phil Court, Cupertino, CA 95014 or e-mail to: [hp-rec@knoesel.com](mailto:hp-rec@knoesel.com).

**Rosemary Bradford Hewlett**, the second wife of late HP founder Bill Hewlett, passed away on 29 October, 2010. Rosemary and Bill loved the outdoors and met on a ski vacation. At the time, they were both widowed and each had five children. They married on 24 May, 1978.

Rosemary played an active role in Bill's public life and in the history of HP. She regularly attended company events and was a true partner to Bill in helping create a rich family environment for HP employees. As recently as 2001, Rosemary made a surprise appearance in Boise at a performance of the all-HP Jazz band Boise Straight Ahead.

Standing up from her third row seat, she declared, "I'm Mrs. Hewlett. And I want you to know that if Bill were alive today, he'd be very proud of you all."

Rosemary was also well known for her philanthropy and efforts to give back to her community, including support of her alma mater, Smith College, where she supported the establishment of the nation's first engineering program at a women's college.

Born in 1919, Rosemary leaves a long legacy of contribution and accomplishment. That legacy will live on through her generosity of spirit, the love of her family and friends, and her many philanthropic endeavors.

## **HPREC Monthly Activities**

By Pat Musachia



### **Golf** By Phil Smith

The weather at Spring Valley was close to perfect on September 16. We had 16 players enjoy this fun and putt challenging course. The winners for Spring Valley were:

<b>Men's Flight</b>	Bill Smith	net 65
<b>Low Putts</b>	Joe Spinozzi	29
<b>Women's Flight</b>	Pat Hanson	net 64
	Carol Surrell	net 64
<b>Low Putts</b>	Pat Hanson	33
<b>Closest-to-Pin</b>	Mike Carveiro	Hole #2
	Marcia Lubecki	Hole #4
	Avy Nielsen	Hole #7
	Shelia Highe	Hole #11
	Carol Surrell	Hole #16

We had 19 tough players disregarding the heat to play in the last tournament of the year at Los Lagos on October 14. Of the 17 players who finished, the winners were:

<b>Men's Flight</b>	Paul Romeo	net 63
<b>Low Putts</b>	Ray Spoelman	33
<b>Women's Flight</b>	Bev Murphy	net 75
<b>Low Putts</b>	Pat Hanson	31
<b>Closest-to-Pin</b>	Bev Murphy	Hole #2
	Bill Morimoto	Hole #8
	Navin Shankar	Hole #12
	Ken Newton	Hole #16

The 2010 Golf Season passed way too quickly! We had eight great outings at four courses – Santa Clara, Sunnyvale, Spring Valley and Los Lagos. We'll do it again next year, assuming we have enough players interested in keeping it going. We definitely need new players and more regular players to make it worthwhile. So, if you're a golfer, we want you to play next year, regardless of skill level. The handicap system will level the playing field and give all a chance at the coveted prizes. See you next March! If interested, contact Phil Smith at [smithphil06@gmail.com](mailto:smithphil06@gmail.com).

Law #18 of golf: The last three holes of a round will automatically adjust your score to what it really should be.

### **Tours of the HP Garage**

Look for the flyer (page 18) in this newsletter about a new opportunity to visit true HP history. The third Thursday of most months offers a free one-hour tour.



### **Bowling for fun!** By Carol Nakamoto

The next few bowling events are **December 13, January 10 and February 14 at Palo Alto Bowl from 3:00-4:30.** It's always the 2<sup>nd</sup> Monday of each month. Price is \$5.00 per person for 2 games (includes shoe rental). If interested; contact Carol Nakamoto at [carol\\_nakamoto@hotmail.com](mailto:carol_nakamoto@hotmail.com) or (650) 941-3678. All skill levels welcome.



### **Social Bridge Group**

**When:** The first and third Tuesdays of each month, December 7 and 21 and January 4 and 18 at 1:00 p.m.

**Place:** Classic Residence by Hyatt – across from the Stanford Shopping Center at 620 Sand Hill Road, Palo Alto in the Sausalito Room, second floor. Please join us!

**Contact:** Elizabeth Kan (650) 854-4052

### **December/January Hiking Schedule**

By Gary Ruppel

**Date:** Tuesday, December 14  
**Rainout Date:** Tuesday, December 21

**Hike Leader:** John McCabe (650) 328-3472

**Hike Location:** North end of the Sawyer Camp Trail along the Crystal Springs Reservoir. The hike will be about seven miles and is relatively flat.

**Meet at:** Meet at the 280 & Page Mill Road Park-&-Ride at 10:00 a.m. to carpool. Bring water, lunch and \$2 to reimburse carpool drivers. To reach the trailhead going north on 390, take the Millbrae Avenue exit and continue on Skyline Boulevard to Larkspur Drive. Go left on Larkspur, cross under 280 and park at the trailhead.

**Date:** Tuesday, January 11  
**Rainout Date:** Tuesday, January 18

**Hike Leader:** Jade and Chris Simonson (650) 969-3450

**Hike Location:** Monte Bello Open Space Preserve. We will use the south facing (warm) trails to reach





the fabulous views from Black Mountain. These trails are often dry and are a joy to use during the winter. The views from Black Mountain are over the Hanson Cement Property to Silicon Valley. Elevation gain is about 600 feet.

**Meet at:** The 280 and Page Mill Road Park-&-Ride, at 10:00 a.m. to carpool. To reach the Monte Bello Open Space Preserve, take Page Mill Road west from 280 for seven miles. The parking lot is on the left across from the Los Trancos Open Space Preserve parking lot. Bring \$1 each to reimburse carpool drivers along with water and lunch.

## **AGILENT RETIREES –**

### **Sign up for e-mail news from HP**

By John Weidert, your Agilent Liaison

Hewlett Packard has made available an e-mail signup list for retirees from HP and Agilent Technologies who want to stay informed on a variety of subjects from HP. Information includes Employee Purchase notices, volunteer activities, and retiree communications, including notification of the annual HP CEO briefing that Agilent retirees can participate in.



To sign up, go to: [www.hp.com/retiree](http://www.hp.com/retiree). Look for the label, "Get Involved" and click on "Join HP's retiree email list".

In the drop down menu box, you will be asked for a user name and password:  
Use the following:

User Name: \*\*\*\*\*

Password: \*\*\*\*\*

You will then be directed to the application page where you can fill in your information to start receiving some great information from HP about a variety of subjects.

Have fun!

## **Membership Committee needs your help!**

Hello Everyone,

I have a great volunteer opportunity to help the HPREC Membership Committee with our data entry process. I would like to have at least two volunteers helping with this so the time and work can be split up.

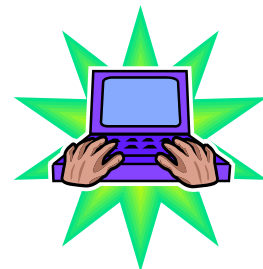
The amount of time is approximately two to four hours, once a week. This is usually on a Wednesday morning, but it can be flexible.

Responsibilities include picking up the mail at the Mountain View Post Office weekly and then going to HP Palo Alto to enter annual dues, data on new members, changes to mailing addresses, etc. into the Club's computer system.

There are documented procedures available and hands-on training will be provided by Pat Alvarado, who has so ably performed these duties over the past three years.

If you are interested, please contact John Weidert, HPREC Membership Chairman at (408) 358-7930 or [John\\_weidert@scualum.com](mailto:John_weidert@scualum.com).

Thanks,  
John





# Holiday Volunteer Project

## Help Sort Gifts for Children @ The Family Giving Tree



Share the holiday spirit by joining with other HP and Agilent retirees to help sort gifts for the Family Giving Tree. These gifts will be collected by over 900 companies and organizations (including HP and Agilent) for children in our local area who would otherwise go without gifts. This “Done-in-a-Day” project, sponsored by the HP/Agilent Retiree Volunteers organization, will only take a few hours, but will mean a lot. We always have a great time! Wear layers and comfy shoes. We are never sure what temperatures to expect, but it's usually COLD! The warehouse floor will be hard cement and chairs are limited.

**Date:** Thursday, December 16, 2010

**Time:** 9:00 a.m. to 12:00 noon

**Place:** Family Giving Tree Warehouse  
2400 Condensa St., Santa Clara CA 95051

**RSVP:** By Friday, December 3 to  
Connie D'Andrea at:  
[hparvrsvp@yahoo.com](mailto:hparvrsvp@yahoo.com) or (650) 856-9818

**More Info:** <http://www.familygivingtree.org>  
For directions, click “[WAREHOUSE](#)”  
then click [GoogleMaps Direction](#) or  
[YahooMaps Directions](#)





# HPREC ANNUAL HOLIDAY LUNCHEON

Meet and greet fellow retirees with good wishes for the holidays and New Year!  
(Includes Annual HPREC Meeting)

**COST PER PERSON:** \$28.00 if received by November 22  
\$33.00 after November 22 through December 4  
Deadline for reservations: Postmarked by December 4  
**(NO PHONE RESERVATIONS WILL BE TAKEN)**

**DATE:** Monday, December 13, 2010  
**PLACE:** Crowne Plaza Cabana Hotel  
4290 El Camino Real, Palo Alto

Note change in date



Following Lunch: Guest Speaker, Annual Briefing by Club President, Door Prizes.

**GUEST SPEAKER: GUSTAVO SALEM**  
Vice-President, General Manager,  
Biological Systems Division Life Sciences Group, Agilent Technologies

10:00 a.m.: No-host Bar outside dining area  
Dining room doors will open promptly at 11:00 a.m.

11:00 a.m.: Social Hour: No-host Bar inside the dining area

12:00 Noon: Traditional Turkey Luncheon

- Coffee, tea, water included
- Wine will be available to be ordered from the bar OR bring your own--\$10 corkage fee per bottle



**PARKING:** While there is plenty of parking, especially in the back where the ballroom is located, carpooling is encouraged when possible. Please plan to arrive early. Valet parking is available.

For additional information or questions, please contact the Event Coordinators during normal business hours of 9:00 a.m. to 5:00 p.m., Monday – Friday. Exceptions for emergencies only, please. Event Coordinators: John Weidert (408) 358-7930 or [John\\_weidert@scualum.com](mailto:John_weidert@scualum.com) or Chris Gandel (650) 521-2398 or [gandelhprec@att.net](mailto:gandelhprec@att.net) **No reservations will be taken by phone.**

-----cut here-----

EVENT: HPREC Annual Holiday \_\_\_\_\_person(s) @ \$28.00 per person by Nov. 22 = \$\_\_\_\_\_Total  
Luncheon \_\_\_\_\_person(s) @ \$33.00 per person Nov. 22 through Dec. 4 postmark = \$\_\_\_\_\_Total  
(PLEASE WRITE ONE CHECK PER EVENT)

**PLEASE PRINT NAMES:**

Member Name \_\_\_\_\_ Phone ( ) \_\_\_\_\_  
Spouse/Guest Name \_\_\_\_\_ Phone ( ) \_\_\_\_\_  
(Above, please CIRCLE if spouse or guest—is this person a member?...YES...NO)  
Emergency Contact \_\_\_\_\_ Phone ( ) \_\_\_\_\_ Member  
Emergency Contact \_\_\_\_\_ Phone ( ) \_\_\_\_\_ Guest

REMIT TO: HPREC, P.O. Box 86, Mtn. View, CA 94042-0086

Your reservation will be considered confirmed once we receive your sign-up form and check postmarked by December 4.



# A STEP BACK IN TIME!

**Tours of the HP Garage began in October of 2010 and will be conducted the 3<sup>rd</sup> Thursday of most months.**

**Tours will be limited to 10 Club Members/guests a month and you must sign up through HPREC.**

**Tours are free and start at 10:00 a.m. and last approximately one-and-a-half hours.**



**We will meet at 9:45 a.m. at HP in Palo Alto in the parking area by Bldg. 20's defunct carwash (off Hanover near the top of the hill).**

**For additional information or questions, please contact the Trip Leaders during normal business hours of 9:00 a.m. to 5:00 p.m., Monday – Friday. Exceptions for emergencies only, please. Trip Leaders: Gail Eatock (408) 446-0428 or [taichats2@att.net](mailto:taichats2@att.net) or Pat Fausett (650) 941-7063 or [pat.fausett@sbcglobal.net](mailto:pat.fausett@sbcglobal.net)**

------(cut here)-----  
**EVENT: HP Garage Tour** \_\_\_\_\_person(s)

**Please indicate your preference of dates (1=1st choice; 2=2<sup>nd</sup> choice; 3=3<sup>rd</sup> choice):**  
\_\_\_\_\_November 18, 2010 \_\_\_\_\_January 20, 2011 \_\_\_\_\_February 17, 2011

**(Next three tour dates, after February 17, will be listed in the January newsletter.)**

**PLEASE PRINT NAMES:**

Member Name \_\_\_\_\_ Phone ( ) \_\_\_\_\_  
Spouse/Guest Name \_\_\_\_\_ Phone ( ) \_\_\_\_\_  
(Please *CIRCLE* if spouse or guest—is this person a member? ...YES...NO)  
Emergency Contact \_\_\_\_\_ Phone ( ) \_\_\_\_\_ Member  
Emergency Contact \_\_\_\_\_ Phone ( ) \_\_\_\_\_ Guest

**REMIT TO: HPREC, P.O. Box 86, Mtn. View, CA 94042-0086**

**E-MAIL ADDRESS FOR TRIP CONFIRMATION \_\_\_\_\_ (Please print)**

EVENT: deYoung/Harley Goats      \_\_\_\_\_ person(s) @ \$85.00 per person by Dec. 20      = \$ \_\_\_\_\_ Total  
    \_\_\_\_\_ person(s) @ \$90.00 per person after Dec. 20 and by Jan 4      = \$ \_\_\_\_\_ Total  
    (PLEASE WRITE ONE CHECK PER EVENT)

**PLEASE PRINT NAMES:**

Member Name \_\_\_\_\_ Phone (      ) \_\_\_\_\_  
 Spouse/Guest Name \_\_\_\_\_ Phone (      ) \_\_\_\_\_  
 (Please CIRCLE if spouse or guest—is this person a member? ...YES...NO)  
 Emergency Contact \_\_\_\_\_ Phone (      ) \_\_\_\_\_ Member  
 Emergency Contact \_\_\_\_\_ Phone (      ) \_\_\_\_\_ Guest

**REMIT TO: HPREC, P.O. Box 86, Mtn. View, CA 94042-0086**

**E-MAIL ADDRESS FOR TRIP CONFIRMATION** \_\_\_\_\_ (Please print)

Choice of soup: \_\_\_\_\_ Cream of Artichoke      \_\_\_\_\_ Cream of Green Chile      \_\_\_\_\_ Vegetable  
 Choice of sandwich: \_\_\_\_\_ BLT      \_\_\_\_\_ Grilled Shrimp & Cheese      \_\_\_\_\_ Turkey      \_\_\_\_\_ Warm Sliced Pork

-----cut here-----

**VAN GOGH, GAUGUIN, CEZANNE, AND BEYOND  
 POST-IMPRESSIONIST MASTERPIECES FROM THE MUSEE d'ORSAY  
 deYoung Museum**



**Wednesday, January 12, 2011**



**\$85.00 per person if received by Dec. 20  
 \$90.00 after Dec. 20 and before cut-off date of Jan. 4  
 (Head phones \$7.00--not included in price of trip)**

**Maximum of 44 attendees**

**Leave Cupertino at 8:30 a.m. and return at approximately 5:30 p.m.**

**Activity level—MEDIUM: lots of walking**

**LUNCH – DUARTE'S TAVERN (known for their artichoke soup!)**

**Choice of Soup:** Cream of Artichoke; Cream of Green Chile; Vegetable

**Choice of Sandwich:** BLT w/Fries; Grilled Shrimp & Cheese; Turkey w/Fries; Warm Sliced Pork

**Includes:** Bread, Coffee, Tea, or Soda

**HARLEY FARMS GOAT DAIRY**

**200 alpine goats on nine acres**

**See goats being milked and taste their cheeses**

**Cheese Shop open for shopping**

**Monet Round**



**Van Goat Round**



For additional information or questions, please contact the Trip Leaders during normal business hours of 9:00 a.m. to 5:00 p.m., Monday – Friday. Exceptions for emergencies only, please. Trip Leaders: Helen Short (650) 327-1028 or [helenshort@earthlink.net](mailto:helenshort@earthlink.net) or Pat Fausett (650) 941-7063 or [pat.fausett@sbcglobal.net](mailto:pat.fausett@sbcglobal.net)

# ALL ABOARD THE RENO SNOW TRAIN

Feb. 15, 16, 17, 2011

**Registration & payment due by Jan. 15, 2011**

**Limited to 40 people**

## Price:

**\$279.00 per person, double occupancy; contact Trip Leaders for single rates**

**\$284.00 after Jan. 15 and before cut-off date of Jan. 25**

### Price includes:

- ❖ Insurance if cancel 3 days before trip (any refund will be minus bus & cancellation fees--approx. \$40)
- ❖ All seats reserved, round trip
- ❖ Snack pack served aboard train on Tuesday
- ❖ Deli lunch served on return trip on Thursday
- ❖ Two nights at Harrah's
- ❖ "Winner's Book" of valuable coupons, including discounted meals and shows
- ❖ All hotel taxes, as well as any train taxes



**Feb. 15: Depart Cupertino at 8:00 a.m.**

**Bus will take us to Emeryville to catch the 9:45 a.m. Reno Snow Train**

**Feb. 17: Return train leaves Reno at 10:30 a.m. and gets to Emeryville at 6:00 p.m.**

**Bus will return us to Cupertino at 7:30 p.m.**

**For additional information or questions, please contact the Trip Leaders during normal business hours of 9:00 a.m. to 5:00 p.m., Monday – Friday. Exceptions for emergencies only, please. Trip Leaders: Carol Arnett (408) 732-5194 or [carol\\_a94087@yahoo.com](mailto:carol_a94087@yahoo.com) or Pat Fausett (650) 941-7063 or [pat.fausett@sbcglobal.net](mailto:pat.fausett@sbcglobal.net)**

**-cut here.**

**EVENT: Reno Snow Train**    \_\_\_\_person(s) @ \$279.00 per person double occupancy by Jan. 15    = \$\_\_\_\_\_Total  
(Contact Trip Leaders for single rate)  
\_\_\_\_person(s) @ \$284.00 per person after Jan. 15 and before Jan. 25    = \$\_\_\_\_\_Total  
**(PLEASE WRITE ONE CHECK PER EVENT)**

**PLEASE PRINT NAMES:**

Member Name \_\_\_\_\_ Phone (      ) \_\_\_\_\_

Spouse/Guest Name \_\_\_\_\_ Phone (     ) \_\_\_\_\_

(Please CIRCLE if spouse or guest—is this person a member? ...YES...NO)

Emergency Contact \_\_\_\_\_ Phone (      ) \_\_\_\_\_ Member \_\_\_\_\_

Emergency Contact \_\_\_\_\_ Phone (     ) \_\_\_\_\_ Guest \_\_\_\_\_

**REMIT TO: HPREC, P.O. Box 86, Mtn. View, CA 94042-0086**

**E-MAIL ADDRESS FOR TRIP CONFIRMATION** \_\_\_\_\_ **(Please print)**



**EVENT: Pacific Orchid Expo**

\_\_\_\_\_ person(s) @ \$53.00 per person by Feb. 16 = \$ \_\_\_\_\_ Total  
\_\_\_\_\_ person(s) @ \$58.00 per person after Feb. 16 and by Feb. 25 = \$ \_\_\_\_\_ Total  
**(PLEASE WRITE ONE CHECK PER EVENT)**

**PLEASE PRINT NAMES:**

Member Name \_\_\_\_\_ Phone ( ) \_\_\_\_\_

Spouse/Guest Name \_\_\_\_\_ Phone ( ) \_\_\_\_\_

*(Please CIRCLE if spouse or guest—is this person a member? ...YES...NO)*

Emergency Contact \_\_\_\_\_ Phone ( ) \_\_\_\_\_ Member

Emergency Contact \_\_\_\_\_ Phone ( ) \_\_\_\_\_ Guest

**REMIT TO: HPREC, P.O. Box 86, Mtn. View, CA 94042-0086**

**E-MAIL ADDRESS FOR TRIP CONFIRMATION** \_\_\_\_\_ **(Please print)**

**Choice of:** \_\_\_\_\_ Penne pasta \_\_\_\_\_ Grilled Mahi Mahi \_\_\_\_\_ Roasted chicken breast

-----cut here-----

# **PACIFIC ORCHID EXPOSITION**

**(Ft. Mason Center, San Francisco)**

**Friday, March 4, 2011**

**Cost per person:**

**\$53.00 if received by Feb. 16.**

**\$58.00 after Feb. 16 and before cut-off date of Feb. 25**

**Limited to 44 people**

**Bus leaves Cupertino at 8:30 a.m. and  
returns at 4:30 p.m.**



- A feast for both the eyes and the nose with 15,000 orchids on display.
- An in-depth look at the past, present and future of orchid cultivation.
- Opportunity to purchase plants at the show.



**DEADLINE FOR SIGN-UP:**

**February 16, 2011**

**Activity level: MEDIUM – long  
periods of walking & standing**

**LUNCH: McCormick & Kuletos**

**Choice of: Penne pasta with rock shrimp & Bay Scallops Alfredo**

**Grilled Mahi Mahi with lemon butter**

**Roasted chicken breast stuffed with cheese & fresh herbs**



**FORT POINT: Free afternoon self-guided tour**

For additional information or questions, please contact the Trip Leaders during normal business hours of 9:00 a.m. to 5:00 p.m., Monday – Friday. Exceptions for emergencies only, please. Trip Leaders: Carol Arnett (408) 732-5194 or [carol\\_a94087@yahoo.com](mailto:carol_a94087@yahoo.com) or Lynda Robinson (408) 292-9299 or [robinson.lynda@att.net](mailto:robinson.lynda@att.net)



## YOSEMITE



## FORESTIERE UNDERGROUND GARDENS

**DATE: APRIL 12 – 14, 2011**

### COST PER PERSON:

\$220.00 Double Occupancy

\$305.00 Single Occupancy

Reservation & payment due  
no later than March 25.

### LIMITED TO 44 PEOPLE

### TRIP INCLUDES:

Round trip motor coach  
transportation

Two nights accommodation

- ❖ Chukchansi Gold Resort  
& Casino
- ❖ \$20 in coupons (\$10  
gaming & 2-\$5 meal) per  
person per night

Day trip to Yosemite

Lunch on April 14 (all other meals  
are on your own)

### April 12: Cupertino Site to Chukchansi

- ❖ Depart Cupertino Site at 8:30 a.m.  
(**overnight parking is NOT  
allowed**)
- ❖ Check into Chukchansi at 3:00  
p.m.—no portage provided. (Can  
gamble if we get there earlier.)
- ❖ Evening meal and gambling (on  
your own)

### April 13: Chukchansi to Yosemite Valley

- ❖ Depart Chukchansi at 9:00 a.m.
- ❖ Lunch reservations at Ahwahnee  
Hotel (on your own)
- ❖ Return for dinner at Chukchansi  
(on your own)
- ❖ Those who wish not to go to  
Yosemite can stay at Chukchansi

### April 14: Chukchansi to Cupertino Site

- ❖ Luggage out at 7:30 a.m.—no  
portage provided.
- ❖ Depart Chukchansi at 8:00  
a.m. for tour of Forestiere  
Underground Gardens
- ❖ Lunch at Santa Fe Basque  
Restaurant (included)

Choice of: Fried Chicken,  
Roast Beef, or Grilled Salmon  
(Includes Macaroni Salad and  
Ice Cream)

- ❖ Return to Cupertino at  
approximately 5:00 p.m.

For additional information or questions, please contact the Trip Leaders during normal business hours of 9:00 a.m. to 5:00 p.m., Monday – Friday. Exceptions for emergencies only, please. Trip Leaders: Don Higgins (408) 736-1918 or [donald1090@comcast.net](mailto:donald1090@comcast.net) or Pat Fausett (650) 941-7063 or [pat.fausett@sbcglobal.net](mailto:pat.fausett@sbcglobal.net)

-----cut here-----

EVENT: Chukchansi/Yosemite/ \_\_\_\_\_ person(s) @ \$220 per person double occupancy by Mar. 25 = \$ \_\_\_\_\_ Total  
Forestiere Underground Gardens \_\_\_\_\_ person(s) @ \$305 per person single occupancy by Mar. 25 = \$ \_\_\_\_\_ Total  
(PLEASE WRITE ONE CHECK PER EVENT)

### PLEASE PRINT NAMES:

Member Name \_\_\_\_\_ Phone ( ) \_\_\_\_\_

Spouse/Guest Name \_\_\_\_\_ Phone ( ) \_\_\_\_\_

(Please CIRCLE if spouse or guest—is this person a member? ...YES...NO)

Emergency Contact \_\_\_\_\_ Phone ( ) \_\_\_\_\_ Member

Emergency Contact \_\_\_\_\_ Phone ( ) \_\_\_\_\_ Guest

REMIT TO: HPREC, P.O. Box 86, Mtn. View, CA 94042-0086

E-MAIL ADDRESS FOR TRIP CONFIRMATION \_\_\_\_\_ (Please print)

Choice of: \_\_\_\_\_ Fried Chicken \_\_\_\_\_ Roast Beef \_\_\_\_\_ Grilled Salmon

## IBERIAN EXPLORER (Spain & Portugal)

May 8, 2011

16 days/14 nights

(Madrid, Segovia, Avila, Salamanca, Porto, Coimbra, Fatima, Obidos, Lisbon, Merida, Seville, Cordoba, Granada, Valencia & Barcelona)



### Tour includes:

- Transfers: airport-hotel-airport
- Accommodations in First Class hotels
- Buffet breakfast daily, 6 dinners & Flamenco
- Exclusive HP deluxe air-conditioned motor coach (if group exceeds 40)
- Group cocktail parties
- Professional bilingual tour escort throughout
- Escorted sightseeing tours with bilingual guide in Madrid, Salamanca, Porto, Lisbon, Seville, Cordoba, Granada, Barcelona and Valencia
- Evening Illuminations tour of Madrid
- Baggage handling (1 piece per person) at hotels

**Fare: \$2,775.00 (\$300.00 per person deposit, plus insurance)**

**Airfare, Taxes and Insurance to be determined**

**Price subject to possible currency variations for 2011**



---

## CRYSTAL CRUISES RETURN TO *THE LAST FRONTIER (ALASKA)*



August 1, 2011

Roundtrip sailing from San Francisco on Crystal Symphony for 12 days

**Fares: Starting at \$4,690.00 per person  
(10% deposit plus insurance)**

### Exclusive Amenities:

- 2-for-1 Fares
- \$1,200 per couple "As You Wish" Shipboard Credit
- Free Air (Credit of \$400 per person if Free Air is not used)
- 2 HPREC cocktail parties
- Crystal Society benefits for previous Crystal patrons

Contact Don Higgins at (408) 736-1918 or [donald1090@comcast.net](mailto:donald1090@comcast.net) or Estill International Travel Services, CST#1010395-10, 4546 El Camino Real, Los Altos, CA 94022, Phone (650) 948-6027, for additional trip information or to sign up for these trips.



Hewlett-Packard/Agilent  
Retired Employees Club  
P.O. Box 86  
Mountain View, CA 94042-0086

Forwarding Service Requested



**HPREC NEWS**

**Issue #73**

*Published bi-monthly*

**Editor:**

Deihleen Claffey

**Associate Editors:**

Lynn Cortes

Carol Nakamoto

Marialis Seehorn

***To submit articles:***

*HPREC\_News@yahoo.com*

***To view newsletters online:***

[www.hp.com/retiree](http://www.hp.com/retiree)

**Coming Events**

- |               |   |
|---------------|---|
| <b>Nov 18</b> | <b>HP Garage Tour, Palo Alto</b>                      |
| <b>Dec 13</b> | <b>Holiday Lunch, Palo Alto - note date change!!!</b> |
| <b>Dec 16</b> | <b>Family Giving Tree Volunteer Event</b>             |
| <b>Jan 12</b> | <b>deYoung Museum / Goat Dairy</b>                    |
| <b>Jan 20</b> | <b>HP Garage Tour, Palo Alto</b>                      |
| <b>Feb 15</b> | <b>Reno Snowtrain, 3 day trip</b>                     |
| <b>Mar 4</b>  | <b>Pacific Orchid Exposition</b>                      |